

# LAND EXCLUSIVE LISTINGS

## NOVEMBER 2019



### Fed Way Center

S 344<sup>th</sup> St & 9<sup>th</sup> Ave S  
Federal Way, WA 98003

Listing Type: **For Sale**  
Available: **Now**

Acres: **4.39 AC**  
Zoning: **CE**  
RR: **No**  
Wet: **No**  
PSF: **\$17.00**  
Price: **\$3,251,000**

Comments: **Current zoning (CE) allows a variety of uses including from flex, industrial, warehouse, business park, medical/office development across from St. Francis Hospital. Build-to-Suit for sale/lease or land sale. Two tax lots at 2.2 acres.**

**Brian Bruininks, CCIM**  
(206) 336-5324  
[bbruininks@andoverco.com](mailto:bbruininks@andoverco.com)

**Jeff Crane**  
(206) 336-5336  
[jcrane@andoverco.com](mailto:jcrane@andoverco.com)



### 7990 NE Ecology Rd

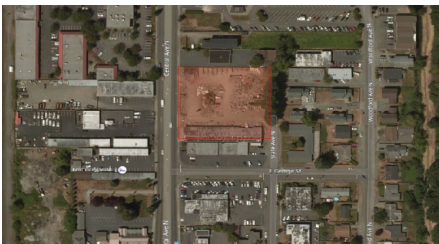
7990 NE Ecology Rd  
Kingston, WA 98346

Listing Type: **For Sale**  
Available: **Now**

Acres: **2.32 AC**  
Zoning: **REC**  
RR: **No**  
Wet: **Unknown**  
PSF: **\$4.93**  
Price: **\$498,000**

Comments: **Two buildings. 1,632 and 384 SF. Fenced and lighted.**

**Dave Dunn, CCIM**  
(206) 336-5326  
[ddunn@andoverco.com](mailto:ddunn@andoverco.com)



### Dowell Building

760 N Central Ave  
Kent, WA 98032

Listing Type: **For Lease OR Sale**  
Available: **Now**

Acres: **1.5 AC**  
Zoning: **GCMU**  
RR: **No**  
Wet: **Unknown**  
PSF: ---  
Price/Rate: ---

Comments: **8,380 SF industrial building situated on 1.5 acres of lit yard. Call broker for price/rate.**

**Dave Baumer**  
(206) 948-8779  
[dbaumer@andoverco.com](mailto:dbaumer@andoverco.com)

# LAND EXCLUSIVE LISTINGS

## NOVEMBER 2019



### Fed Way Center

S 344<sup>th</sup> St & 9<sup>th</sup> Ave S  
Federal Way, WA 98003

Listing Type: **For Sale**  
Available: **Now**

Acres: **2.2 AC**  
Zoning: **CE**  
RR: **No**  
Wet: **No**  
PSF: **\$17.00**  
Price: **\$1,434,213**

Comments: **Current zoning (CE) allows a variety of uses including from flex, industrial, warehouse, business park, medical/office development across from St. Francis Hospital. Build-to-Suit for sale/lease or land sale. Two tax lots at 2.2 acres.**

**Brian Bruininks, CCIM**  
(206) 336-5324  
[bbruininks@andoverco.com](mailto:bbruininks@andoverco.com)

**Jeff Crane**  
(206) 336-5336  
[jcrane@andoverco.com](mailto:jcrane@andoverco.com)



### Hwy 99 Opportunity Zone

13475-13545 Tukwila  
International Blvd  
Tukwila, WA 98168

Listing Type: **For Sale**  
Available: **Now**

Acres: **0.88 AC**  
Zoning: **MUO**  
RR: **No**  
Wet: **No**  
PSF: **\$25.64**  
Price: **\$985,000**

Comments: **38,418 SF (0.88 AC, 2 parcels); 467' frontage along Tukwila International Blvd (Hwy 99); excellent access to I-5, I-405, Hwy 518, Hwy 509, SeaTac Airport, Boeing Field, and Southcenter Mall; owner will carry contract.**

**Arne Svendsen**  
(206) 336-5331  
[asvendsen@andoverco.com](mailto:asvendsen@andoverco.com)