

LAND EXCLUSIVE LISTINGS

DECEMBER 2019



Fed Way Center

S 344th St & 9th Ave S
Federal Way, WA 98003

Listing Type: **For Sale**
Available: **Now**

Acres: **4.39 AC**
Zoning: **CE**
RR: **No**
Wet: **No**
PSF: **\$17.00**
Price: **\$3,251,000**

Comments: **Current zoning (CE) allows a variety of uses including from flex, industrial, warehouse, business park, medical/office development across from St. Francis Hospital. Build-to-Suit for sale/lease or land sale. Two tax lots at 2.2 acres.**

Brian Bruininks, CCIM
(206) 336-5324
bbruininks@andoverco.com

Jeff Crane
(206) 336-5336
jcrane@andoverco.com



7990 NE Ecology Rd

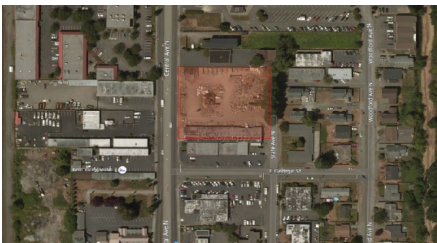
7990 NE Ecology Rd
Kingston, WA 98346

Listing Type: **For Sale**
Available: **Now**

Acres: **2.32 AC**
Zoning: **REC**
RR: **No**
Wet: **Unknown**
PSF: **\$4.93**
Price: **\$498,000**

Comments: **Two buildings. 1,632 and 384 SF. Fenced and lighted.**

Dave Dunn, CCIM
(206) 336-5326
ddunn@andoverco.com



Dowell Building

760 N Central Ave
Kent, WA 98032

Listing Type: **For Lease OR Sale**
Available: **Now**

Acres: **1.5 AC**
Zoning: **GCMU**
RR: **No**
Wet: **Unknown**
PSF: ---
Price/Rate: ---

Comments: **8,380 SF industrial building situated on 1.5 acres of lit yard. Call broker for price/rate.**

Dave Baumer
(206) 948-8779
dbaumer@andoverco.com

LAND EXCLUSIVE LISTINGS

DECEMBER 2019



Fed Way Center

S 344th St & 9th Ave S
Federal Way, WA 98003

Listing Type: **For Sale**
Available: **Now**

Acres: **2.2 AC**
Zoning: **CE**
RR: **No**
Wet: **No**
PSF: **\$17.00**
Price: **\$1,434,213**

Comments: **Current zoning (CE) allows a variety of uses including from flex, industrial, warehouse, business park, medical/office development across from St. Francis Hospital. Build-to-Suit for sale/lease or land sale. Two tax lots at 2.2 acres.**

Brian Bruininks, CCIM
(206) 336-5324
bbruininks@andoverco.com

Jeff Crane
(206) 336-5336
jcrane@andoverco.com



Van Doren's Property

5480 S 228th St
Kent, WA 98032

Listing Type: **For Lease**
Available: **June 1, 2020**

Acres: **1.29 AC**
Zoning: **M1**
RR: **No**
Wet: **No**
PSF: ---
Rate: **\$9,500/Month, Gross**

Comments: **Fenced, lighted, and secured yard. Includes 1,600 SF office building. Excellent access to I-5 from the new S 228th overpass.**

Jeff Crane
(206) 336-5336
jcrane@andoverco.com



Hwy 99 Opportunity Zone

13475-13545 Tukwila
International Blvd
Tukwila, WA 98168

Listing Type: **For Sale**
Available: **Now**

Acres: **0.88 AC**
Zoning: **MUO**
RR: **No**
Wet: **No**
PSF: **\$25.64**
Price: **\$985,000**

Comments: **38,418 SF (0.88 AC, 2 parcels); 467' frontage along Tukwila International Blvd (Hwy 99); excellent access to I-5, I-405, Hwy 518, Hwy 509, SeaTac Airport, Boeing Field, and Southcenter Mall; owner will carry contract.**

Arne Svendsen
(206) 336-5331
asvendsen@andoverco.com