



Fed Way Land

S 344th St & 9th Ave S
Federal Way, WA 98003

Listing Type: **For Sale**
Available: **Now**

Acres: **4.39 AC**
Zoning: **CE**
RR: **No**
Wet: **No**
PSF: **\$17.00**
Price: **\$3,251,000**

Comments: **Current zoning (CE) allows a variety of uses including from flex, industrial, warehouse, business park, medical/office development across from St. Francis Hospital. Build-to-Suit for sale/lease or land sale. Two tax lots at 2.2 acres.**

Brian Bruininks, CCIM
(206) 336-5324
bbruininks@andoverco.com

Jeff Crane
(206) 336-5336
jcrane@andoverco.com



Kent Development Site

15326 SE 272nd St
Kent, WA 98042

Listing Type: **For Sale**
Available: **Now**

Acres: **3.82 AC**
Zoning: **CC**
RR: **No**
Wet: **No**
PSF: **\$20.00**
Price: **\$3,330,000**

Comments: **Ready to build! Improvements on the property include 3,500 SF industrial building (shop/office), a small house (cabin), and a single wide (residence). Zoned Community Commercial (CC).**

Arne Svendsen
(206) 336-5331
asvendsen@andoverco.com



15815 SE 128th St Land

15815 SE 128th St
Renton, WA 98059

Listing Type: **For Lease**
Available: **September 1, 2020**

Acres: **1.95 AC**
Zoning: **R4**
RR: **No**
Wet: **No**
Rent: **\$8,500.00/month, NET**

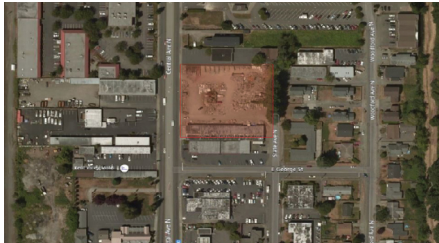
Comments: **Graveled and fenced; 1,180 SF house/office conversion; approximately 1,000 SF storage shed; new second entrance to be installed; tenant responsible for taxes, insurance, utilities, and maintenance costs.**

Dave Baumer
(206) 948-8779
dbaumer@andoverco.com

Jeff Crane
(206) 336-5336
jcrane@andoverco.com

LAND EXCLUSIVE LISTINGS

JULY 2020



Dowell Building

760 N Central Ave
Kent, WA 98032

Listing Type: **For Lease OR Sale**

Available: **Now**

Acres: **1.5 AC**
Zoning: **GCMU**
RR: **No**
Wet: **Unknown**
PSF: ---
Price/Rate: ---

Comments: **8,380 SF industrial building situated on 1.5 acres of lit yard. Call broker for price/rate.**

Dave Baumer
(206) 948-8779
dbaumer@andoverco.com



Hwy 99 Opportunity Zone

13475-13545 Tukwila
International Blvd
Tukwila, WA 98168

Listing Type: **For Sale**
Available: **Now**

Acres: **0.88 AC**
Zoning: **MUO**
RR: **No**
Wet: **No**
PSF: **\$25.64**
Price: **\$985,000**

Comments: **38,418 SF (0.88 AC, 2 parcels); 467' frontage along Tukwila International Blvd (Hwy 99); excellent access to I-5, I-405, Hwy 518, Hwy 509, SeaTac Airport, Boeing Field, and Southcenter Mall; owner will carry contract.**

Arne Svendsen
(206) 336-5331
asvendsen@andoverco.com



8801 S 228th St Land

8801 S 228th St
Kent, WA 98031

Listing Type: **For Lease**
Available: **Pending**

Acres: **0.54 AC**
Zoning: **CM-1**
RR: **No**
Wet: **No**
Rate: **\$4,500/month, gross**

Comments: **23,520 SF of yard space (approximately 147' x 160'). Graveled and fenced. Close to freeway interchange. Corner lot. Not suitable for trailer parking.**

Dave Dunn, CCIM
(206) 336-5326
ddunn@andoverco.com