

11,154 SF TOTAL

ONE (1) SPACE REMAINING



LANDING CENTER, BLDG B

22408 66TH AVE S | KENT, WA

BRIAN BRUININKS, CCIM

(206) 856-6249

bbruininks@andoverco.com

SHANE MAHVI

(858) 442-0441

smahvi@andoverco.com



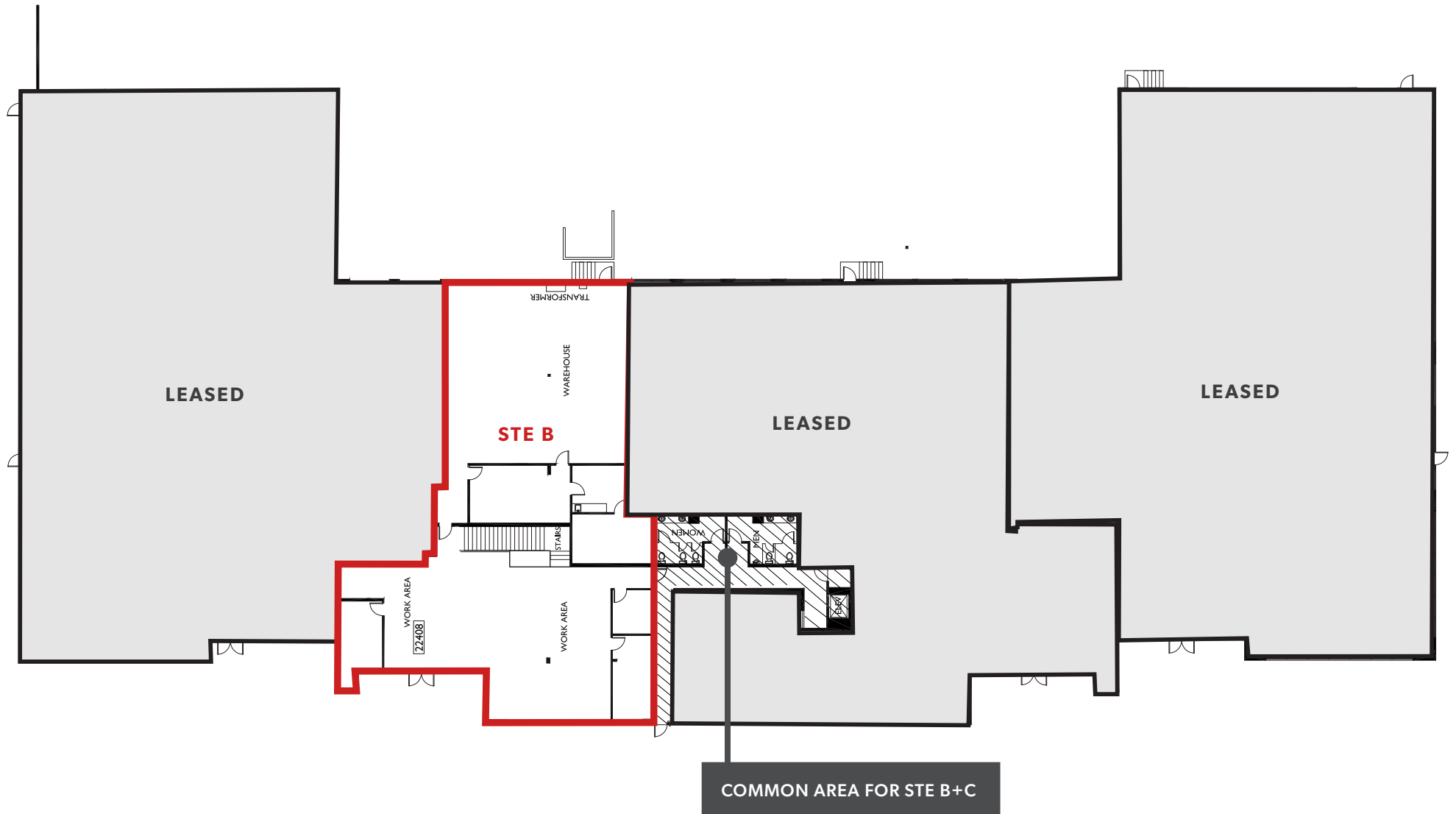
VACANCIES

ALL SPACES AVAILABLE NOW

SUITE(S)	SF AVAILABLE WAREHOUSE OFFICE	DATE AVAILABLE	LOADING CEILING HEIGHT	ASKING RATE (+ NNN'S)	ADDITIONAL INFO
Suite B	11,154 SF 8,230 SF office on two (2) floors* (2,746 SF 1 st floor office, 4,806 SF 2 nd floor office)	Available Now	2 DH 22' CH	\$0.80 shell/\$0.95 add-on for office	Middle suite with two (2) story office. Climate controlled warehouse/assembly/ production/R&D space. Elevator in place. Ramp door is possible. *Includes portion of common area restroom, elevator and hallways for both floors.
Suite C	12,395 SF 6,462 SF office on two (2) floors* (3,895 SF 1 st floor office, 2,567 SF 2 nd floor office)	Leased	4 DH 22' CH	---	Middle suite with two (2) story office. Climate controlled warehouse/assembly/ production/R&D space. Elevator in place. *Includes portion of common area restroom, elevator and hallways for both floors.

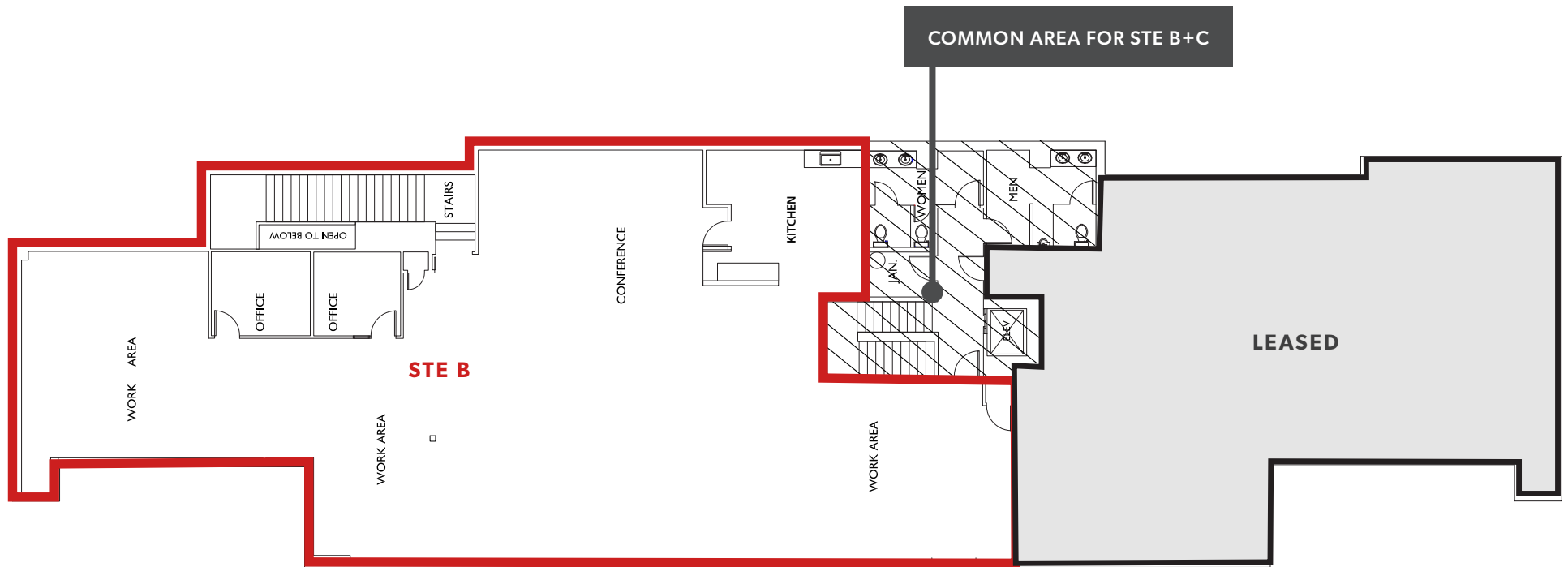
LEASED

FLOOR PLAN - 1ST FLOOR



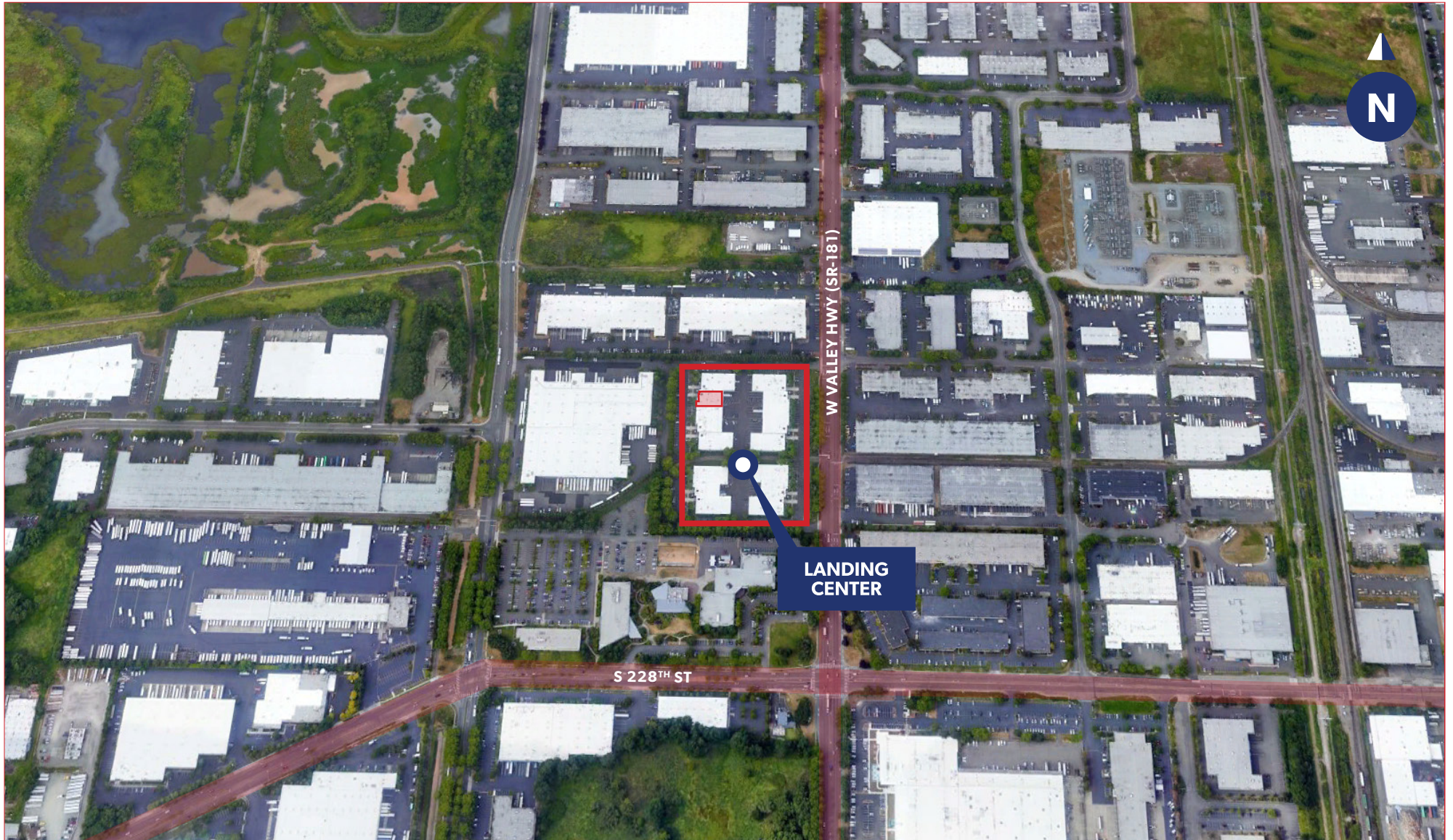
The information contained herein has been obtained from reliable sources, but is not guaranteed. A prospective buyer/tenant should verify each item relating to this property and all information contained herein.

FLOOR PLAN - 2ND FLOOR (OFFICE AREA)



The information contained herein has been obtained from reliable sources, but is not guaranteed. A prospective buyer/tenant should verify each item relating to this property and all information contained herein.

LOCATION MAP



BRIAN BRUININKS, CCIM
(206) 856-6249
bbruininks@andoverco.com

SHANE MAHVI
(858) 442-0441
smahvi@andoverco.com

 **THE ANDOVER
COMPANY, INC.**
CORFAC INTERNATIONAL