

**47,025 SF TOTAL**  
3,170 SF OF OFFICE



# KENT WEST CORPORATE PARK

6531 SOUTH 219<sup>TH</sup> STREET | BLDG D | KENT, WA

**BRIAN BRUININKS, CCIM**  
(206) 336-5324  
bbruininks@andoverco.com

**SHANE MAHVI**  
(206) 336-5338  
smahvi@andoverco.com

 **THE ANDOVER  
COMPANY, INC.**  
CORFAC INTERNATIONAL



# KENT WEST CORPORATE PARK

Located on West Valley Highway, Kent West Corporate Park is minutes from major freeways. Designed for a wide variety of users suites range from 2,000 SF - 250,000 SF. High quality finishes are visible throughout the park.

## FEATURES

Total Size: **402,760 SF**

---

Number of Buildings: **5**

---

Date of Construction: **1990**

---

Tenant Sizes: **2,150 SF - 250,000 SF**

---

Clear Height: **14' -24'**

---

Truck Loading: **Dock High and Grade Level**

---

Parking: **0.91/1,000 SF**

---

Zoning: **M1**



# SUITE 6531

Size: **47,025 SF TOTAL**

Office Space: **3,170 SF**

Clear Height: **24'**

Docks: **18**

Grade Level: **1**

Cross Loaded Space

Edge of Dock Levelers: **7**

Pit Levelers: **11**

Available: **04/01/2022**

Please call brokers for rates

**BRIAN BRUININKS, CCIM**

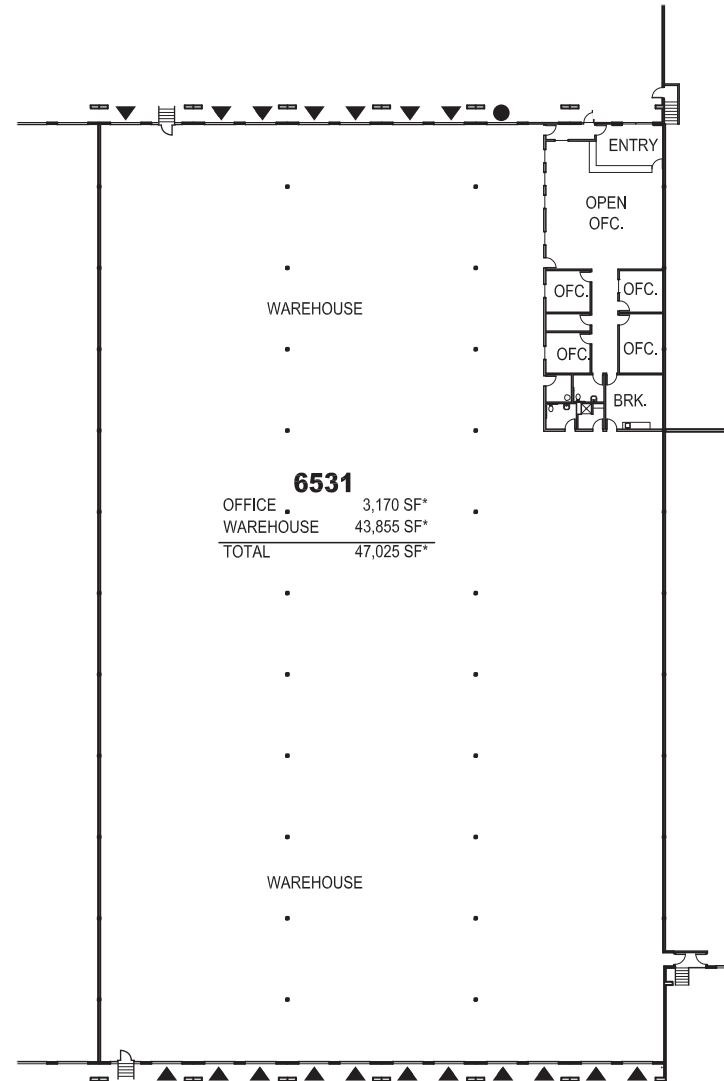
(206) 336-5324

bbruininks@andoverco.com

**SHANE MAHVI**

(206) 336-5338

smahvi@andoverco.com

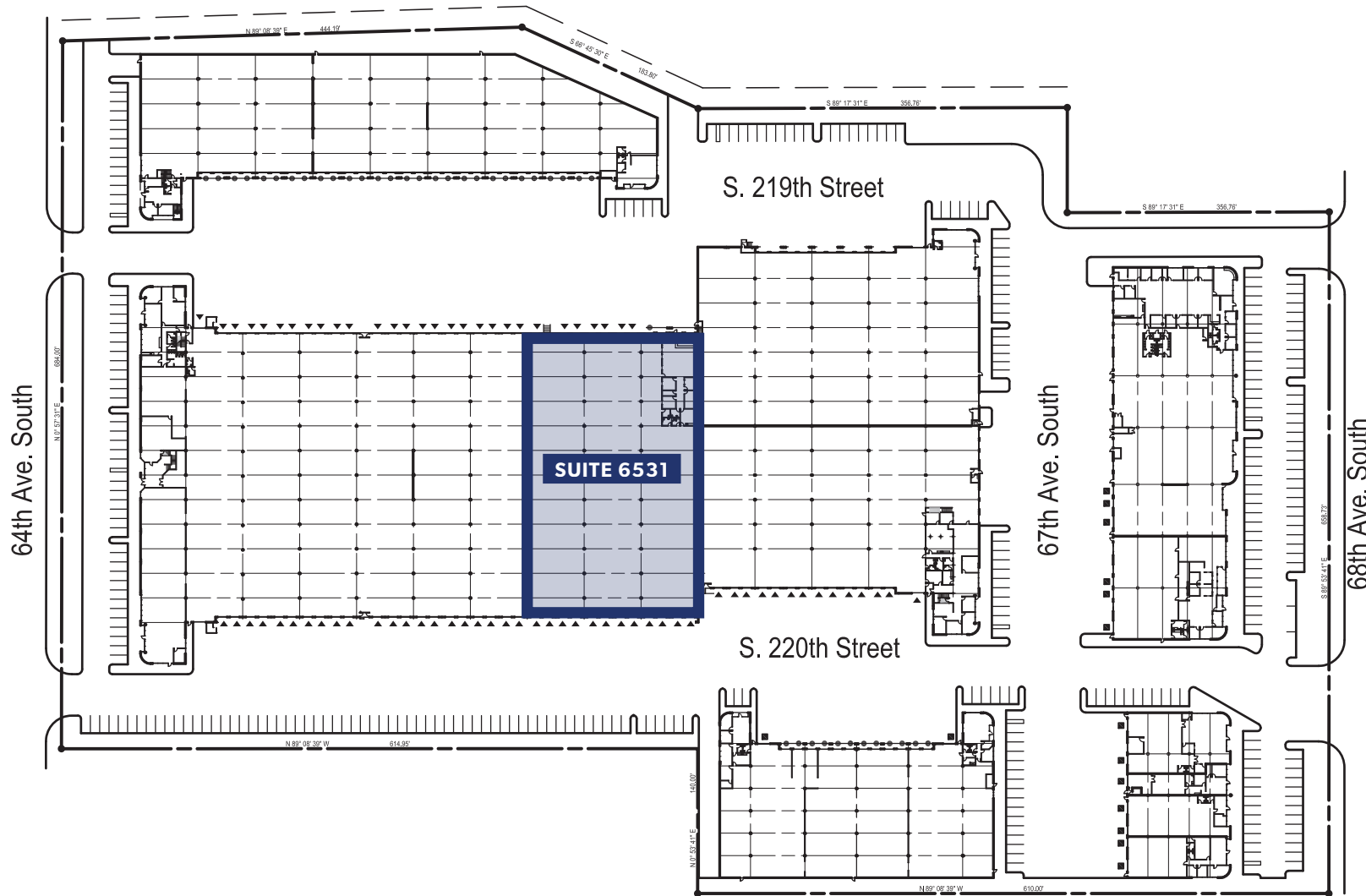


▲ Dock high door

● Drive-in door

The information contained herein has been obtained from reliable sources, but is not guaranteed. A prospective buyer/tenant should verify each item relating to this property and all information contained herein.

# SITE PLAN



Overall Site / Building Plan



The information contained herein has been obtained from reliable sources, but is not guaranteed. A prospective buyer/tenant should verify each item relating to this property and all information contained herein.

# CONVENIENT COMMUTE

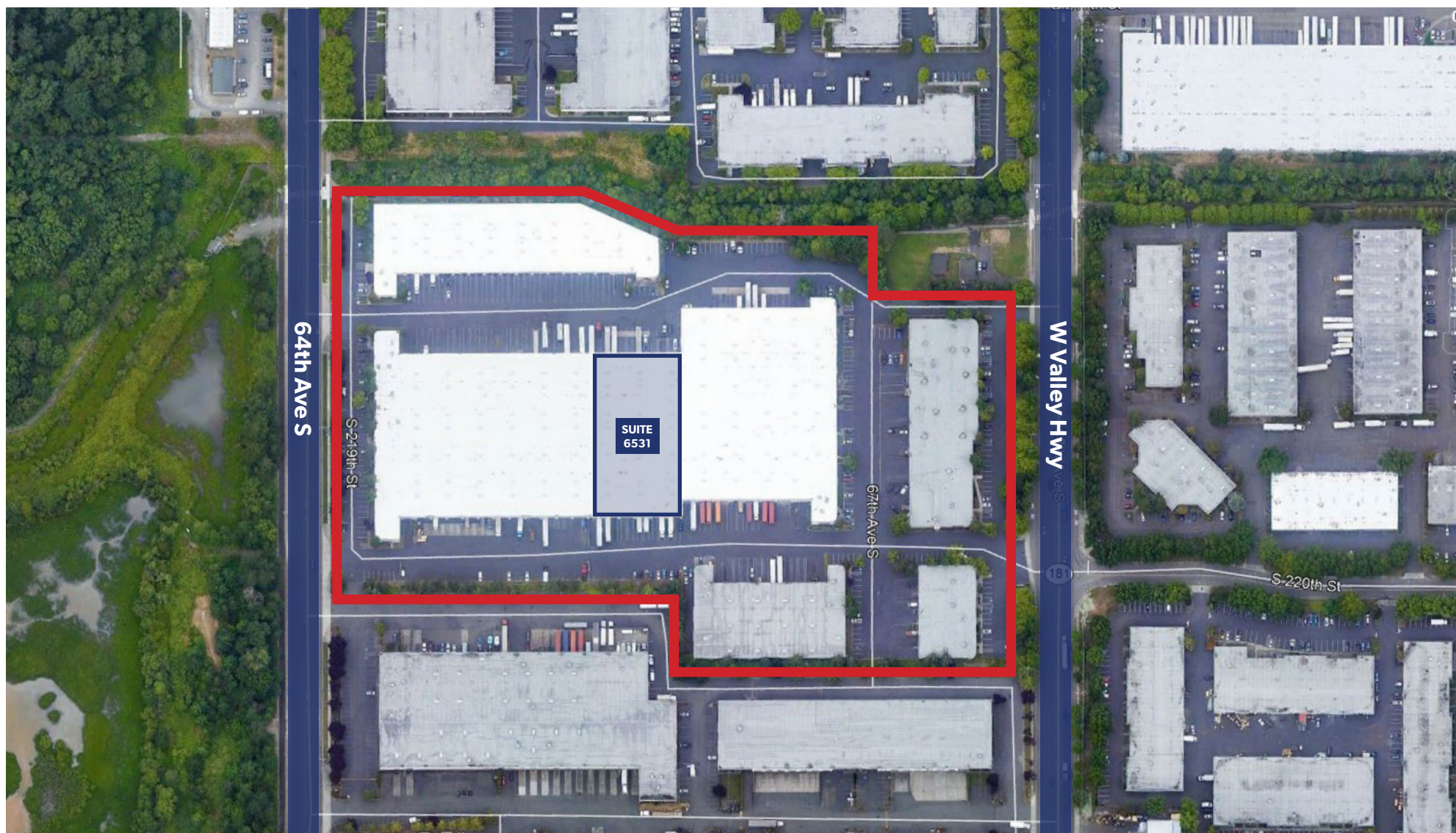


**KENT WEST  
CORPORATE PARK**



	<b>CURRENT ESTIMATED DRIVING TRAVEL TIMES</b>	
PORT OF SEATTLE	15 MILES	23 MIN.
SEATTLE CBD	17 MILES	23 MIN.
PORT OF TACOMA	19 MILES	28 MIN.
TACOMA CBD	20 MILES	29 MIN.
SEATAC INT. AIRPORT	5.7 MILES	15 MIN.
BELLEVUE	17.7 MILES	28 MIN.

# LOCATION MAP



**BRIAN BRUININKS, CCIM**  
(206) 336-5324  
bbruininks@andoverco.com

**SHANE MAHVI**  
(206) 336-5338  
smahvi@andoverco.com

 **THE ANDOVER  
COMPANY, INC.**  
CORFAC INTERNATIONAL