

# Centerpointe Business Park

18026 | 72<sup>nd</sup> Avenue South  
Kent, WA

## Flex Space

**4,818 SF** Total  
**3,346 SF** Office area



 THE ANDOVER  
COMPANY, INC.  
CORFAC INTERNATIONAL

**BRIAN BRUININKS, CCIM**  
(206) 856-6249  
[bbruininks@andoverco.com](mailto:bbruininks@andoverco.com)

**MIKE HEMPHILL**  
(206) 550-4176  
[mhemphill@andoverco.com](mailto:mhemphill@andoverco.com)



# PROPERTY HIGHLIGHTS



OFFICE AREA:  
3,346 SF



14' CLEAR  
HEIGHT



1 GRADE  
LEVEL DOOR



ACCESS TO TRUCK  
DOCK WELL



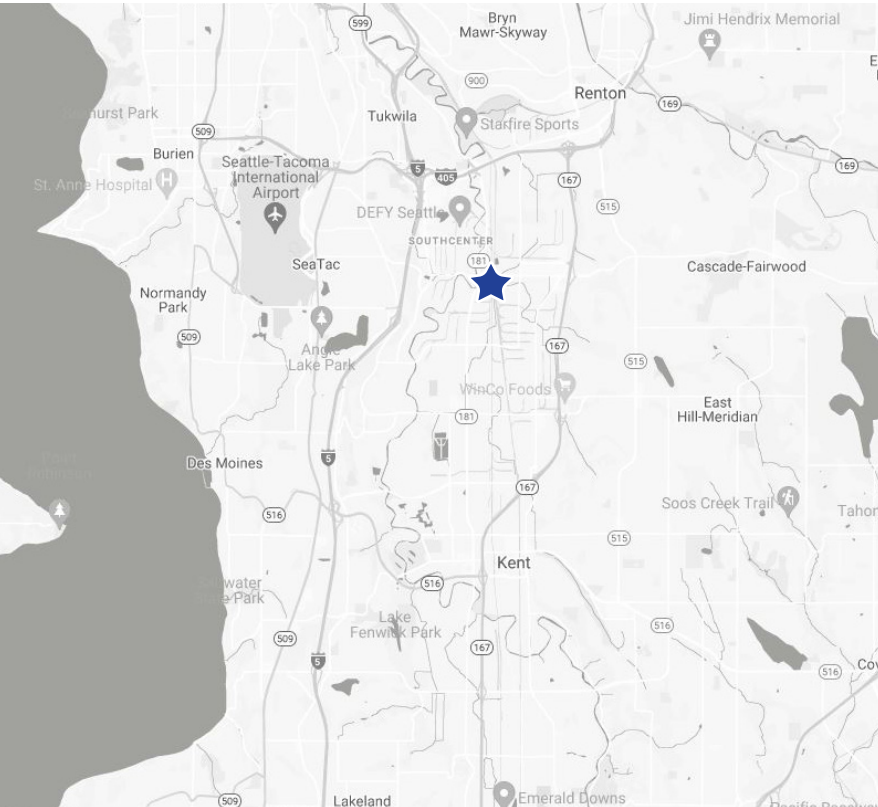
AVAILABLE  
OCTOBER 1ST,  
2022



RATES:  
PLEASE CALL LISTING  
BROKERS



# 18026 | 72<sup>nd</sup> Avenue South Kent, WA



## Strategic Location

- Great smaller flex industrial space at the north end of Kent.
- Close to Southcenter and all major freeways.
- Space has two entries, mix of open space.
- 4 private offices and conference room.
- 4 restrooms.
- Loading area is designed to accommodate larger delivery trucks.
- Please call listing agents for rates and access to tour.
- Available October 1st, 2022.

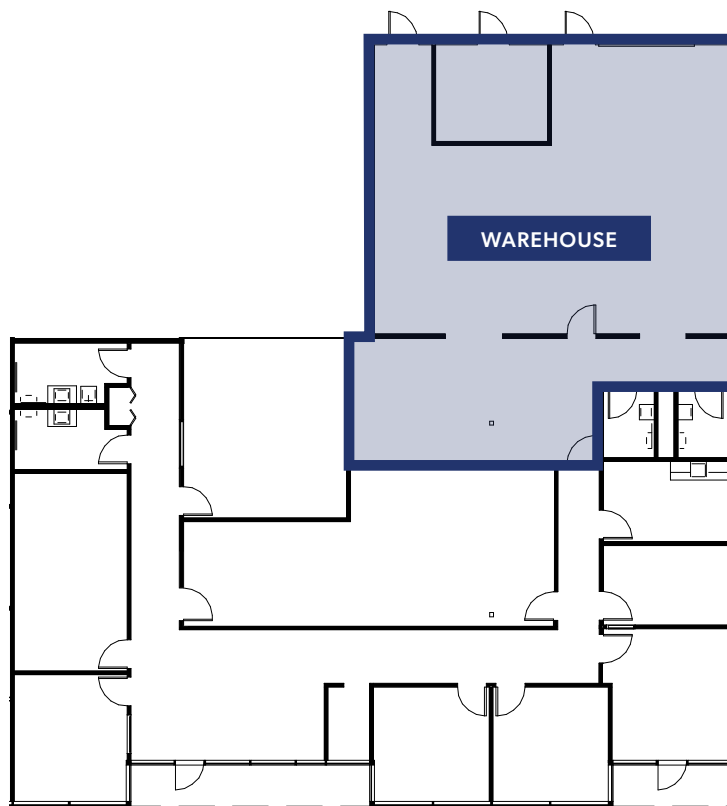
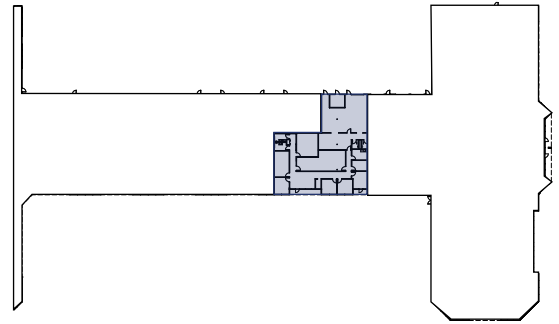




# 18026

72<sup>nd</sup> Avenue South  
Kent, WA

Total SF: **4,818 SF**  
Office SF: **3,346 SF**



**BRIAN BRUININKS, CCIM**  
(206) 856-6249  
bbruininks@andoverco.com

**MIKE HEMPHILL**  
(206) 550-4176  
mhemphill@andoverco.com

