

Campus Park

1,907 SF of
Warehouse/Office

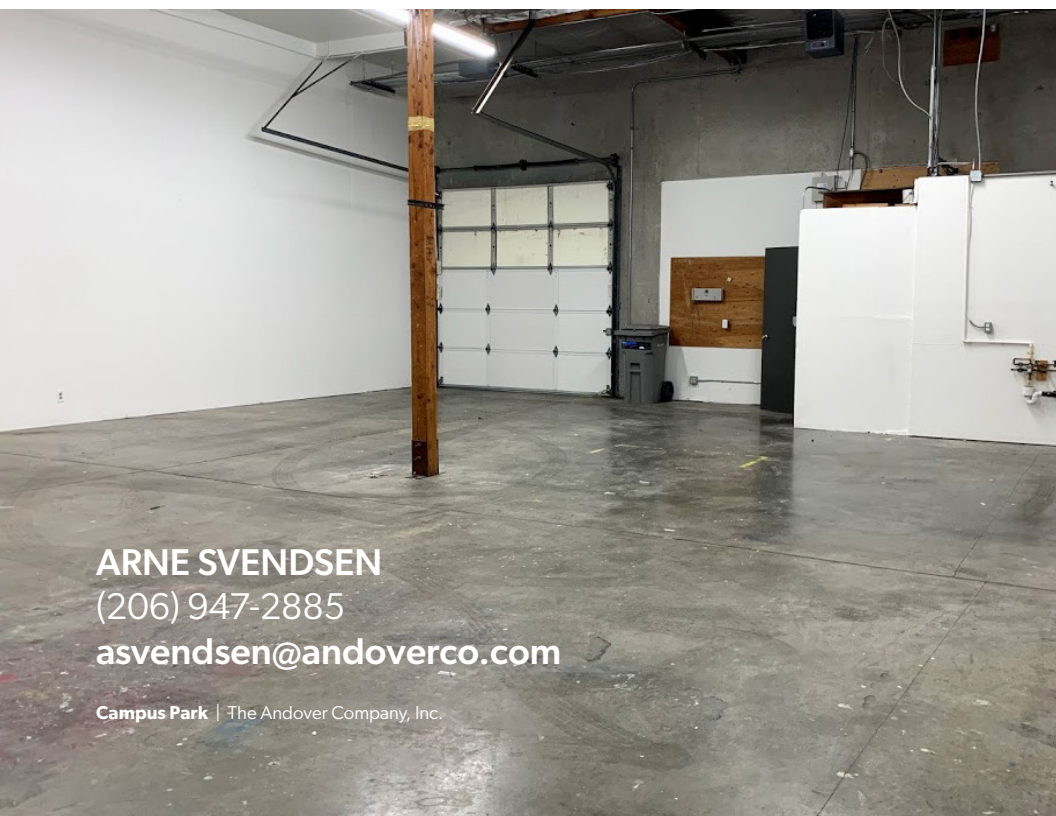


 THE ANDOVER
COMPANY, INC.
CORFAC INTERNATIONAL

Campus Park is owned and operated by:

 **Schnitzer**
PROPERTIES

ARNE SVENDSEN
(206) 947-2885
asvensen@andoverco.com



ARNE SVENDSEN
(206) 947-2885
asvensen@andoverco.com

Campus Park | The Andover Company, Inc.

PROPERTY HIGHLIGHTS



IDEAL FOR LIGHT MANUFACTURING AND DISTRIBUTION WITH SMALL OFFICE.



ALL BAY UNITS HAVE RESTROOMS, SMALL OFFICE, AND RECEPTION AREA.



HIGH-QUALITY SPACE WITH NEW CARPET AND PAINT.



3-PHASE POWER.



GL LOADING DOORS (10' X 10').



14' - 15' CLEARANCE HEIGHT.



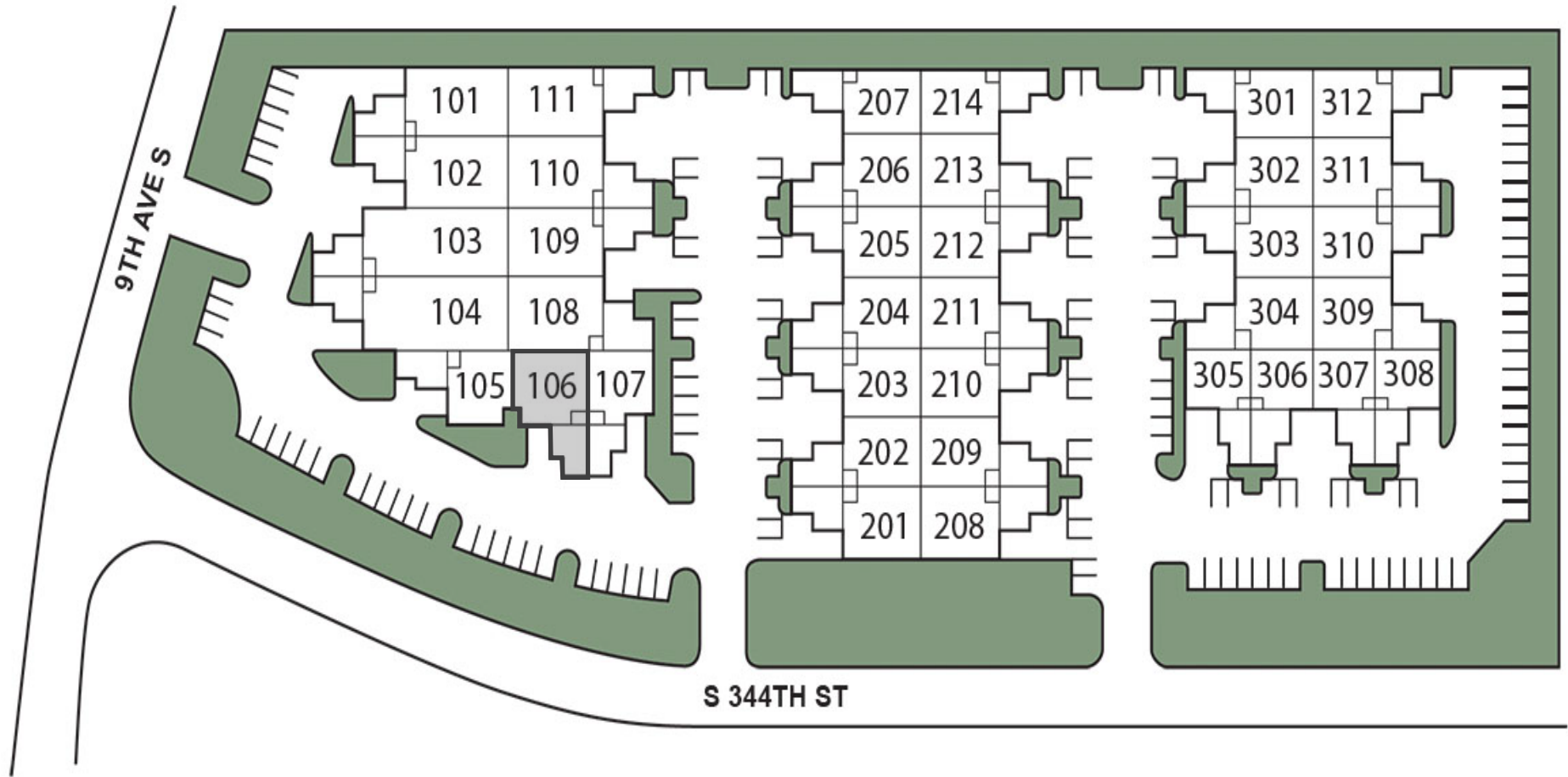
EXCELLENT ACCESS AND PROXIMITY TO I-5, SR-18, AND SR-99.



WITHIN MINUTES TO NEARBY BUSINESSES, BANKING, RESTAURANTS, AND RETAIL SERVICES.

AVAILABLE SPACES

1,907 SF



ARNE SVENDSEN
(206) 947-2885
asvensen@andoverco.com

Campus Park | The Andover Company, Inc.



AVAILABLE SPACES

1,907 SF

BLDG	SUITE	TOTAL SF	OFFICE SF	MONTHLY RENT	EST. NNN'S	COMMENTS
1	106	1,907	601	\$2,384	\$748	3 phase power, 1 GL.

ARNE SVENDSEN
(206) 947-2885
asvensen@andoverco.com

UNIT 106

BUILDING: 1

TOTAL SF: 1,907

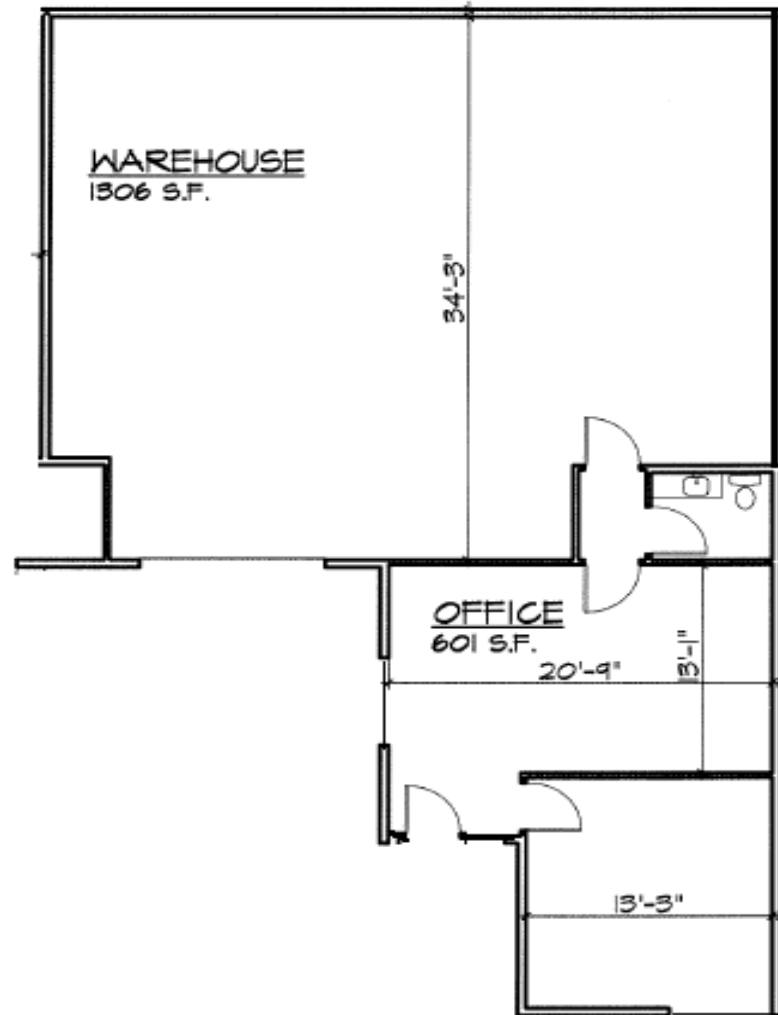
OFFICE SF: 601

MONTHLY RENT: \$2,384

EST. NNN'S: \$748

AVAILABLE: NOW

LOADING: 1 GL



ARNE SVENDSEN
(206) 947-2885
asvensen@andoverco.com





ARNE SVENDSEN

(206) 947-2885

asvensen@andoverco.com

Campus Park | The Andover Company, Inc.