

PARK 26

1320 26TH ST NW
AUBURN, WA

FOR LEASE
3,000 SF
6,000 SF



Shane Mahvi
(206) 336-5338
smahvi@andoverco.com

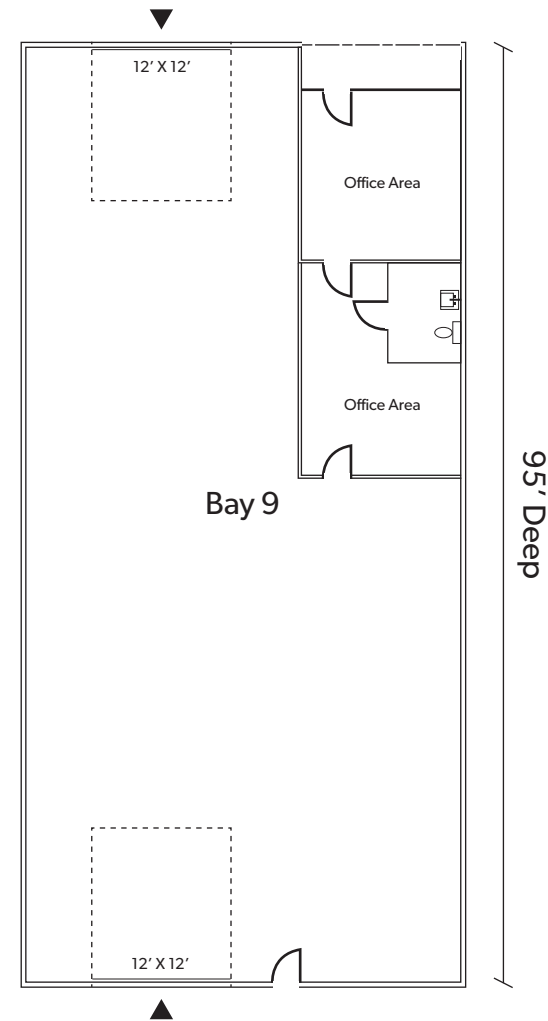
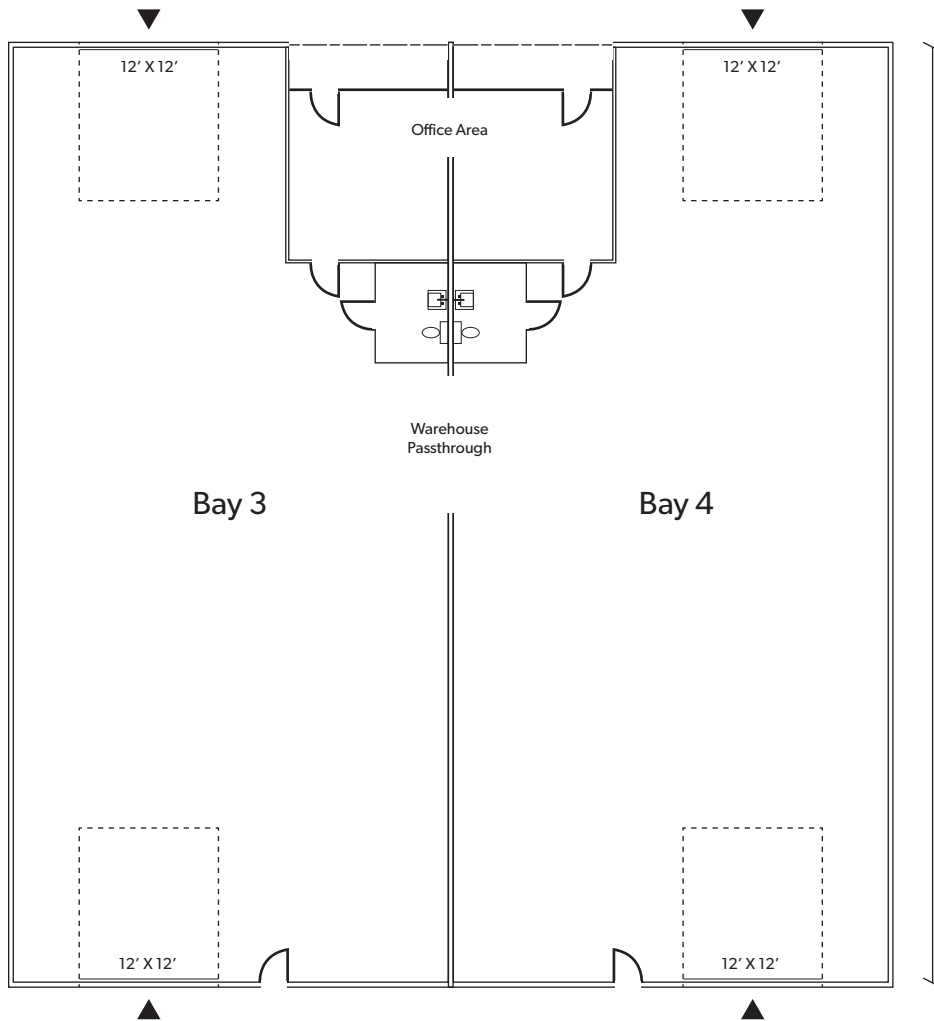
Dave Dunn, CCIM
(206) 336-5326
ddunn@andoverco.com



PARK 26

1320 26TH ST NW | AUBURN, WA

*Floor plans are approximate and not to scale.



BAY 3 + 4

- 6,000 SF
- ± 500 SF Office
- 18' Clear Height
- 4 Oversized grade level doors
- Drive -thru loading
- \$0.90/SF + NNN
- Available July 1st, 2023

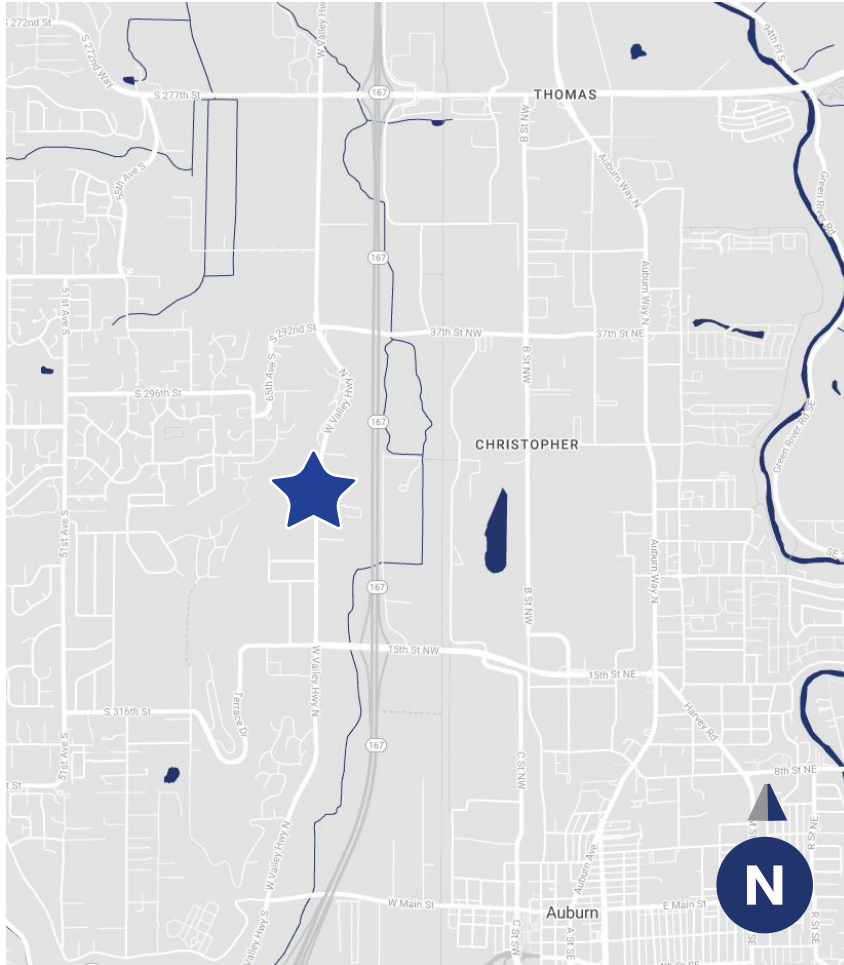
Divisible to 3,000 SF, Bay 3 and Bay 4 can be split

BAY 9

- 3,000 SF Total
- ± 500 SF Office
- 18' Clear Height
- 2 Oversized grade level doors
- \$0.95/SF + NNN
- Available June 1st, 2023

PARK 26

1320 26TH ST NW | AUBURN, WA



The information contained herein has been obtained from reliable sources, but is not guaranteed. A prospective buyer/tenant should verify each item relating to this property and all information contained herein.

Shane Mahvi
(206) 336-5338
smahvi@andoverco.com

Dave Dunn, CCIM
(206) 336-5326
ddunn@andoverco.com

PARK 26 | THE ANDOVER COMPANY, INC.