

EAST CAMPUS PLAZA

32129 WEYERHAEUSER WAY S



THE ANDOVER
COMPANY, INC.

CORFAC INTERNATIONAL



HIGH QUALITY OFFICE SPACE IN THE ESTEEMED EAST CAMPUS NEIGHBORHOOD



EASY TO FIND WITH IMMEDIATE ACCESS TO I-5 VIA THE S 320TH ST INTERCHANGE



LARGE WINDOWS & PLENTY OF NATURAL LIGHT CREATE A MORE PRODUCTIVE WORK ENVIRONMENT



PLENTIFUL FREE 4.0/1,000 SF PARKING RATIO



STATE-OF-THE-ART TELECOMMUNICATION SERVICE THROUGH CENTURYLINK & COMCAST BUSINESS CABLE



METRO BUS ROUTE COMES TO BUILDING & CLOSE TO THE EXTENSIVE FEDERAL WAY TRANSIT CENTER



GORGEOUS VIEWS OF MT. RAINIER & BEAUTIFUL SETTING IN 500 ACRE WOODED CORPORATE CAMPUS



EXTERIOR SIGNAGE AVAILABLE TO LARGE TENANTS



DAVITA CAFÉ IS 2 BLOCKS AWAY & A MULTITUDE OF RESTAURANTS ARE WITHIN A 2-3 MINUTE DRIVE





AERIAL VIEW



EAST CAMPUS PLAZA



 CURRENT ESTIMATED DRIVING TRAVEL TIMES	
SEATAC INTERNATIONAL AIRPORT	15 MIN.
SEATTLE	25 MIN.
TACOMA	15 MIN.

EAST CAMPUS PLAZA | THE ANDOVER COMPANY, INC.

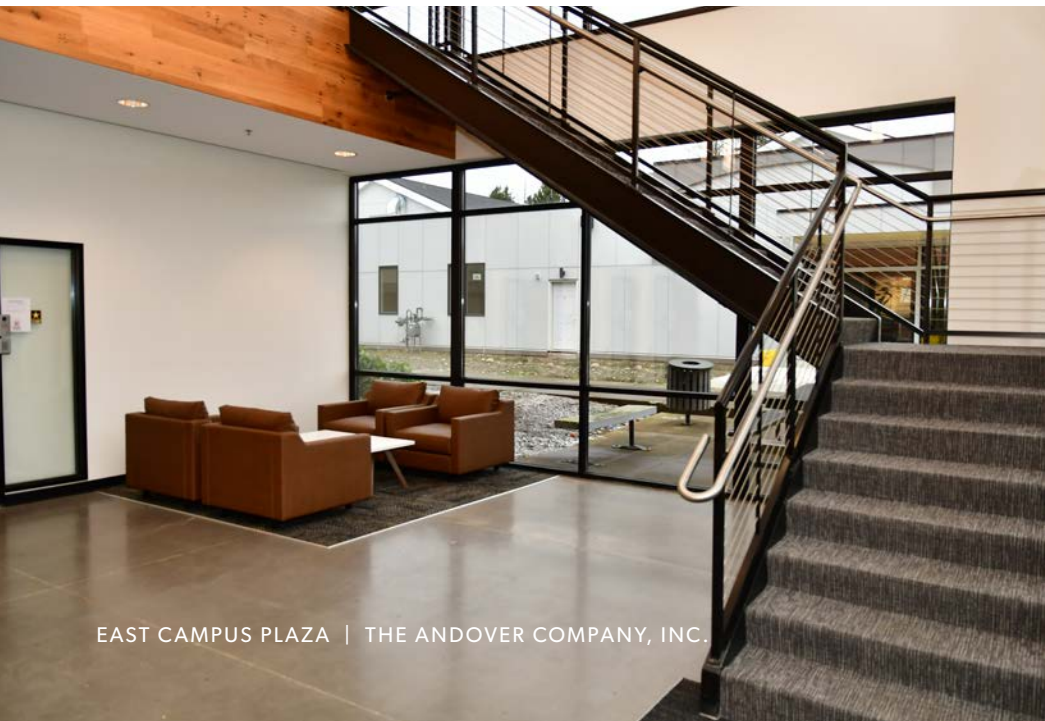
HIGH QUALITY OFFICE SPACE

Building Size	29,000 square feet
Floor Size	14,500 square feet
Design	Design by Collins Woerman
Parking	Surface stalls at 4/1,000 square feet in lighted parking lot
Location	Building is located just southeast of the corner of I-5 and S 320 th St in Federal Way. Access to Seattle, Tacoma, and SeaTac International Airport is excellent.
Amenities Galore	Hotels two minutes away; multitude of restaurants, retail and other services in and around The Commons at Federal Way half a mile away. DaVita Café (two blocks away) serves excellent coffee/ espresso, breakfast and lunch.
Structure	Concrete tilt-up construction
Elevators	One
Telecommunications	Telecommunication and fiber services provided by CenturyLink and Comcast Business Cable



AVAILABLE SPACES

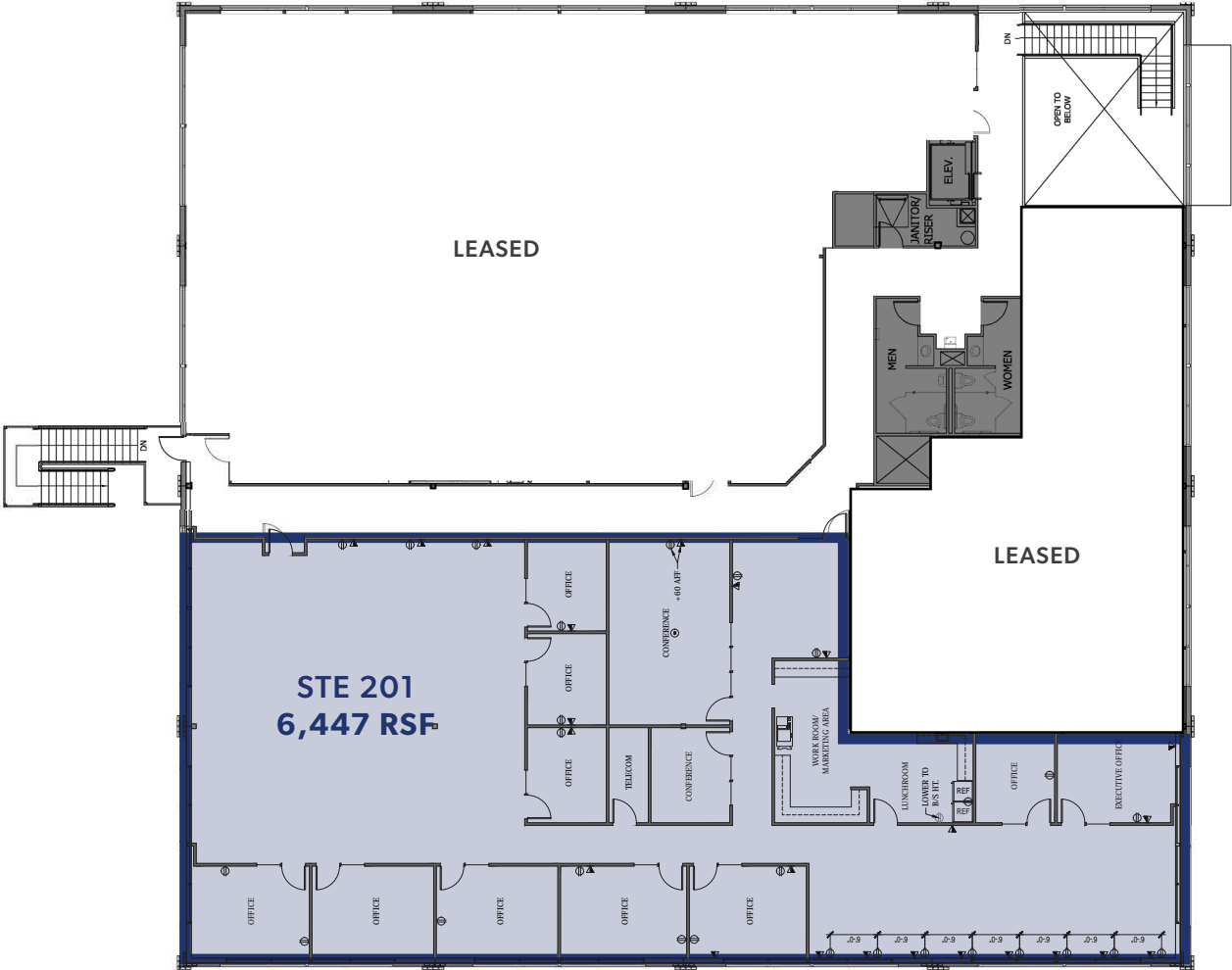
FLOOR/STE	RENTABLE SF	COMMENTS
FLOOR 2 - STE 201	6,447 SF	Great open work space with plenty of natural light. Mixture of private offices and conference rooms.



EAST CAMPUS PLAZA | THE ANDOVER COMPANY, INC.



AVAILABLE SPACE - 2ND FLOOR



WEYERHAEUSER WAY S



MIKE HEMPHILL
(206) 550-4176
mhemphill@andoverco.com

JIM BISSET
(206) 769-3633
jbisset@andoverco.com



EAST CAMPUS PLAZA

32129 WEYERHAEUSER WAY S

This material is based in part upon information supplied by the Owner and in part upon financial information obtained by The Andover Company from sources it deems reasonably reliable. No warranty or representation, expressed or implied, is made by the Owner, TAC, or any of their respective affiliates as to the accuracy or completeness of the information contained herein or to engineering or environmental matters. Prospective purchases should make their own projections and form their own conclusions without reliance upon the material contained herein and conduct their own due diligence, including engineering and environmental inspections, to determine the condition of the property and the existence of any potentially hazardous material located at the property or used in the construction or maintenance of the buildings.