

# FEDERAL WAY

## BUSINESS PARK N

33755 9TH AVE S  
BUILDING D  
FEDERAL WAY, WA

# FOR SUBLEASE

4,095 SF TOTAL  
(1,095 SF OFFICE)



## PROPERTY HIGHLIGHTS

- 4,095 SF TOTAL (1,095 SF OFFICE)
- 1 GRADE LEVEL DOOR
- 12' CLEAR HEIGHT
- SUBLEASE RUNS THROUGH 11/30/2025
- MINUTES FROM I-5, HWY-18 AND HWY-167
- LIMITED FEDERAL WAY INDUSTRIAL PRODUCT
- AVAILABLE NOW
- CALL BROKERS FOR RATES



**JACK CRANE**  
(206) 446-6699  
jacklc@andoverco.com

**JEFF CRANE**  
(206) 949-4339  
jcrane@andoverco.com

 **THE ANDOVER  
COMPANY, INC.**  
CORFAC INTERNATIONAL

# FEDERAL WAY

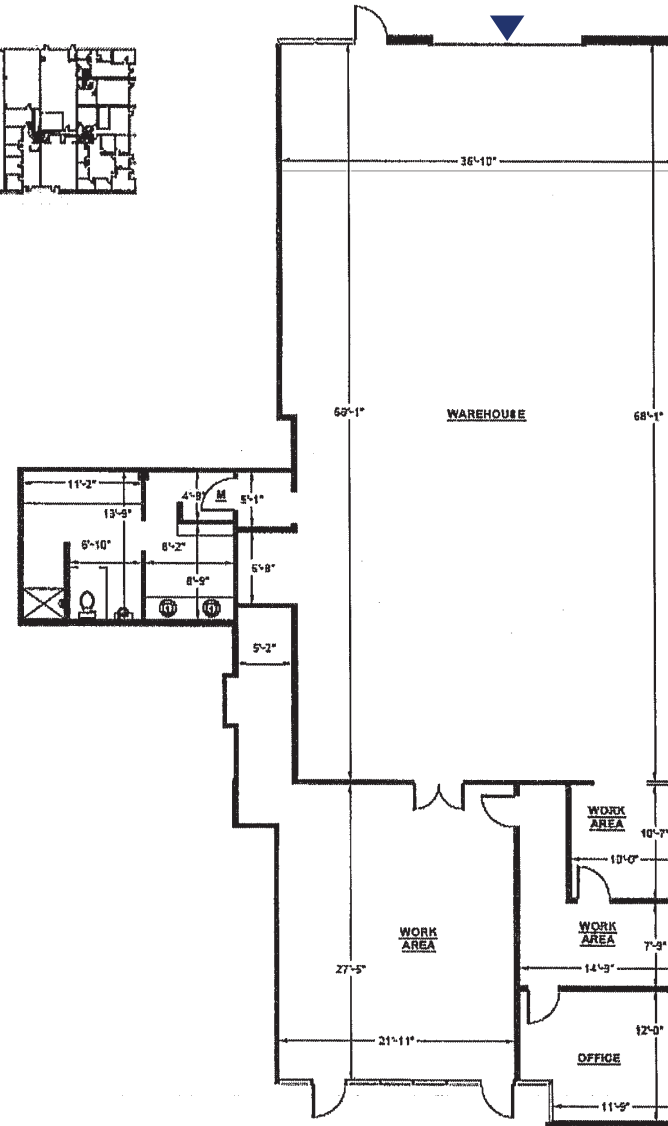
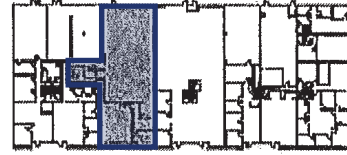
## BUSINESS PARK N

BUILDING D | 4,095 SF TOTAL

1,095 SF OF OFFICE

KEY:

▲ Grade level door



**JACK CRANE**  
(206) 446-6699  
jacklc@andoverco.com

**JEFF CRANE**  
(206) 949-4339  
jcrane@andoverco.com

 **THE ANDOVER  
COMPANY, INC.**  
CORFAC INTERNATIONAL