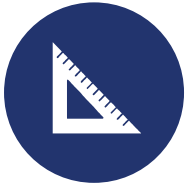


AUBURN CORPORATE CENTER

1002 & 1102 15TH ST SW | AUBURN





266,875 RSF
IN TWO (2)
BUILDINGS



IMMEDIATE ACCESS TO
HWY-18 & HWY-167;
5 MIN TO I-5



FREE PARKING AT
5.0/1,000 PSF



METRO TRANSIT
STOP IN FRONT OF
PROPERTY
(15TH ST SW)



15 MIN AWAY
FROM SEATAC INTL
AIRPORT



ACROSS THE STREET
FROM THE OUTLET
COLLECTION
SEATTLE



WITHIN WALKING
DISTANCE OF
NUMEROUS
RESTAURANTS



LARGE WINDOWS
THROUGHOUT
PROVIDES ABUNDANT
NATURAL DAYLIGHT



STATE-OF-THE-ART
TELECOMMUNICATION
ACCESS, FIBER ON SITE







AUBURN CORPORATE CENTER I

1102 15TH ST SW | AUBURN, WA



AUBURN CORPORATE CENTER II

1002 15TH ST SW | AUBURN, WA

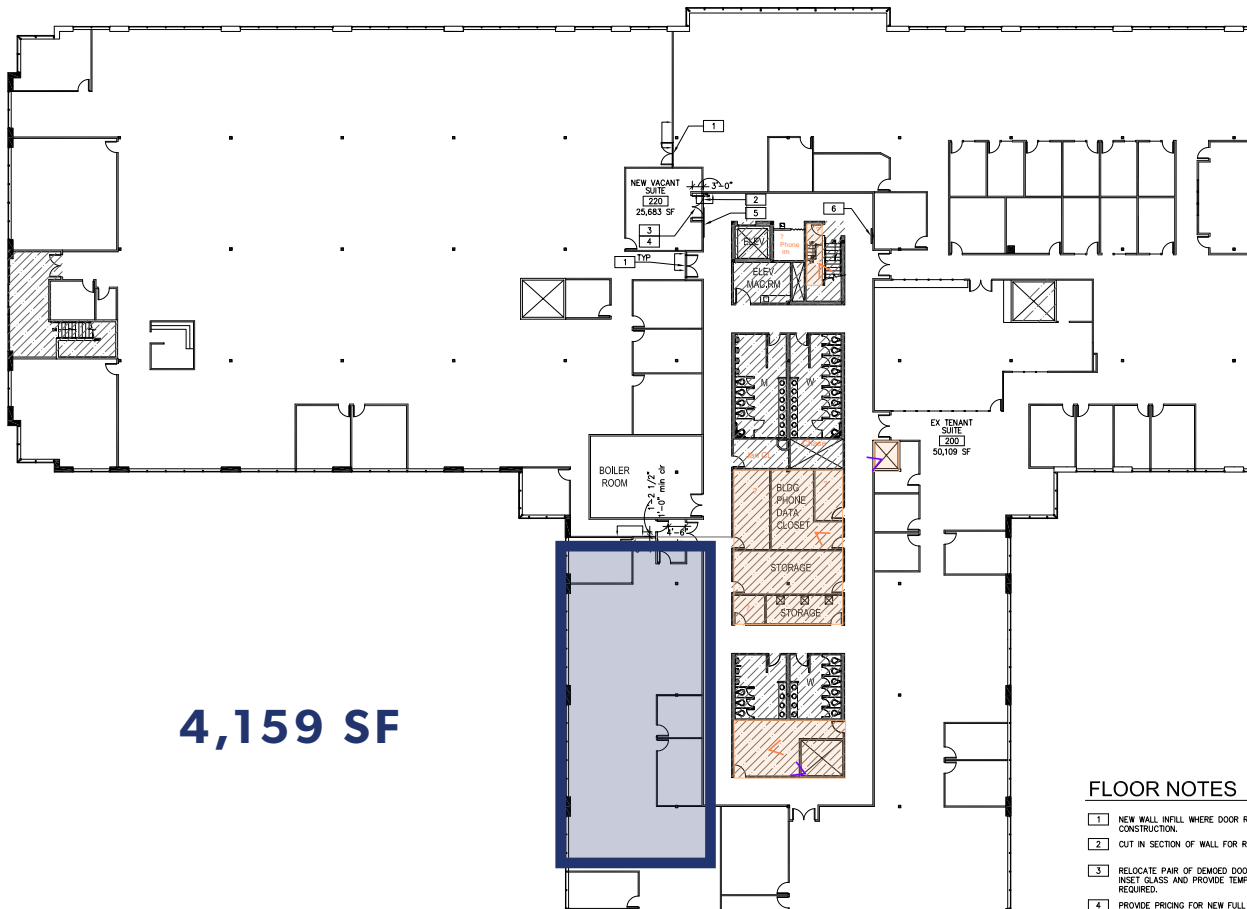
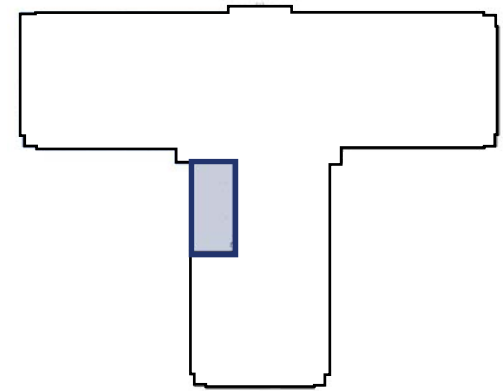
AVAILABLE SPACES

BUILDING/STE	RENTABLE SF	RENTAL RATE	COMMENTS
I - Ste 110	4,159	\$17.00 SF/YR, NNN	<ul style="list-style-type: none"> Open office space Ready for tenant improvement
I - Ste 220	25,683	\$17.00 SF/YR, NNN	<ul style="list-style-type: none"> Seven (7) private offices Three (3) conference rooms Open office area
II - Ste 208	2,820	\$17.00 SF/YR, NNN	<ul style="list-style-type: none"> One (1) conference room Large open office area
II - Ste 230	5,495	\$17.00 SF/YR, NNN	<ul style="list-style-type: none"> Five (5) private offices Lunch room Large open office area



BUILDING I

SUITE 110



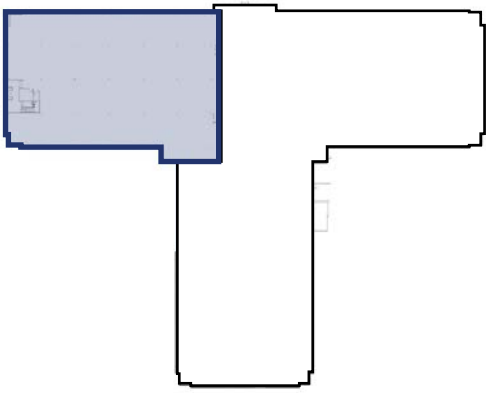
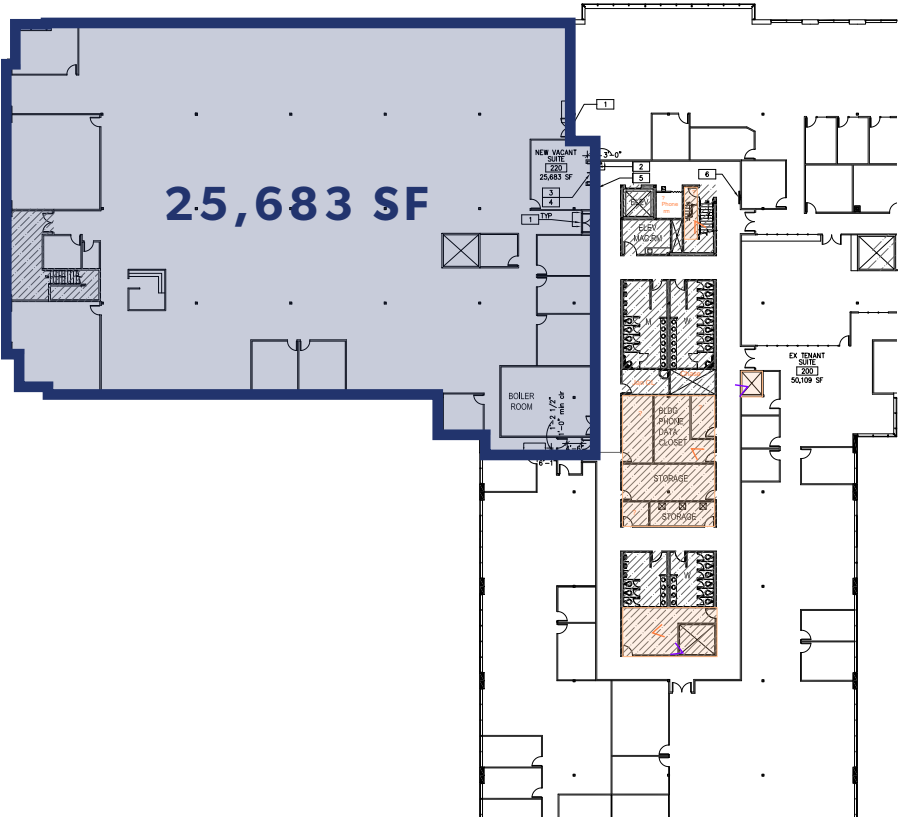
4,159 SF

FLOOR NOTES

- 1 NEW WALL INFILL WHERE DOOR REL CONSTRUCTION.
- 2 CUT IN SECTION OF WALL FOR REL.
- 3 RELOCATE PAIR OF DEMO'D DOOR; INSET GLASS AND PROVIDE TEMP'D REQUIRED.
- 4 PROVIDE PRICING FOR NEW FULL G

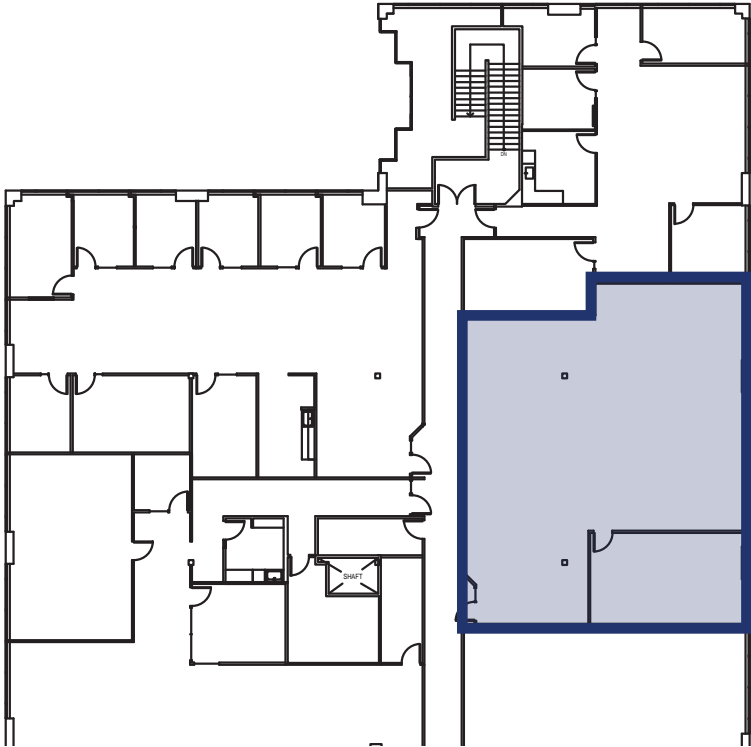
BUILDING I

SUITE 220

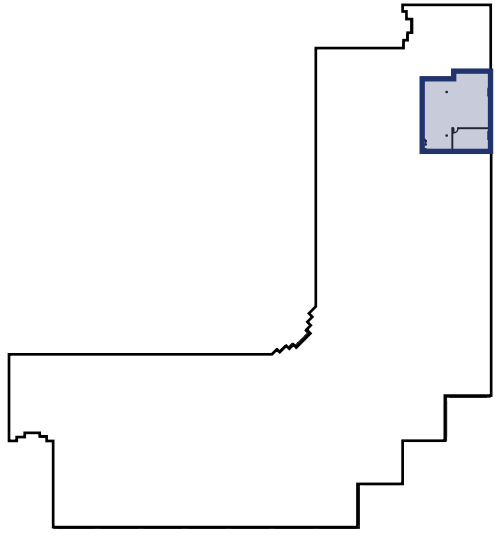


BUILDING II

SUITE 208



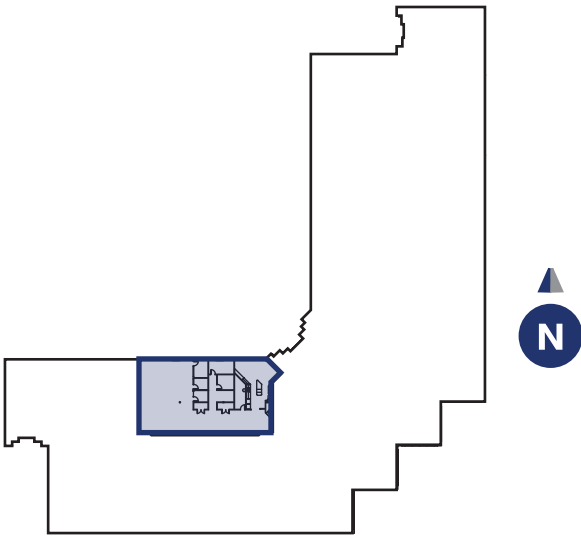
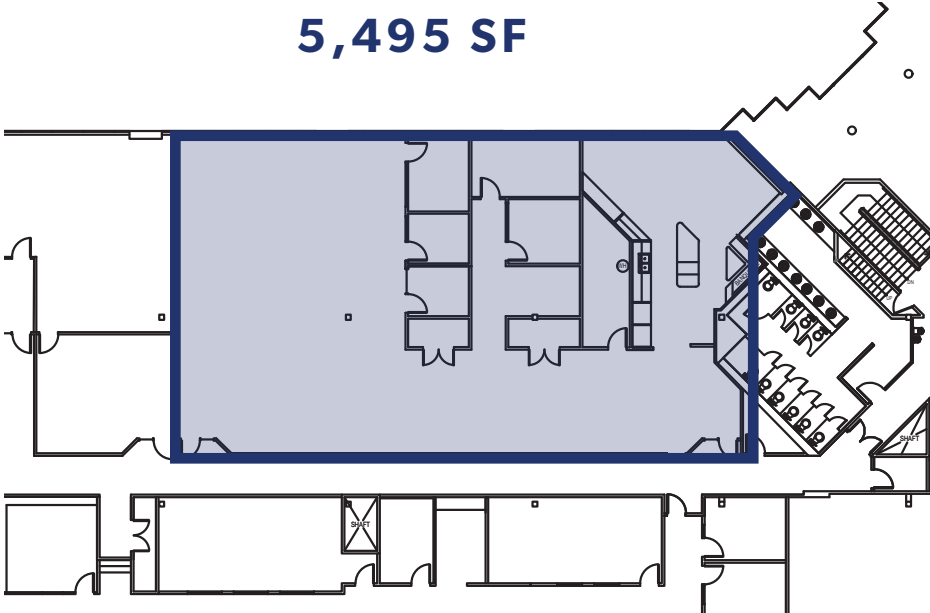
2,820 SF



BUILDING II

SUITE 230

5,495 SF



AERIAL



SEATTLE

SEATAC INTL AIRPORT

RENTON

BELLEVUE

TUKWILA

167

405

5

FEDERAL WAY

KENT

EMERALD DOWNS

AUBURN MUNICIPAL AIRPORT

167

18

167

AUBURN
CORPORATE CENTER

THE OUTLET
COLLECTION SEATTLE

18





1102

AUBURN

CORPORATE CENTER

1002 & 1102 15TH ST SW | AUBURN

MIKE HEMPHILL
(206) 550-4176
mhemphill@andoverco.com

JIM BISSET
(206) 769-3633
jbisset@andoverco.com