

# Clay Street **BUSINESS PARK I**

116 Clay St NW | Auburn, WA



**INDUSTRIAL SPACE  
FOR LEASE**

**6,533 SF Total**



**THE ANDOVER  
COMPANY, INC.**  
CORFAC INTERNATIONAL

**JACK CRANE**  
(206) 258-3159  
[jacklc@andoverco.com](mailto:jacklc@andoverco.com)

**JEFF CRANE**  
(206) 336-5336  
[jcrane@andoverco.com](mailto:jcrane@andoverco.com)

**BRIAN BRUININKS, CCIM**  
(206) 336-5324  
[bbruininks@andoverco.com](mailto:bbruininks@andoverco.com)



# PROPERTY HIGHLIGHTS

- Dock high and grade level served suites
- Convenient access to Hwy-167 and Hwy-18
- 24' clear height
- Fully sprinklered buildings
- Available 7/1/2024
- Contact brokers for rates



The information contained herein has been obtained from reliable sources, but is not guaranteed. A prospective buyer/tenant should verify each item relating to this property and all information contained herein.



**JACK CRANE**  
(206) 258-3159  
jacklc@andoverco.com

**JEFF CRANE**  
(206) 336-5336  
jcrane@andoverco.com

**BRIAN BRUININKS, CCIM**  
(206) 336-5324  
bbruininks@andoverco.com

# AVAILABLE SUITES

# Clay Street BUSINESS PARK I

116 Clay St NW | Auburn, WA

## Suite A1

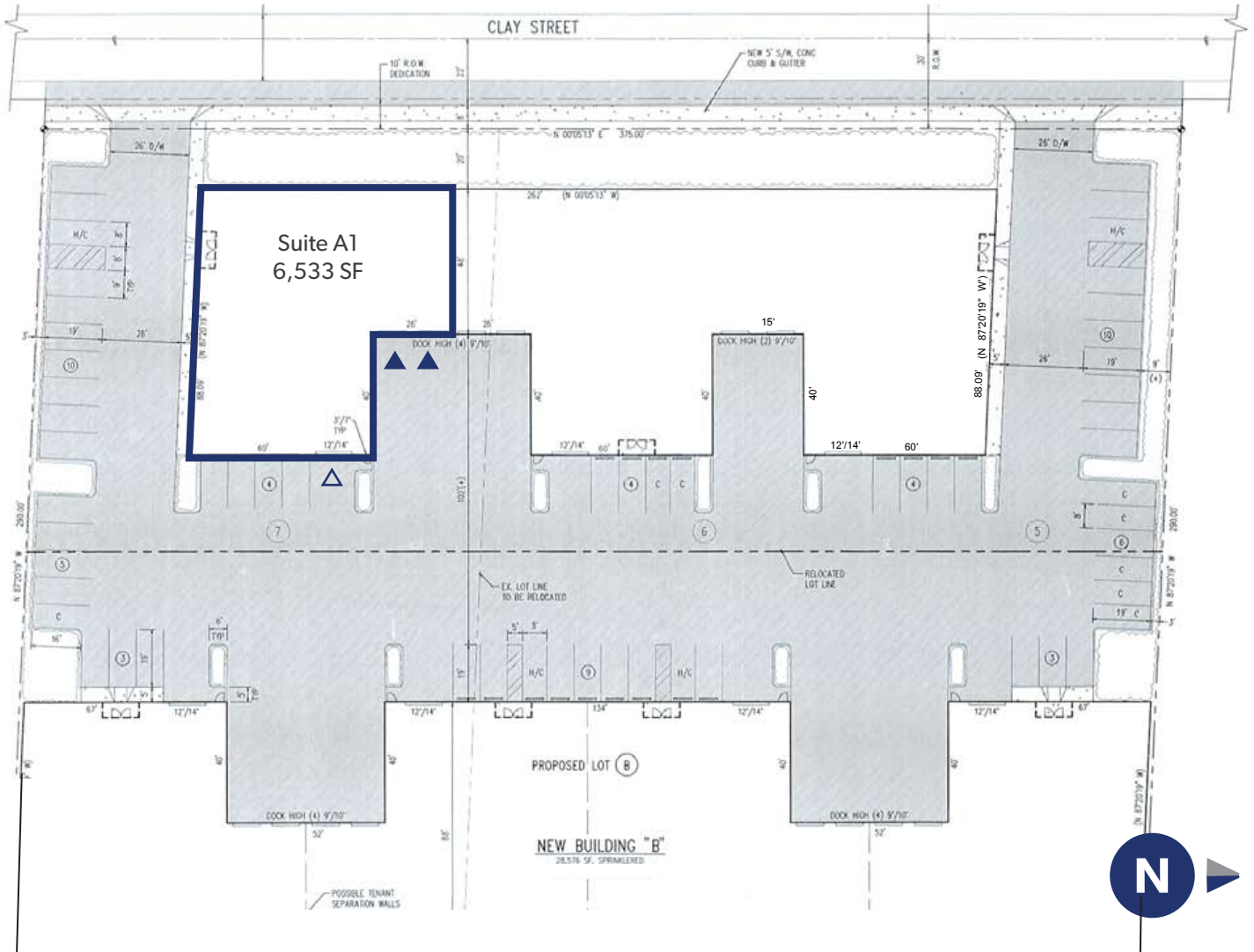
Total SF: **6,533 SF**

Office SF: **840 SF**

2 Dock High Doors

1 Grade Level Door

Available 7/1/2024



- ▲ Grade Level Doors
- ▲ Dock High Doors