

FEDERAL WAY

BUSINESS PARK N

33755 9TH AVE S
BUILDING D
FEDERAL WAY, WA

FOR SUBLEASE

4,095 SF TOTAL
(1,095 SF OFFICE)



PROPERTY HIGHLIGHTS

- 4,095 SF TOTAL (1,095 SF OFFICE)
- 1 GRADE LEVEL DOOR
- 12' CLEAR HEIGHT
- SUBLEASE RUNS THROUGH 11/30/2025
- MINUTES FROM I-5, HWY-18 AND HWY-167
- LIMITED FEDERAL WAY INDUSTRIAL PRODUCT
- AVAILABLE NOW
- \$6,000/MONTH INDUSTRIAL GROSS



JACK CRANE
(206) 446-6699
jacklc@andoverco.com

JEFF CRANE
(206) 949-4339
jcrane@andoverco.com

 **THE ANDOVER
COMPANY, INC.**
CORFAC INTERNATIONAL

FEDERAL WAY

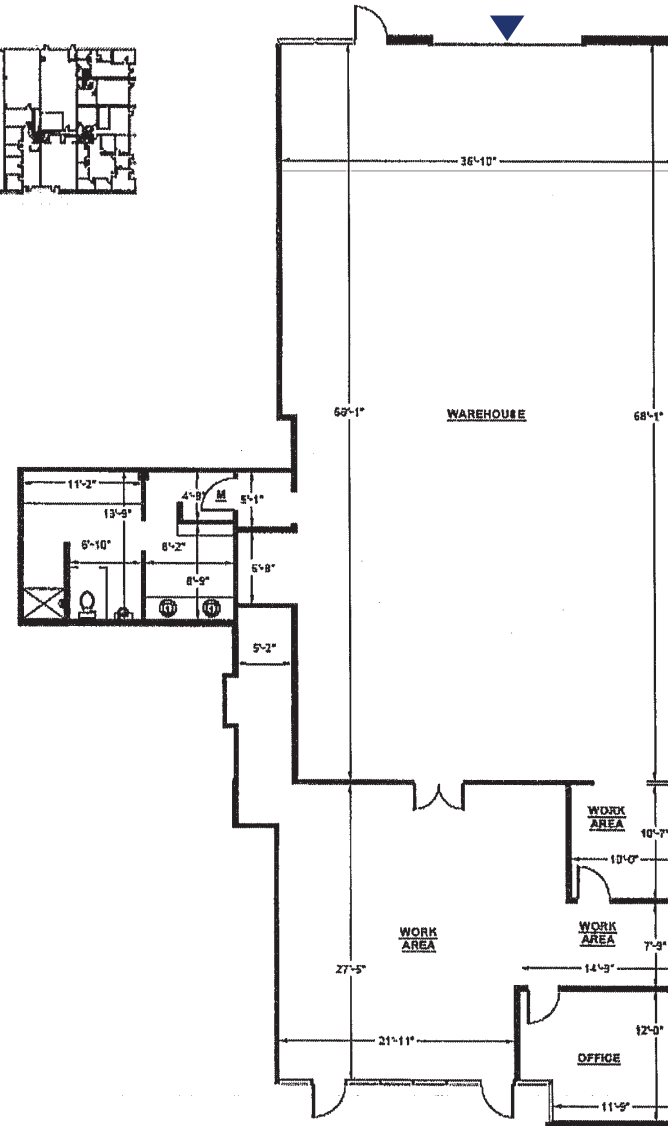
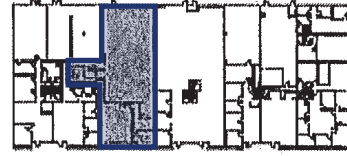
BUSINESS PARK N

BUILDING D | 4,095 SF TOTAL

1,095 SF OF OFFICE

KEY:

▲ Grade level door



JACK CRANE
(206) 446-6699
jacklc@andoverco.com

JEFF CRANE
(206) 949-4339
jcrane@andoverco.com

