

OFFICE SPACE

WITH SMALL WAREHOUSE & YARD

6016 204TH ST SW
SUITE A
LYNNWOOD, WA

FOR LEASE

2,354 SF TOTAL



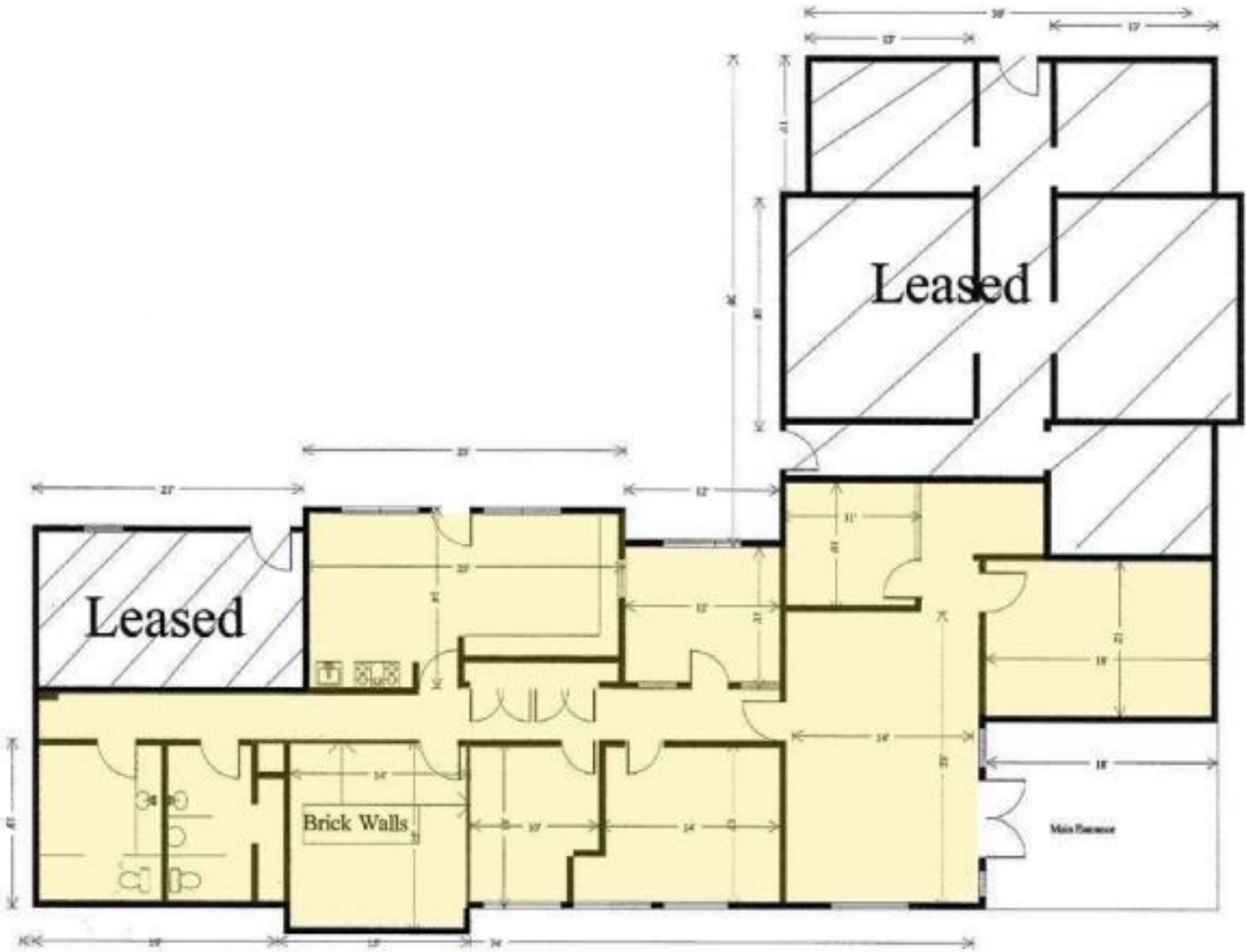
PROPERTY HIGHLIGHTS

- OFFICE SPACE WITH SMALL WAREHOUSE AND FENCED YARD
- 2,354 SF OFFICE
- ASKING RATE \$19 PSF GROSS/MO.
- AMPLE PARKING

JOSH KLEIN
(206) 357-5486
jklein@andoverco.com

**THE ANDOVER
COMPANY, INC.**
CORFAC INTERNATIONAL

FLOOR PLAN



The information contained herein has been obtained from reliable sources, but is not guaranteed. A prospective buyer/tenant should verify each item relating to this property and all information contained herein.

JOSH KLEIN
 (206) 357-5486
 jklein@andoverco.com



PHOTOS



The information contained herein has been obtained from reliable sources, but is not guaranteed. A prospective buyer/tenant should verify each item relating to this property and all information contained herein.

JOSH KLEIN
(206) 357-5486
jklein@andoverco.com

**THE ANDOVER
COMPANY, INC.**
CORFAC INTERNATIONAL