

1016 E PIKE

SEATTLE, WA | CREATIVE OFFICE SPACE

3,799 SF, 5,686 SF & 6,810 SF



 THE ANDOVER
COMPANY, INC.
CORFAC INTERNATIONAL

SHANE MAHVI
(206) 336-5338
smahvi@andoverco.com

MIKE HEMPHILL
(206) 550-4176
mhemphill@andoverco.com

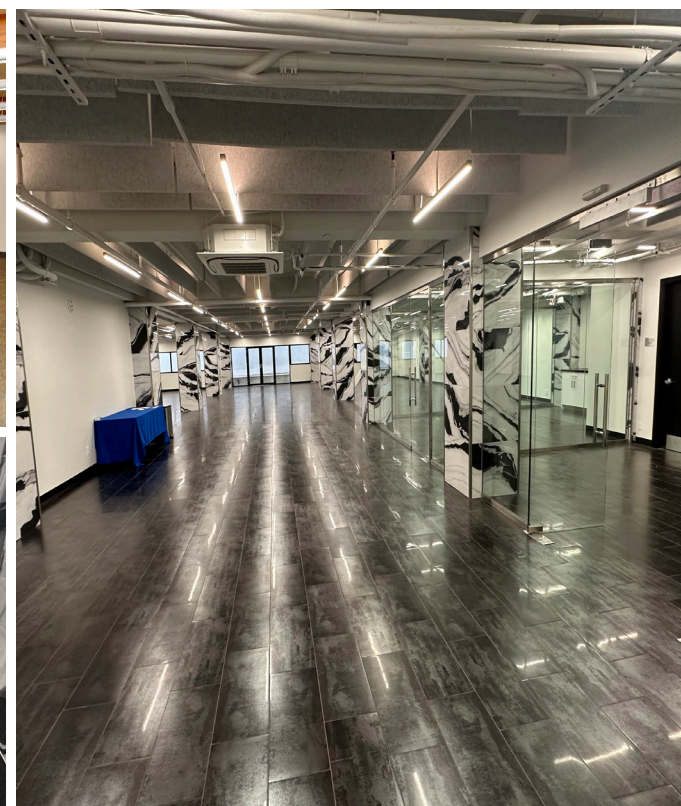
AVAILABLE NOW
FOR LEASE

1016 E PIKE

SEATTLE, WA | CREATIVE OFFICE SPACE

PROPERTY HIGHLIGHTS

- North facing suite provides newly built out space with open modern design and modern finishes including restrooms and kitchen.
- Newly remodeled entry lobby.
- Glass conference room.
- State-of-the-art lighting system that can be controlled wireless by your phone.
- Private outdoor balconies with gorgeous views of Seattle!
- Secure building with access controlled elevator, street entrance and double glass entry door.
- New multi-zone HVAC - with variable fresh air circulation.
- Sound insulation throughout.
- Building signage available.



LOWER LEVEL BASEMENT

5,686 SF



Great for creative/recreational space.



Elevator and stairs access.



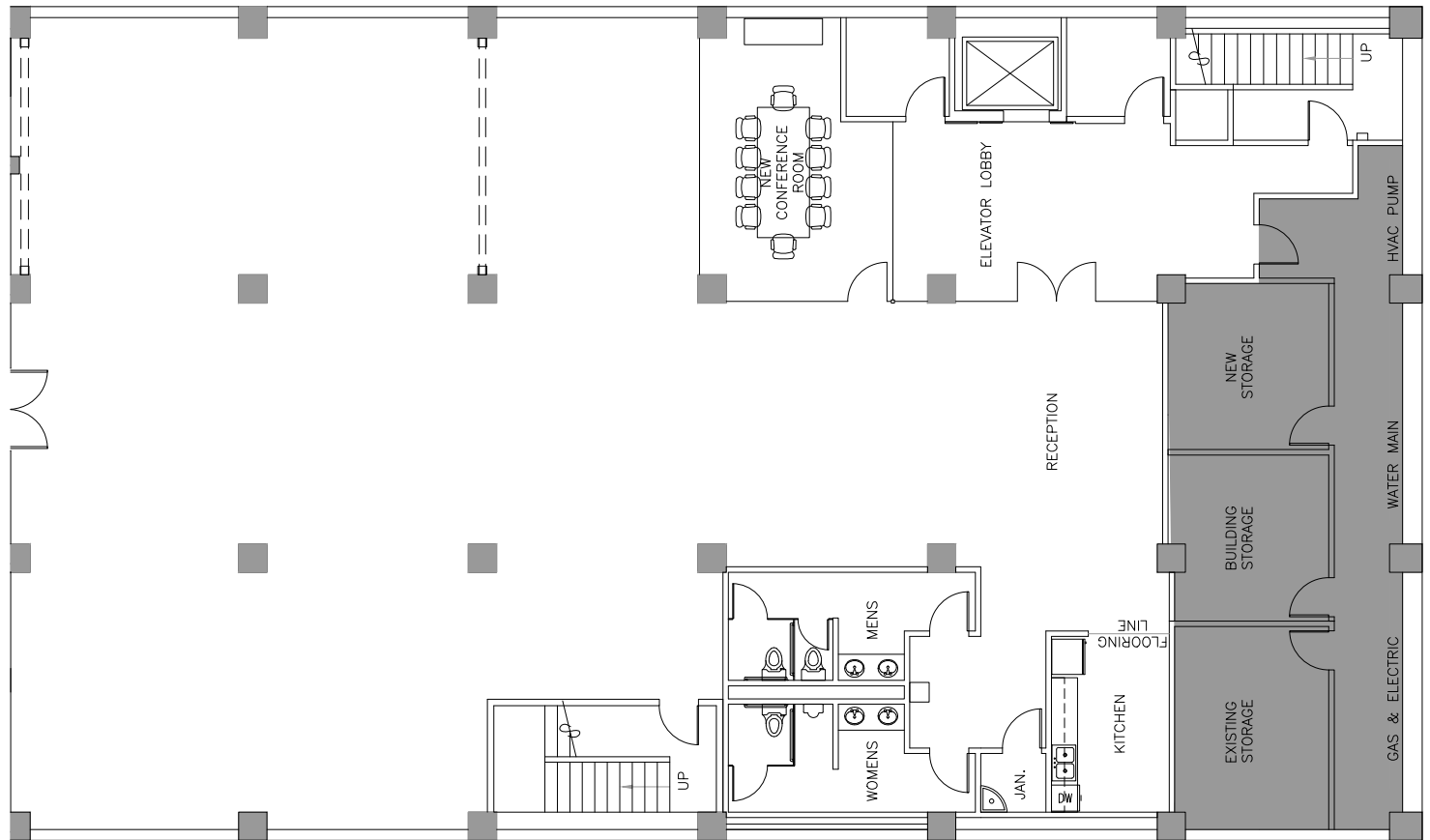
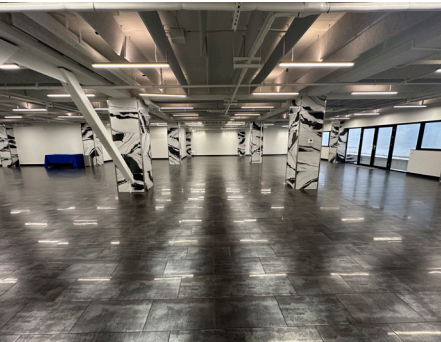
Recently renovated, high-end finishes.



Low cost/economical space for Capitol Hill.



Kitchenette/break area.



3RD FLOOR

6,810 SF Office Space



Creative office space.



Incoming renovations to the space.



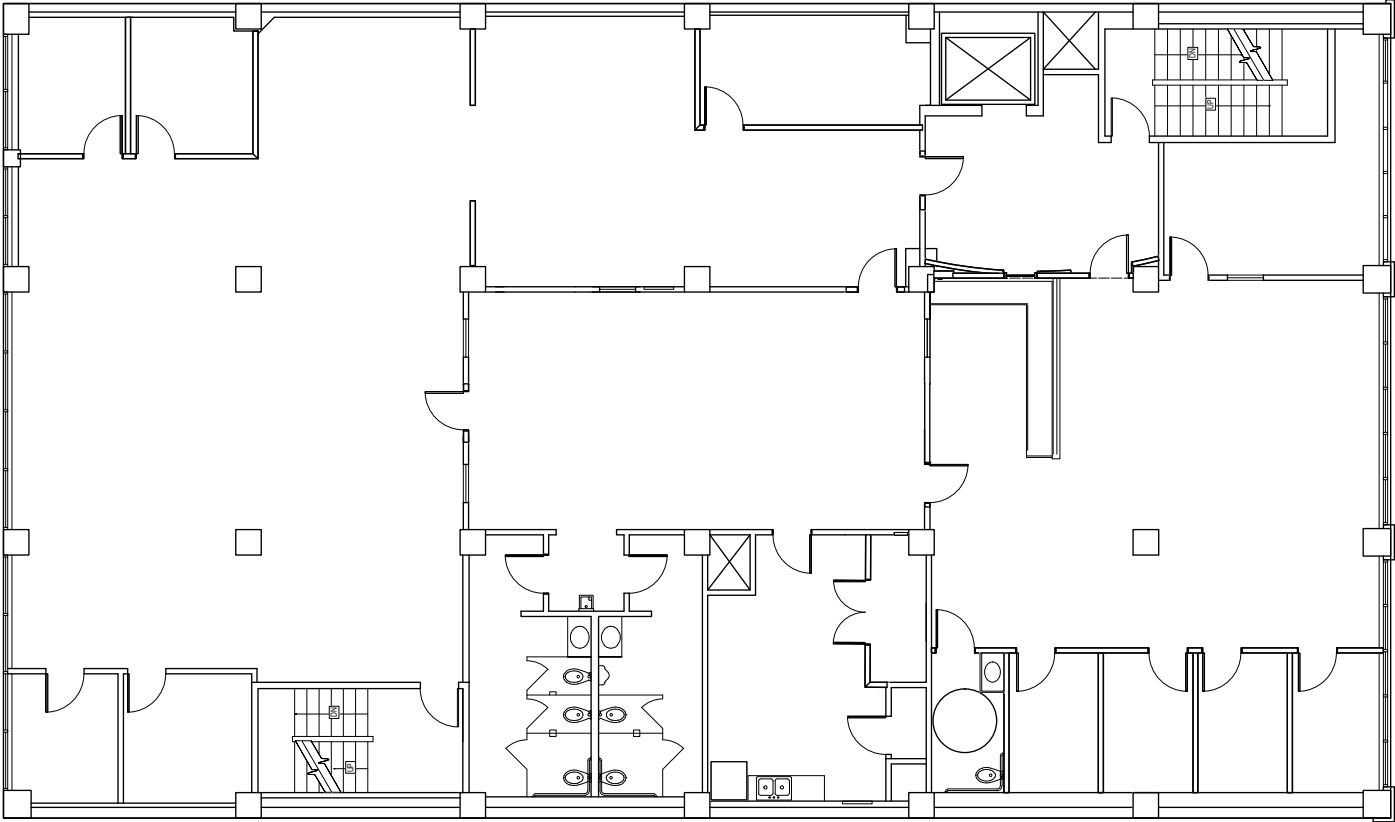
Flexible configurations, demisable space.



Landlord is open to making configurations.



Elevator and stairs access.



4TH FLOOR

3,799 SF Office Space



Top floor space, can support creative or executive office uses.



Tons of windows and natural light.



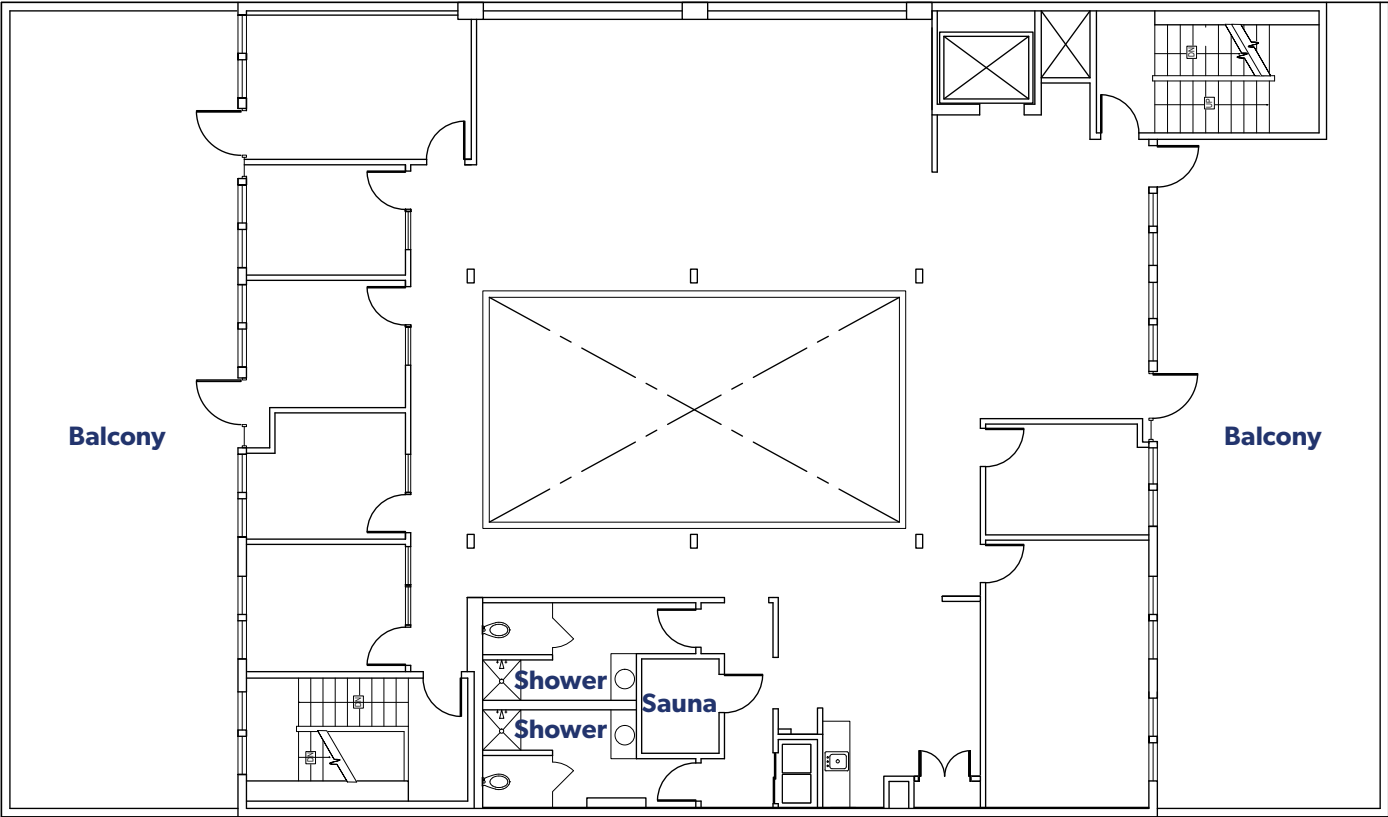
Elevator and stairs access.



Landlord is open to making configurations.



Balconies and in-suite showers and sauna.



4TH FLOOR + BALCONY

1016 EAST PIKE

3RD FLOOR

AHE PHARMACY

OUT OF THE CLOSET
THRIFT STORES

LIFELONG

FREE HIV TESTING

DONATION DROP OFF Benefiting AIDS Healthcare Foundation

MAP

The information contained herein has been obtained from reliable sources, but is not guaranteed. A prospective buyer/tenant should verify each item relating to this property and all information contained herein.



Unique office space in the heart of Capitol Hill



Private outdoor area accessed only through the suite



Walking distance to nearby amenities



1016 EAST PIKE

THE PHARMACY

OUT OF THE CLOSET
THRIFT STORES

LIFELONG

1016 E PIKE
SEATTLE, WA | CREATIVE OFFICE SPACE