

# WINDERMERE PLAZA



EXCLUSIVELY REPRESENTED BY **THE ANDOVER COMPANY**

**MIKE HEMPHILL**  
(206) 550-4176  
mhemphill@andoverco.com

**JEFF CRANE**  
(206) 336-5336  
jcrane@andoverco.com

**JACK CRANE**  
(206) 258-3159  
jacklc@andoverco.com

 **THE ANDOVER  
COMPANY, INC.**  
CORFAC INTERNATIONAL

# OVERVIEW

---

Windermere Plaza is an outstanding 20,122 SF Class C office building to house your employees. Your company will find employee recruiting and retention strengthened at this prominent project in Kent East Hill.

- Main lobby offers a modern quality image.
- All spaces have large windows and lots of glass line that provides plenty of natural light that creates a more productive work environment.
- Plentiful free 4.5/1,000 SF parking ratio.
- Enjoy the pleasant quiet sounds of birds chirping on this gorgeous forested site.
- State-of-the-art telecommunication service through CenturyLink and Comcast Business Cable.
- Metro bus route comes within one block of the building along SE 240<sup>th</sup> and 132<sup>nd</sup> SE.
- Starbucks Cafe and QFC is next door, along with numerous restaurants and AnyTime Fitness.



13106 SE 240<sup>TH</sup> ST, KENT, WA 98031



WINDERMERE PLAZA

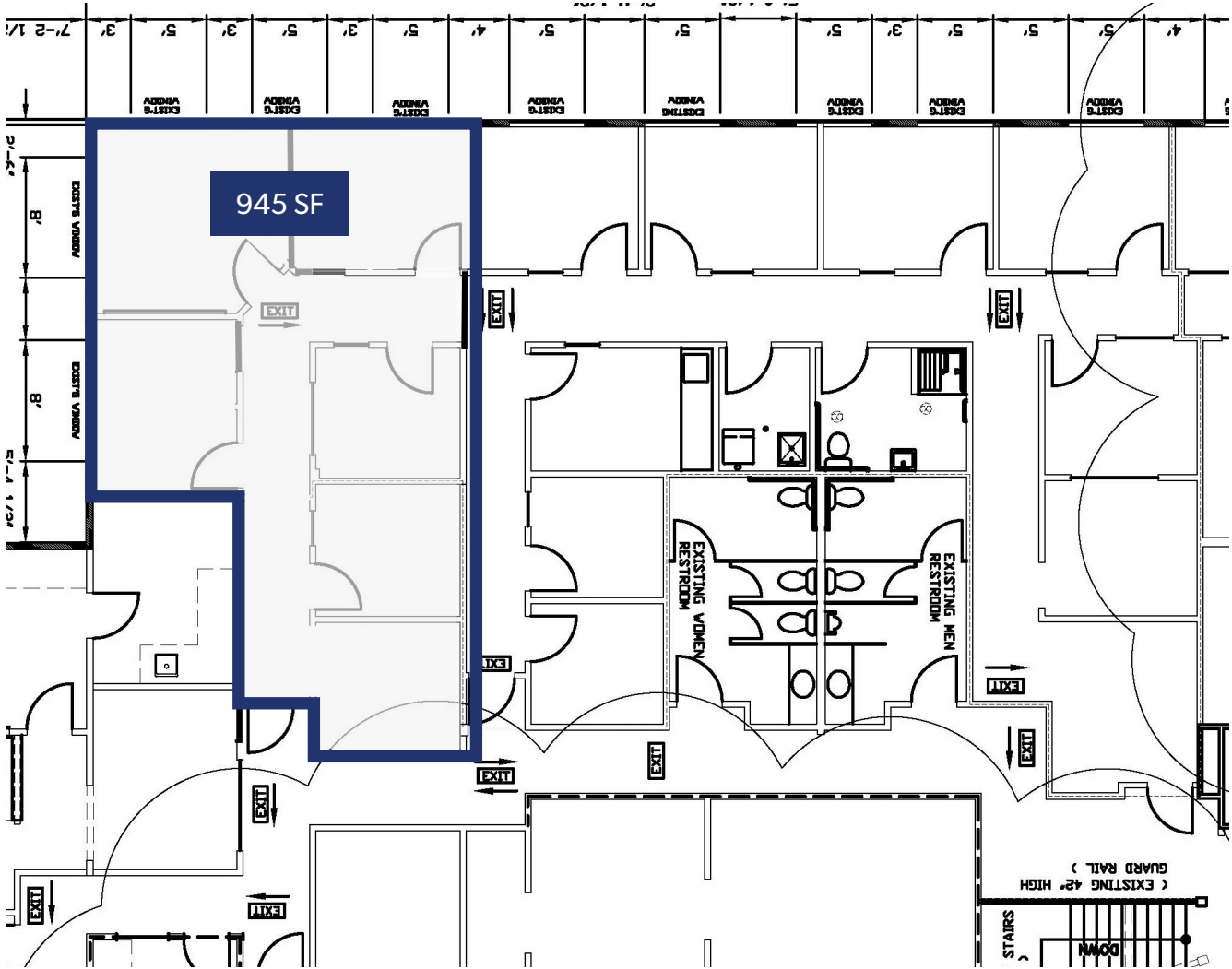
# AVAILABLE SPACE

Windermere Plaza offers suites in a variety of sizes for lease. Please see below for currently available spaces.

SUITE	RENTABLE SF	RENTAL RATE/RSF (NNN)	COMMENTS
205	945	\$18.00 RSF/YR, NNN	Five (5) private offices and reception area



# SUITE 205 FLOOR PLAN



# AREA AERIAL



# BIRD'S EYE AERIAL

---





# WINDERMERE PLAZA

EXCLUSIVELY REPRESENTED BY  
**THE ANDOVER COMPANY**

---

**MIKE HEMPHILL**

(206) 550-4176

[mhemphill@andoverco.com](mailto:mhemphill@andoverco.com)

**JEFF CRANE**

(206) 336-5336

[jcrane@andoverco.com](mailto:jcrane@andoverco.com)

**JACK CRANE**

(206) 258-3159

[jacklc@andoverco.com](mailto:jacklc@andoverco.com)



**THE ANDOVER  
COMPANY, INC.**

---

**CORFAC INTERNATIONAL**