

RIDGEWOOD CENTER

33650 6TH AVE S | FEDERAL WAY, WA

FOR LEASE

3,590 SF AVAILABLE



THE ANDOVER
COMPANY, INC.

CORFAC INTERNATIONAL

SHANE MAHVI, SIOR

(206) 336-5338








smahvi@andoverco.com

BRIAN BRUININKS, CCIM

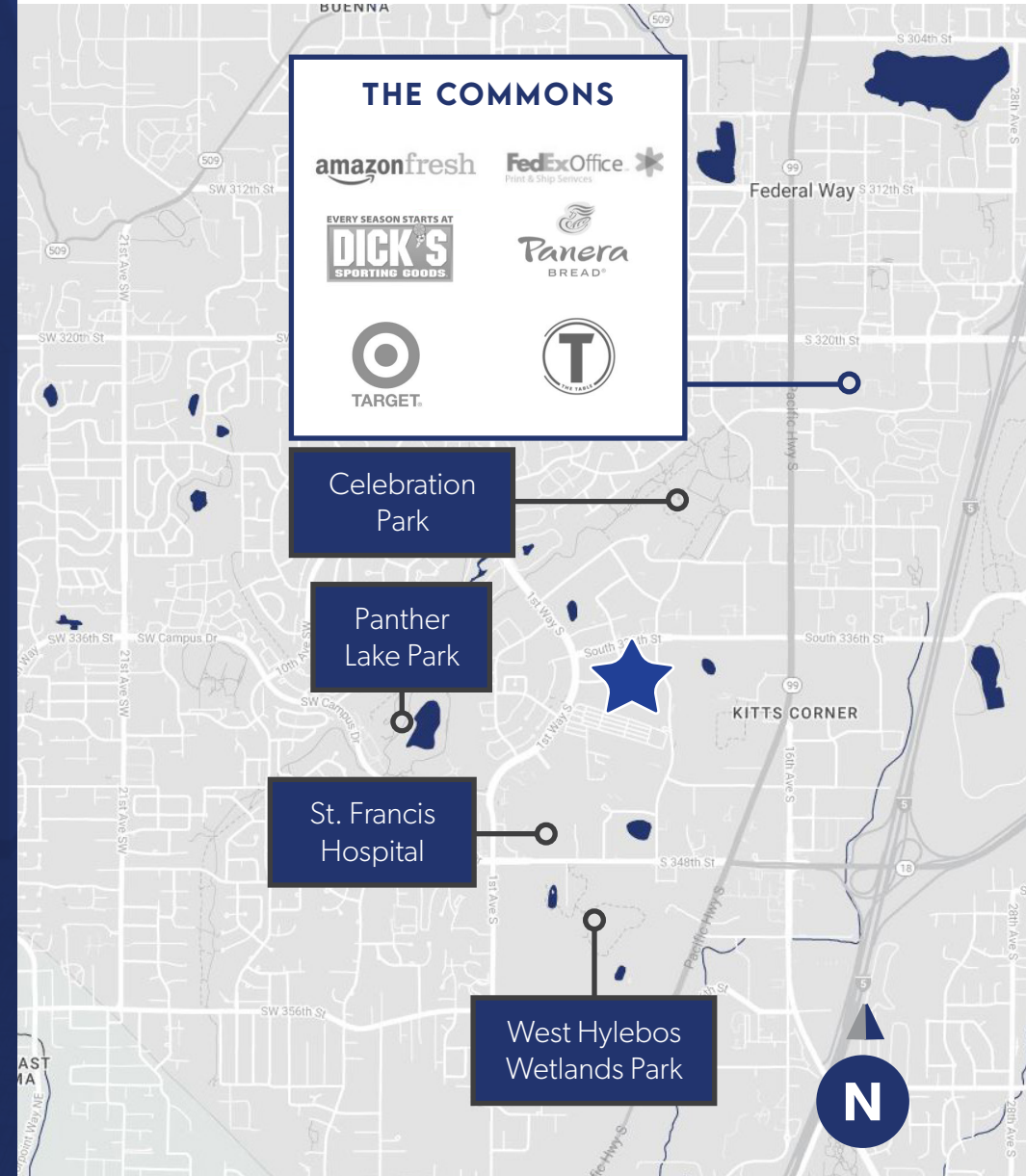
(206) 336-5324

bbruininks@andoverco.com

PROPERTY HIGHLIGHTS

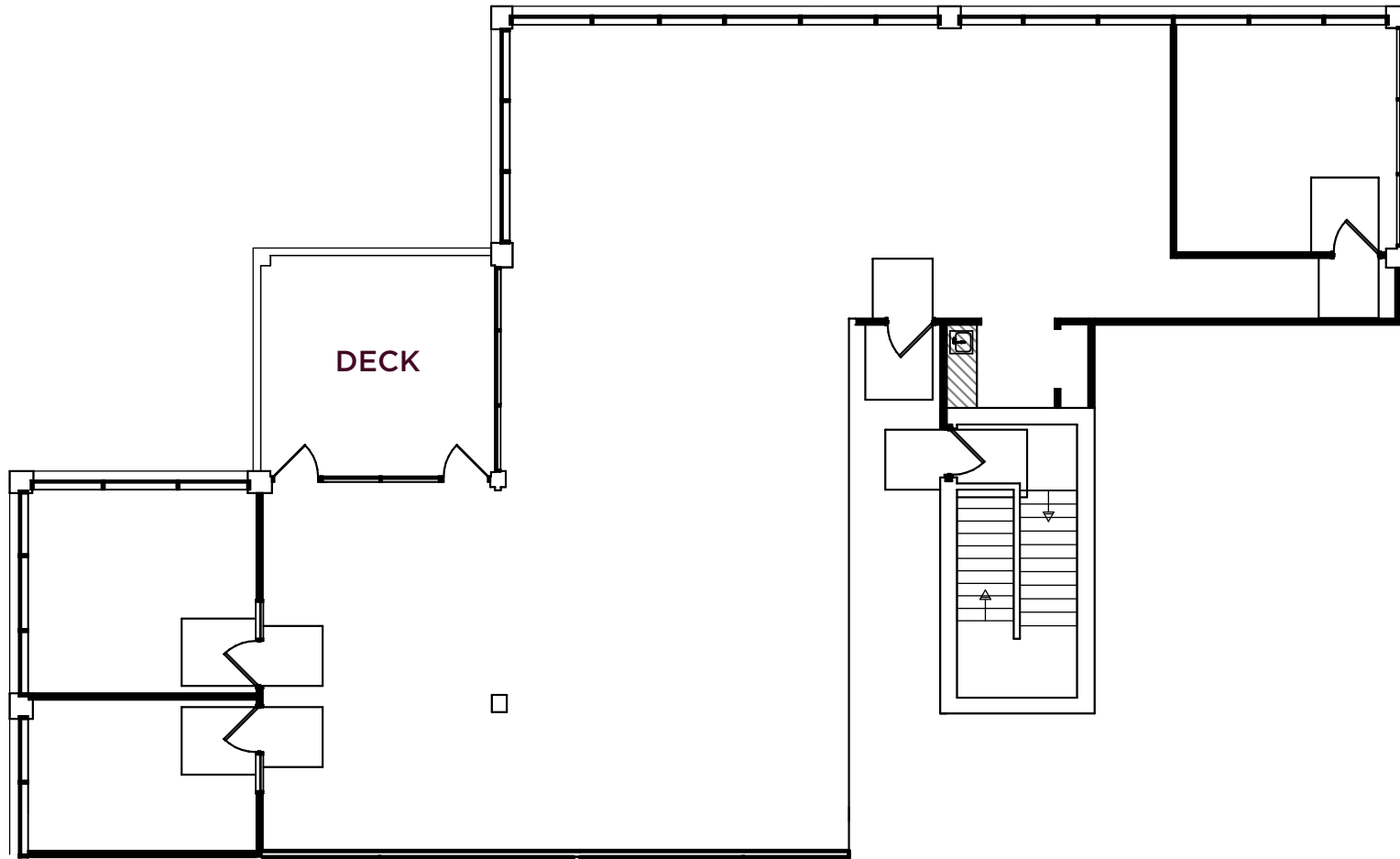
-  AMPLE FREE SURFACE PARKING
-  COVERED PARKING IS FREE AT 1/1,000 RSF
-  CLOSE PROXIMITY TO THE COMMONS SHOPPING MALL & ST. FRANCIS HOSPITAL
-  LOCATED ON MAIN ARTERIAL; I-5 AND S/99
-  PROJECT AMENITIES INCLUDE CONFERENCE ROOM AND FITNESS CENTER
-  STORAGE AVAILABLE
-  INCOMING RENOVATIONS TO LOBBY AND COMMON AREAS

The information contained herein has been obtained from reliable sources, but is not guaranteed. A prospective buyer/tenant should verify each item relating to this property and all information contained herein.



SUITE
210

3,590 SF TOTAL



PROPERTY PHOTOS

