

RIVERTON

PROFESSIONAL CENTER

2901 S 128TH ST | TUKWILA, WA

OFFICE SPACE

FOR LEASE

926 SF

1,434 SF

1,760 SF



THE ANDOVER
COMPANY, INC.

CORFAC INTERNATIONAL

SHANE MAHVI, SIOR
(858) 442-0441
smahvi@andoverco.com

JACK CRANE
(206) 446-6699
jacklc@andoverco.com

JEFF CRANE
(206) 949-4339
jcrane@andoverco.com

PROPERTY HIGHLIGHTS

- Address: 2901 S 128th St, Tukwila, WA
- Multiple configurations, spaces can be combined or leased separately
- \$18/SF/Yr, Full Service
- Built out office space with kitchenette and private restrooms
- Ample parking
- Local ownership
- Move in ready, available now
- Lobby with tons of natural light
- Strategic Tukwila location with great access to nearby freeways



FLOOR PLANS

Suite A

Total SF: **926 SF**

- 4 Private offices
- Storage room
- Bathroom
- Kitchenette
- Available now

Suite B

Total SF: **1,760 SF**

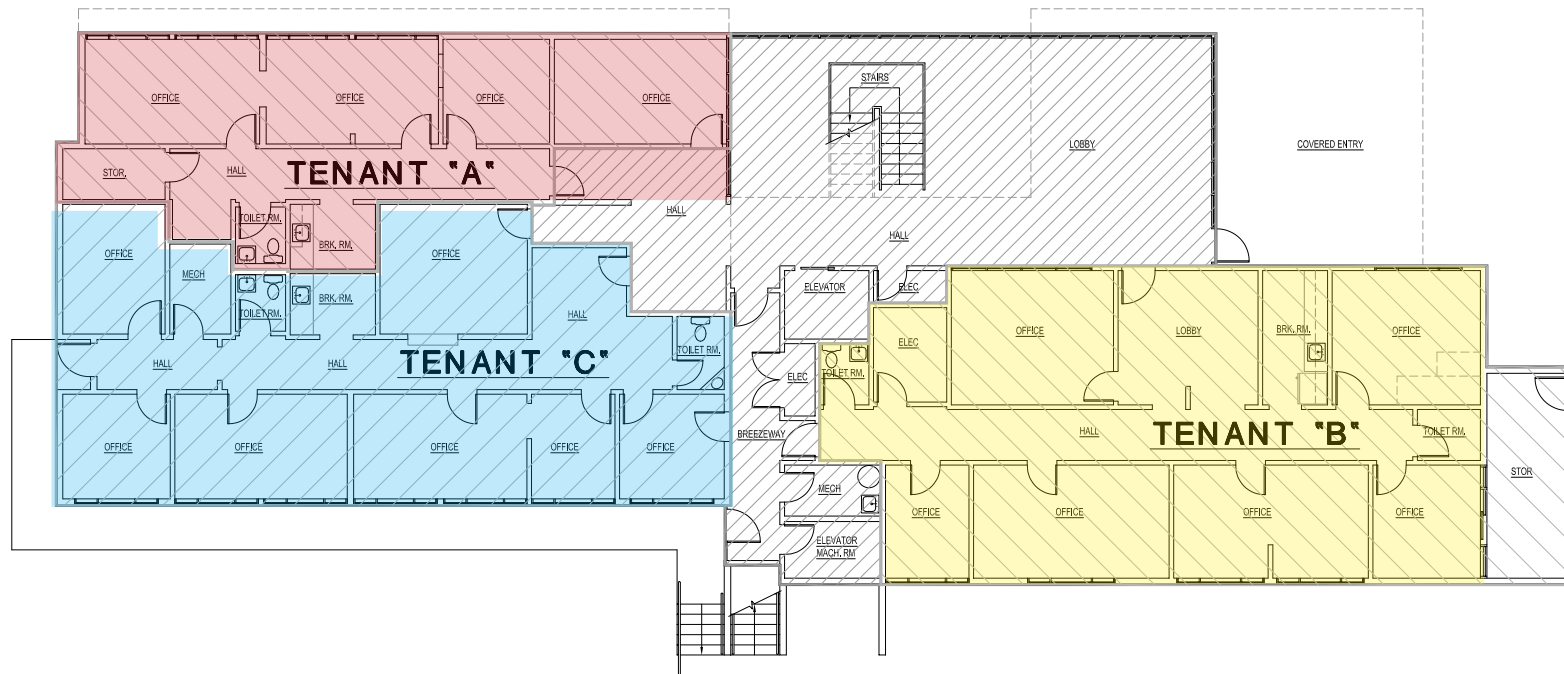
- 7 Private offices
- Lobby entrance
- 2 Restrooms
- Kitchenette
- Available now

Suite C

Total SF: **1,434 SF**

- 7 Private offices
- 2 Bathrooms
- Kitchenette
- Available now

*Suite A and C can be combined, totalling 2,360 SF



PHOTOS & MAP





RIVERTON

PROFESSIONAL CENTER

2901 S 128TH ST | TUKWILA, WA

SHANE MAHVI, SIOR
(858) 442-0441
smahvi@andoverco.com

JACK CRANE
(206) 446-6699
jacklc@andoverco.com

JEFF CRANE
(206) 336-5336
jcrane@andoverco.com