

RUSSELL PLAZA

33600 6th Ave S | Federal Way, WA

MULTIPLE SPACES RANGING FROM
987 SF - 4,032 SF



 THE ANDOVER
COMPANY, INC.
CORFAC INTERNATIONAL

SHANE MAHVI, SIOR
(206) 336-5338
smahvi@andoverco.com

BRIAN BRUININKS, CCIM
(206) 336-5324
bbruininks@andoverco.com

FOR LEASE

RUSSELL PLAZA

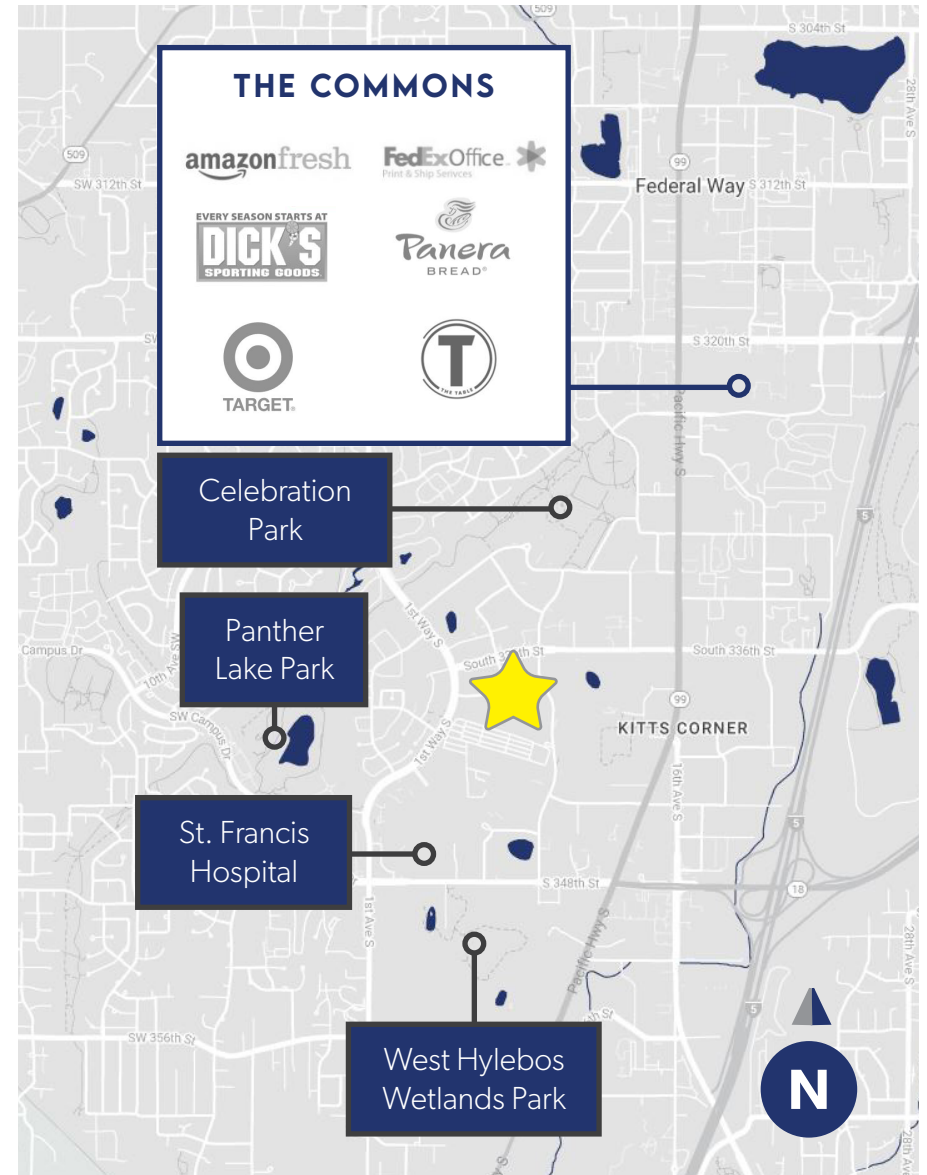
33600 6th Ave South
Federal Way, WA

PROPERTY HIGHLIGHTS

- CLASS "A" SUBURBAN OFFICE SPACE
- AMPLE FREE SURFACE PARKING
- PROJECT AMENITIES INCLUDE CONFERENCE ROOM AND FITNESS CENTER
- LOCATED ON MAIN ARTERIAL; I-5 AND HWY 99
- CLOSE PROXIMITY TO THE COMMONS SHOPPING MALL & ST. FRANCIS HOSPITAL

SPACES AVAILABLE

- SUITE 105: 4,032 SF
- SUITE 200: 3,697 SF
- SUITE 220: 1,954 SF
- SUITE 101: 1,572 SF
- SUITE 245: 987 SF



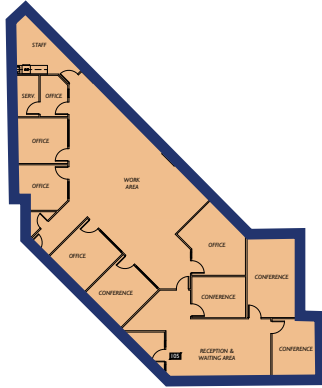
The information contained herein has been obtained from reliable sources, but is not guaranteed. A prospective buyer/tenant should verify each item relating to this property and all information contained herein.

SHANE MAHVI, SIOR
(206) 336-5338
smahvi@andoverco.com

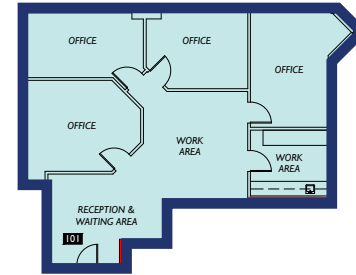
BRIAN BRUININKS, CCIM
(206) 336-5324
bbruininks@andoverco.com



SUITE 105 | 4,032 SF TOTAL



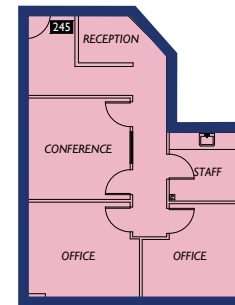
SUITE 101 | 1,572 SF TOTAL



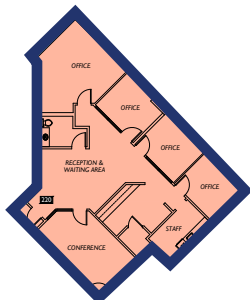
SUITE 200 | 3,697 SF TOTAL



SUITE 245 | 987 SF TOTAL



SUITE 220 | 1,954 SF TOTAL



SHANE MAHVI, SIOR
(206) 336-5338
smahvi@andoverco.com

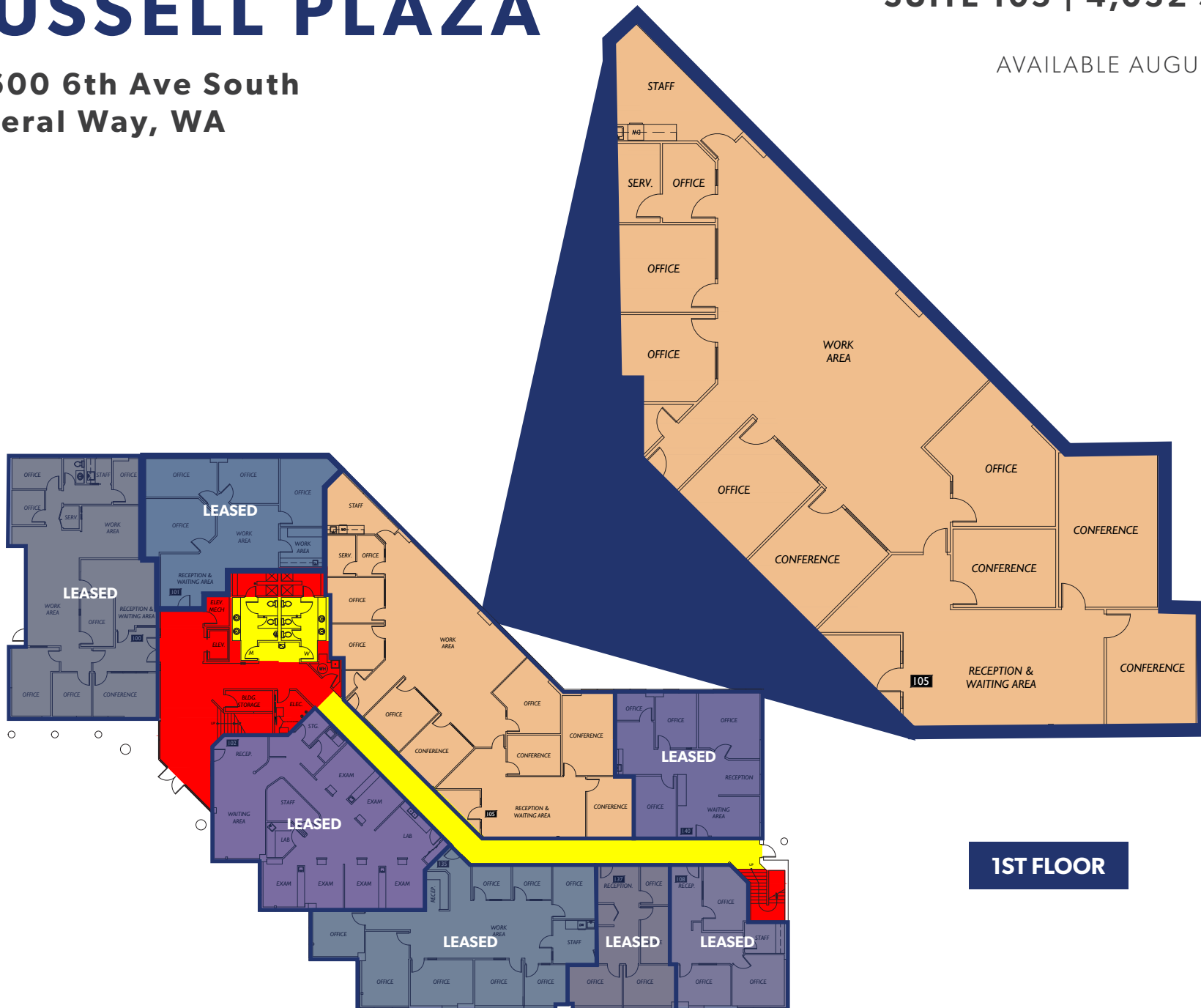
BRIAN BRUININKS, CCIM
(206) 336-5324
bbruininks@andoverco.com

RUSSELL PLAZA

33600 6th Ave South
Federal Way, WA

SUITE 105 | 4,032 SF TOTAL

AVAILABLE AUGUST 1ST, 2025

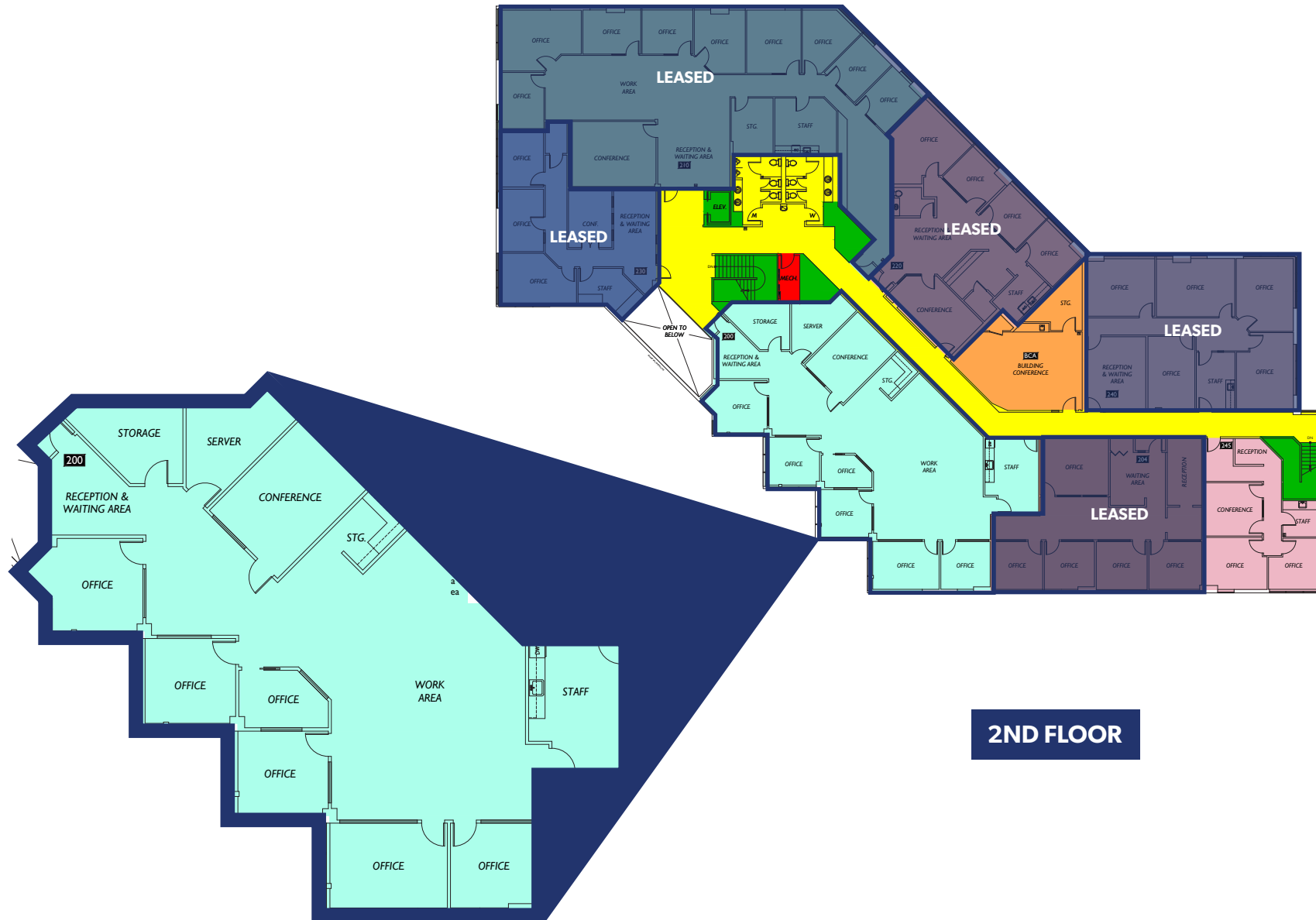


RUSSELL PLAZA

33600 6th Ave South
Federal Way, WA

SUITE 200 | 3,697 SF TOTAL

AVAILABLE NOW

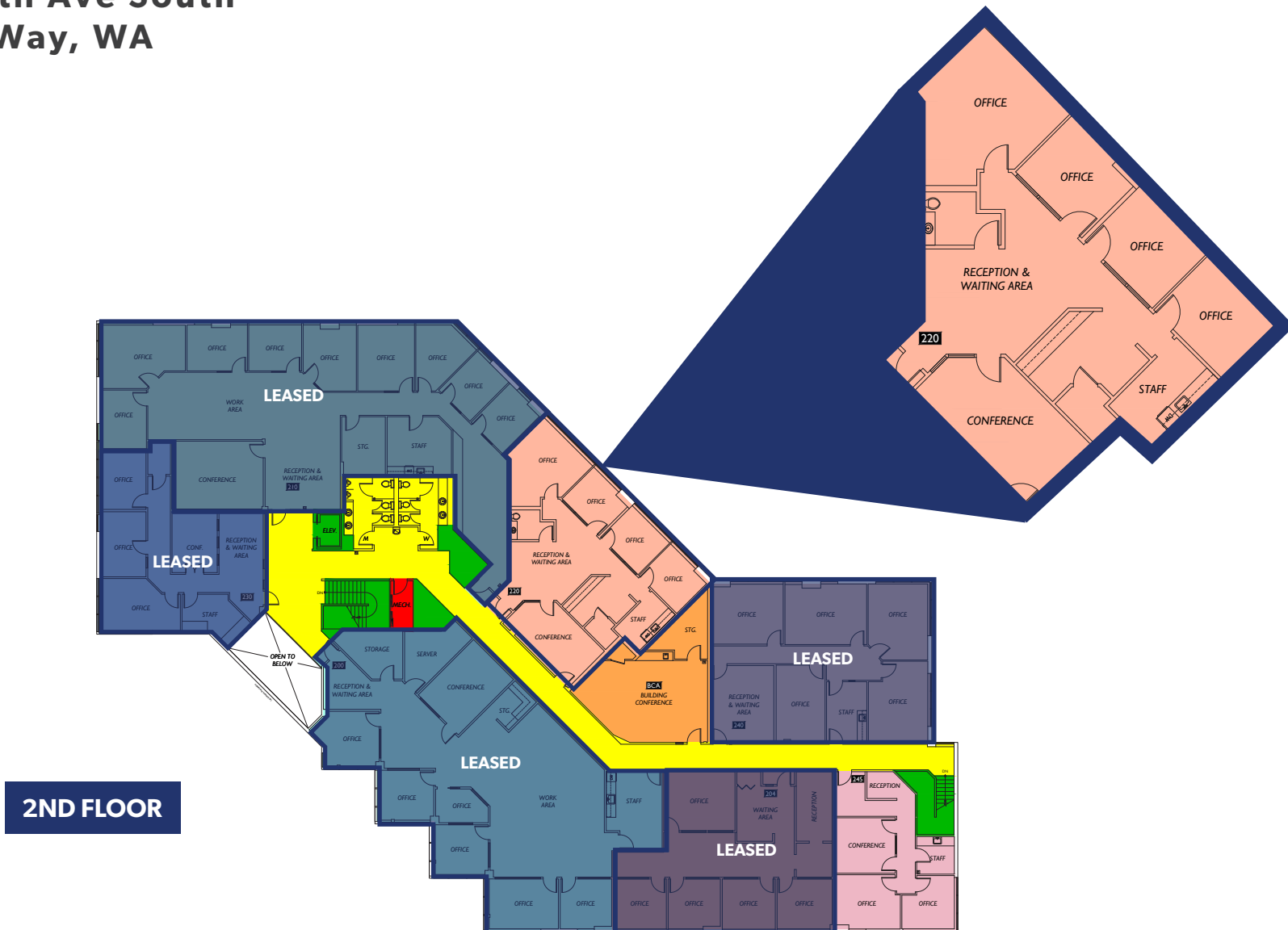


RUSSELL PLAZA

33600 6th Ave South
Federal Way, WA

SUITE 220 | 1,954 SF TOTAL

AVAILABLE NOW

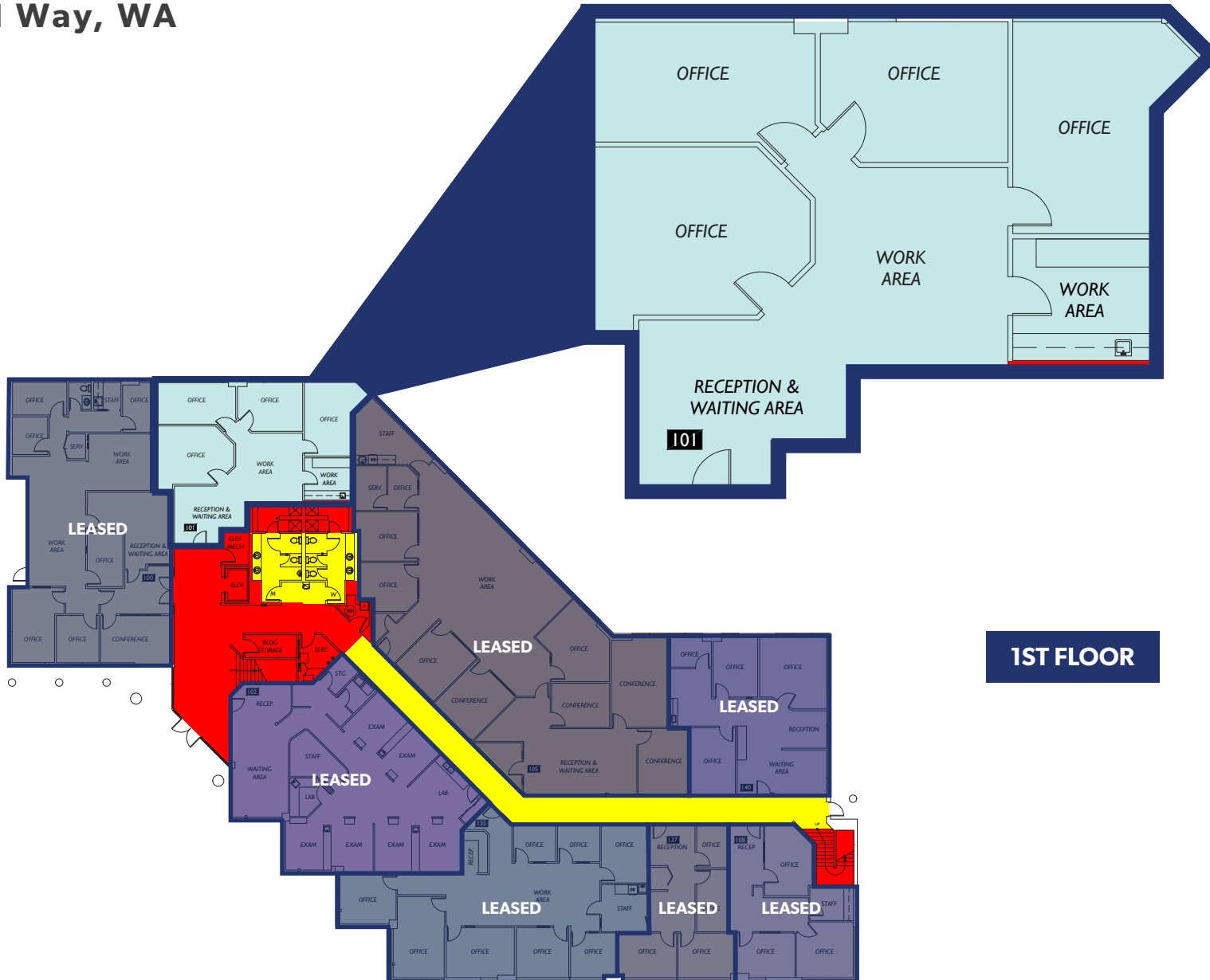


RUSSELL PLAZA

SUITE 101 | 1,572 SF TOTAL

AVAILABLE NOW

33600 6th Ave South
Federal Way, WA



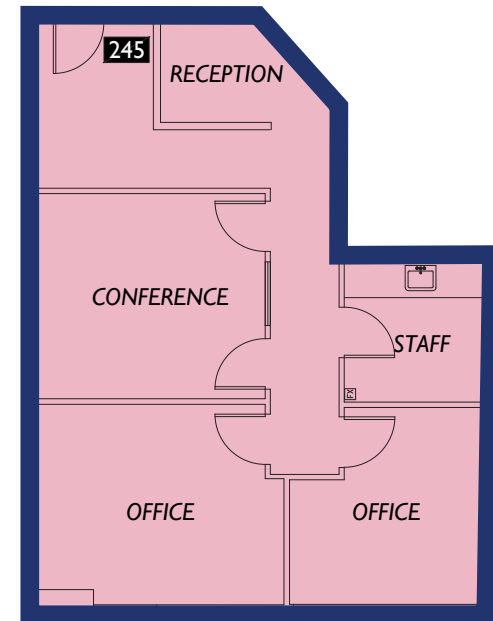
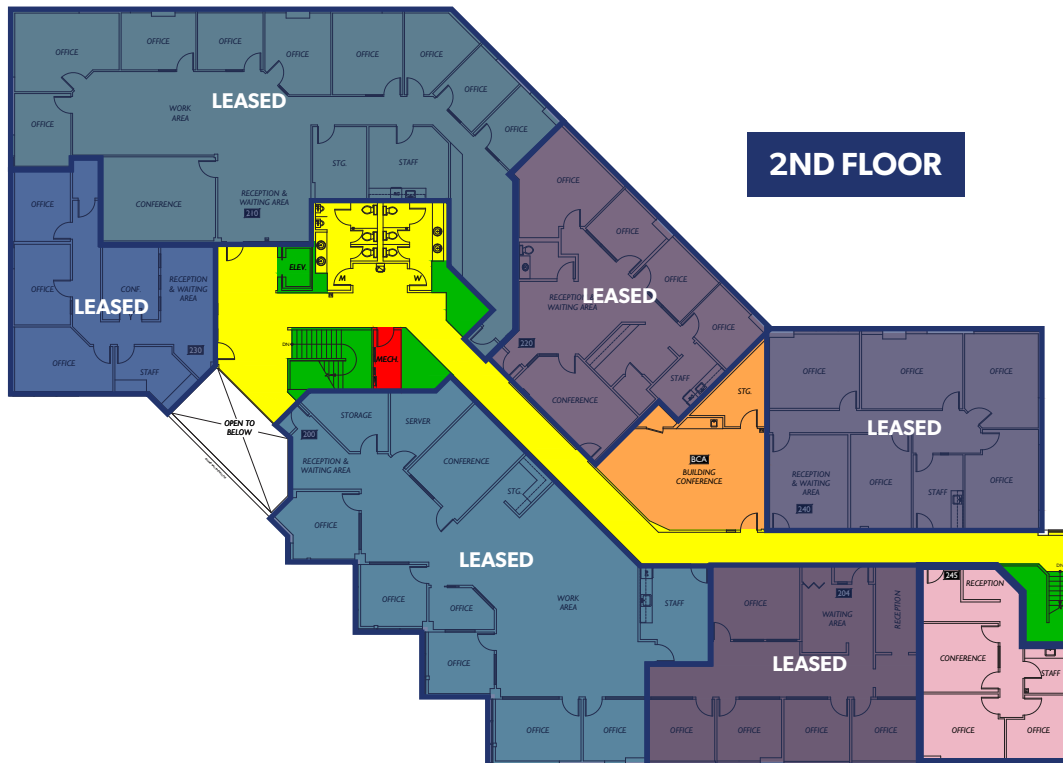
1ST FLOOR

RUSSELL PLAZA

33600 6th Ave South
Federal Way, WA

SUITE 245 | 987 SF TOTAL

AVAILABLE NOW



PHOTOS



The information contained herein has been obtained from reliable sources, but is not guaranteed. A prospective buyer/tenant should verify each item relating to this property and all information contained herein.

SHANE MAHVI, SIOR
 (206) 336-5338
 smahvi@andoverco.com

BRIAN BRUININKS, CCIM
 (206) 336-5324
 bbruininks@andoverco.com

