

663 S LUCILE ST

SEATTLE, WA

11,500 SF TOTAL
FOR SUBLEASE



PROPERTY HIGHLIGHTS

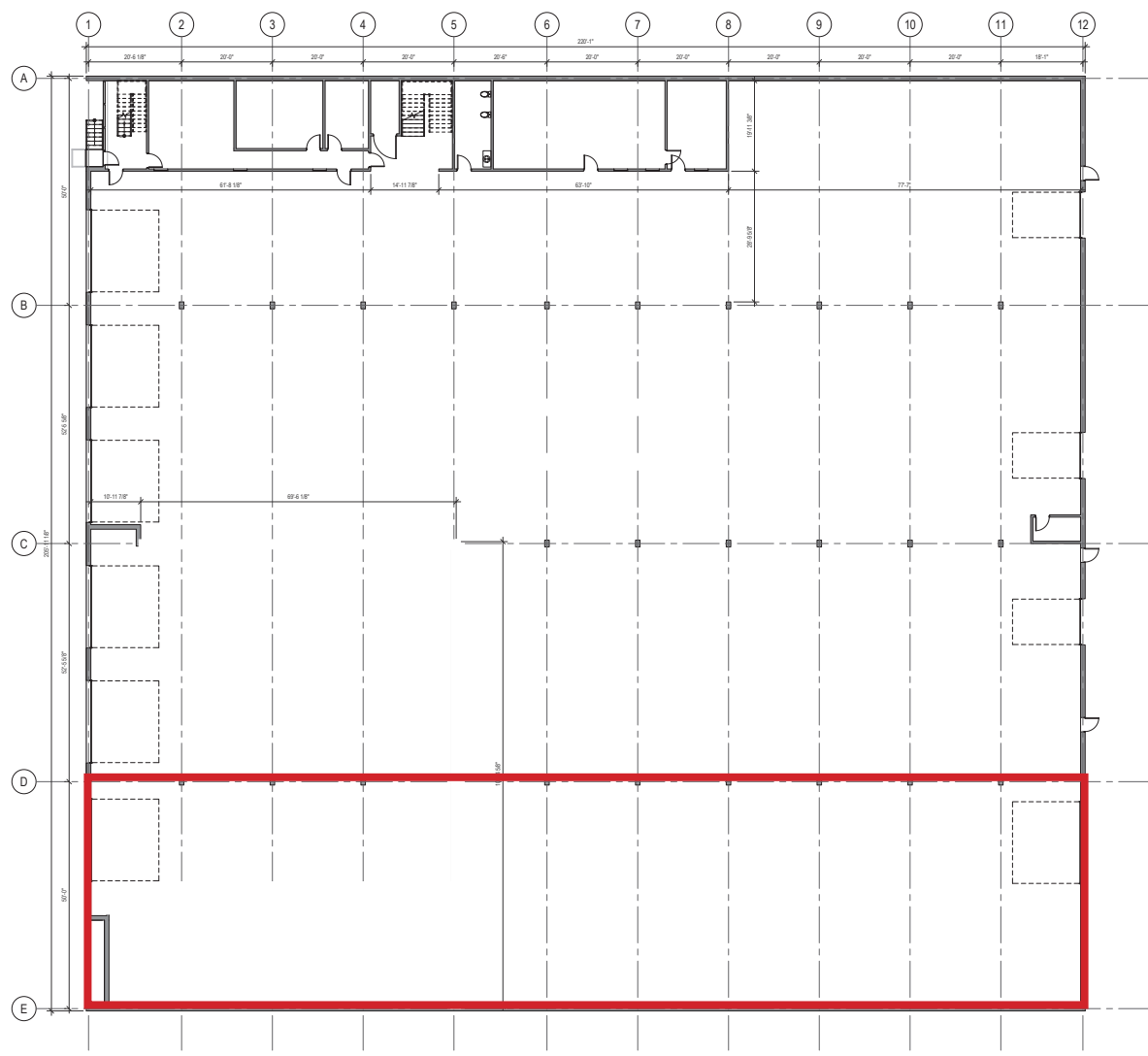
- CHEAPEST SUBLEASE IN TOWN!
- 11,500 SF
- 4 DOCK HIGH POSITIONS (2 PONY DOCKS)
- 1 GRADE LEVEL DOOR FOR OCCASIONAL ACCESS
- 24' CLEAR HEIGHT
- SPACE IS ONE (1) BAY APPROX. 50' X 220'
- HEAVY POWER
- EXCELLENT ACCESS TO SR-99 & I-5
- AVAILABLE NOW
- FLEXIBLE TERM AVAILABLE, SUBLEASE EXPIRES 3/31/2028
- PLEASE CONTACT BROKER FOR DETAILS

The information contained herein has been obtained from reliable sources, but is not guaranteed. A prospective buyer/tenant should verify each item relating to this property and all information contained herein.

ARNE SVENDSEN
(206) 947-2885
asvensen@andoverco.com

 **THE ANDOVER
COMPANY, INC.**
CORFAC INTERNATIONAL

FLOOR PLAN



The information contained herein has been obtained from reliable sources, but is not guaranteed. A prospective buyer/tenant should verify each item relating to this property and all information contained herein.

ARNE SVENDSEN
(206) 947-2885
asvensen@andoverco.com

 **THE ANDOVER
COMPANY, INC.**
CORFAC INTERNATIONAL