

# RUSSELL PLAZA

33600 6th Ave S | Federal Way, WA

MULTIPLE SPACES RANGING FROM  
**987 SF - 4,032 SF**



 THE ANDOVER  
COMPANY, INC.  
CORFAC INTERNATIONAL

**SHANE MAHVI, SIOR**  
(206) 336-5338  
smahvi@andoverco.com

**BRIAN BRUININKS, CCIM**  
(206) 336-5324  
bbruininks@andoverco.com

## FOR LEASE



# RUSSELL PLAZA

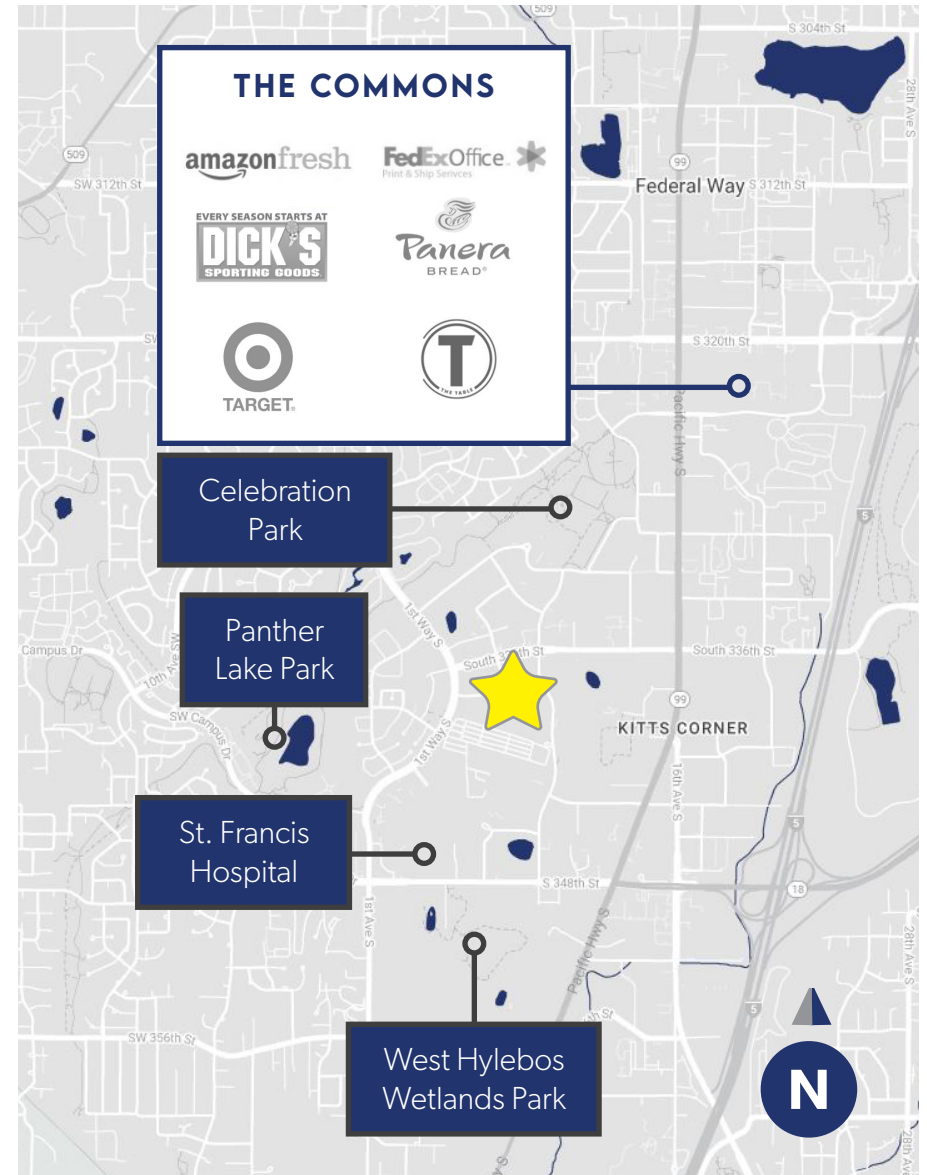
33600 6th Ave South  
Federal Way, WA

## PROPERTY HIGHLIGHTS

- CLASS "A" SUBURBAN OFFICE SPACE
- AMPLE FREE SURFACE PARKING
- PROJECT AMENITIES INCLUDE CONFERENCE ROOM AND FITNESS CENTER
- LOCATED ON MAIN ARTERIAL; I-5 AND HWY 99
- CLOSE PROXIMITY TO THE COMMONS SHOPPING MALL & ST. FRANCIS HOSPITAL

## SPACES AVAILABLE

- SUITE 105: 4,032 SF
- SUITE 200: 3,697 SF
- SUITE 245: 987 SF



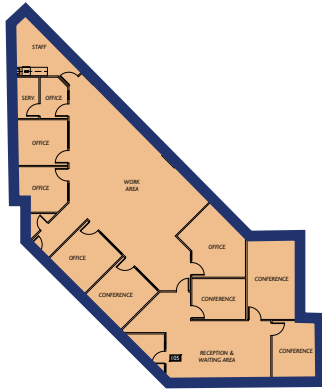
*The information contained herein has been obtained from reliable sources, but is not guaranteed. A prospective buyer/tenant should verify each item relating to this property and all information contained herein.*

**SHANE MAHVI, SIOR**  
(206) 336-5338  
smahvi@andoverco.com

**BRIAN BRUININKS, CCIM**  
(206) 336-5324  
bbruininks@andoverco.com



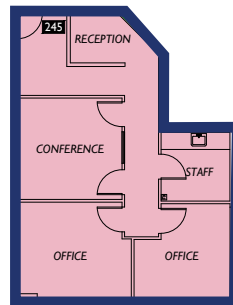
## SUITE 105 | 4,032 SF TOTAL



## SUITE 200 | 3,697 SF TOTAL



## SUITE 245 | 987 SF TOTAL



**SHANE MAHVI, SIOR**  
(206) 336-5338  
smahvi@andoverco.com

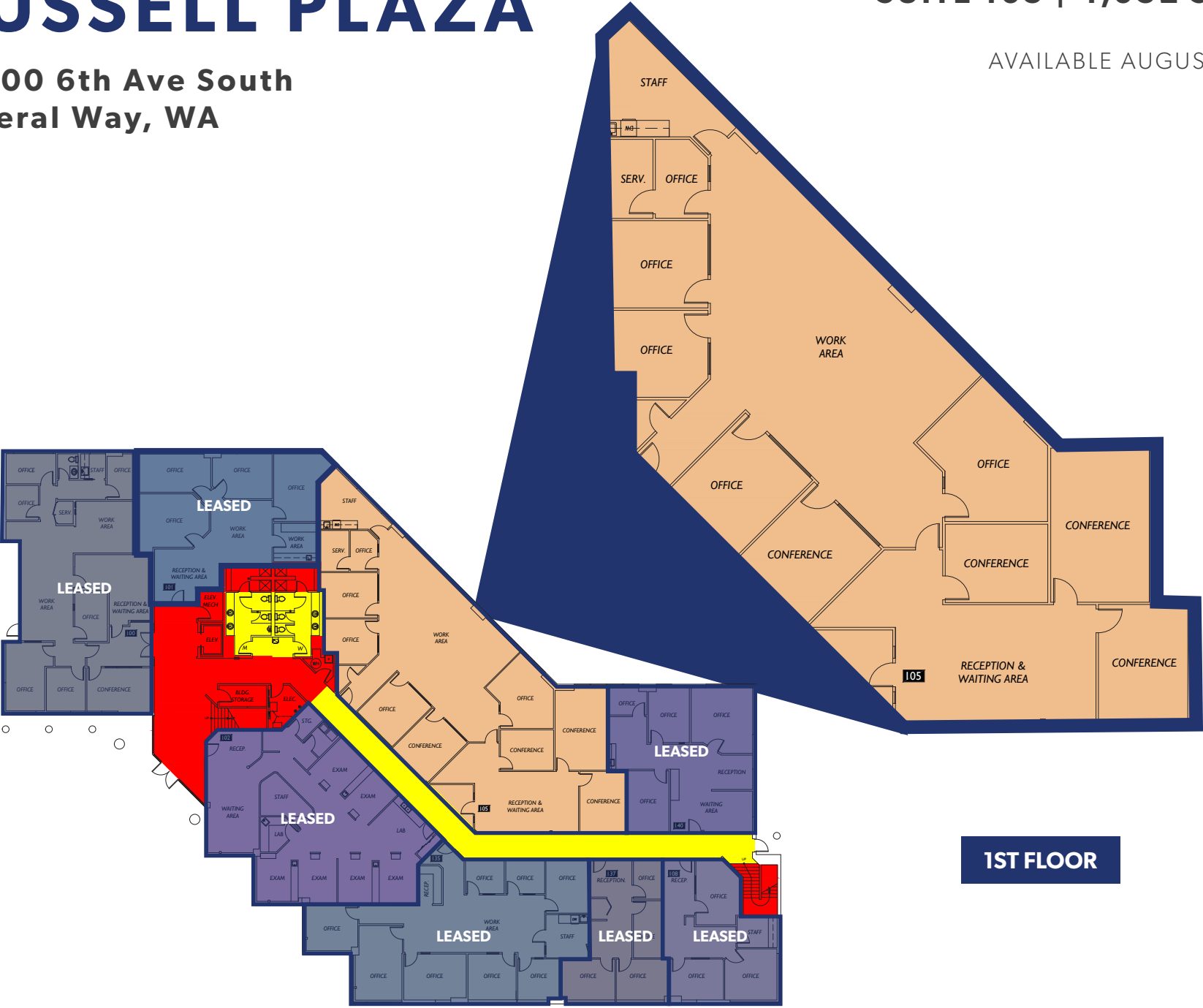
**BRIAN BRUININKS, CCIM**  
(206) 336-5324  
bbruininks@andoverco.com

# RUSSELL PLAZA

33600 6th Ave South  
Federal Way, WA

SUITE 105 | 4,032 SF TOTAL

AVAILABLE AUGUST 1ST, 2025



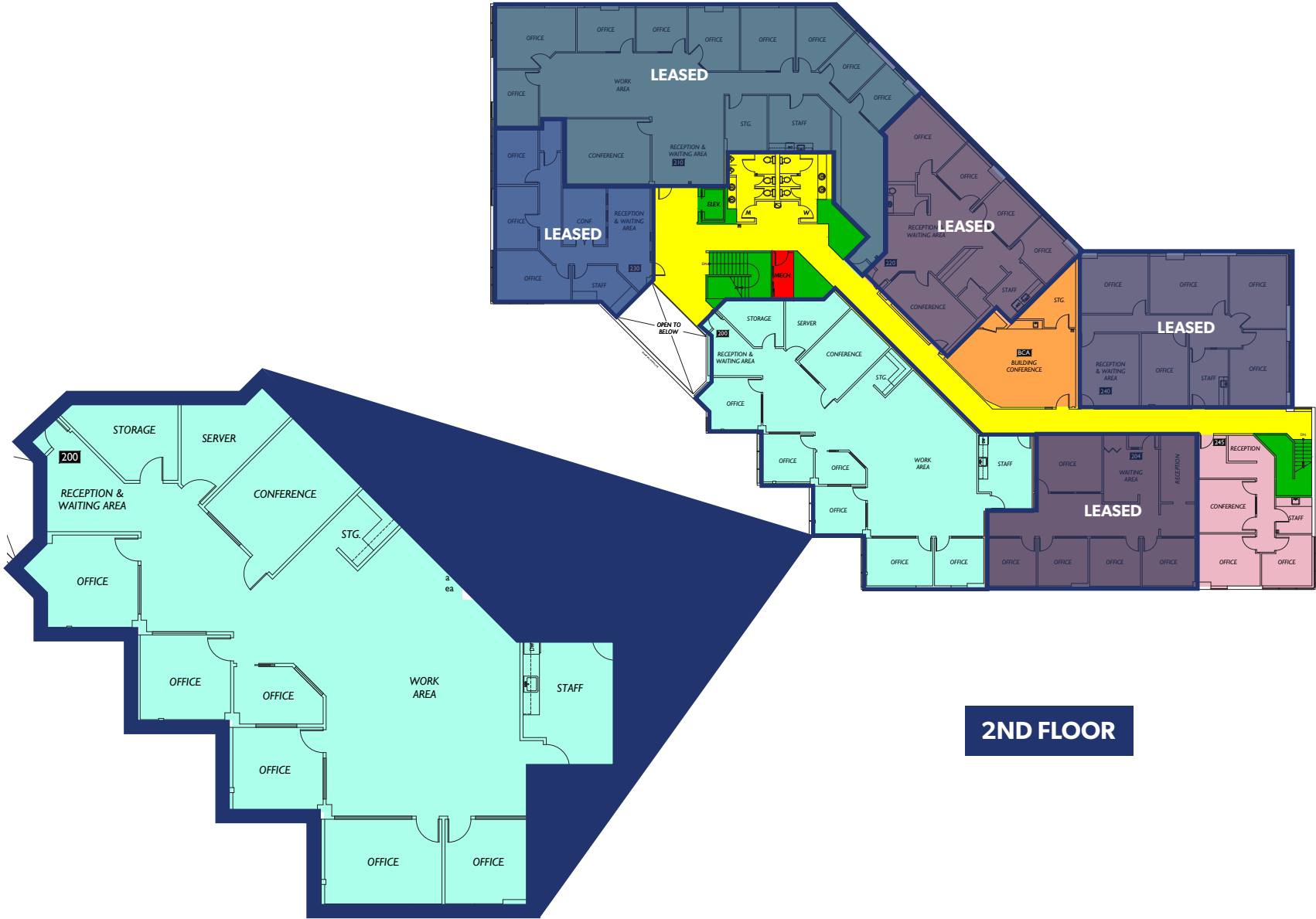
1ST FLOOR

# RUSSELL PLAZA

33600 6th Ave South  
Federal Way, WA

SUITE 200 | 3,697 SF TOTAL

AVAILABLE NOW

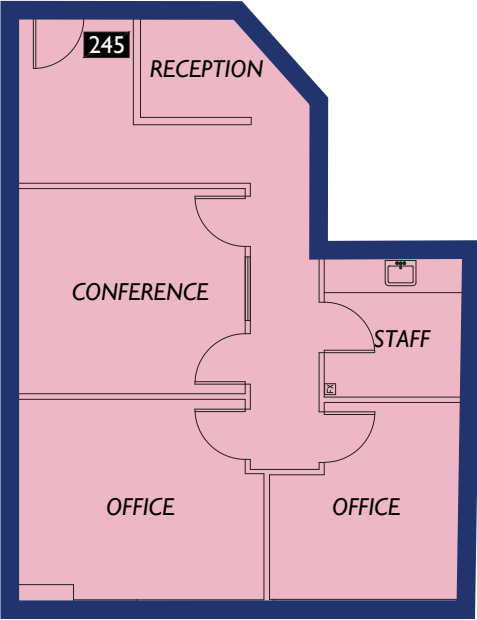
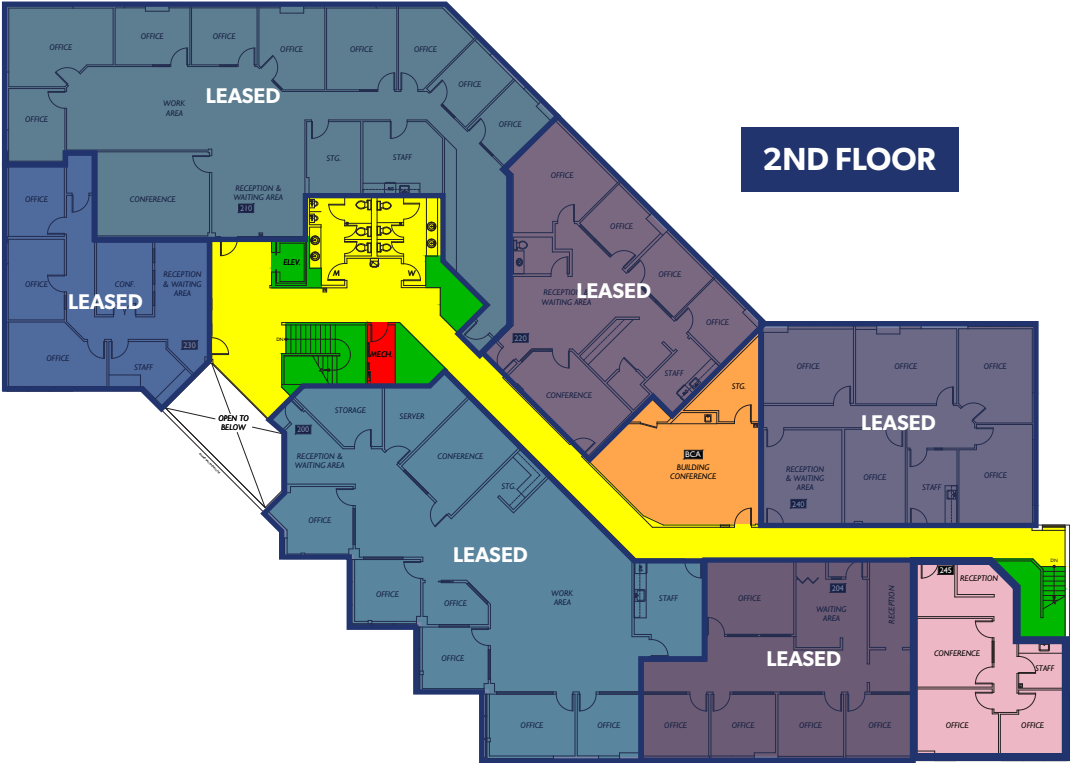


# RUSSELL PLAZA

33600 6th Ave South  
Federal Way, WA

SUITE 245 | 987 SF TOTAL

AVAILABLE NOW





# PHOTOS



The information contained herein has been obtained from reliable sources, but is not guaranteed. A prospective buyer/tenant should verify each item relating to this property and all information contained herein.

**SHANE MAHVI, SIOR**  
(206) 336-5338  
smahvi@andoverco.com

**BRIAN BRUININKS, CCIM**  
(206) 336-5324  
bbruininks@andoverco.com

