

# North Valley Business Park

16,809 SF Available



## 17680 W Valley Hwy Tukwila, WA 98188

16,809 SF of office/warehouse

---

Approximately 2,187 SF of quality, air-conditioned office space

---

24' clear height warehouse ceiling

---

Dock high and grade level loading

---

Prime location on W Valley Hwy with convenient access to Hwy-167  
and I-405/I-5 interchange

---

Asking rate: \$1.15 Shell/\$1.30 Office

The information contained herein has been obtained from reliable sources, but is not guaranteed. A prospective buyer/tenant should verify each item relating to this property and all information contained herein.

## Contact

**GEORGE ROCKWELL, SIOR**  
(206) 679-7625  
[grockwell@andoverco.com](mailto:grockwell@andoverco.com)

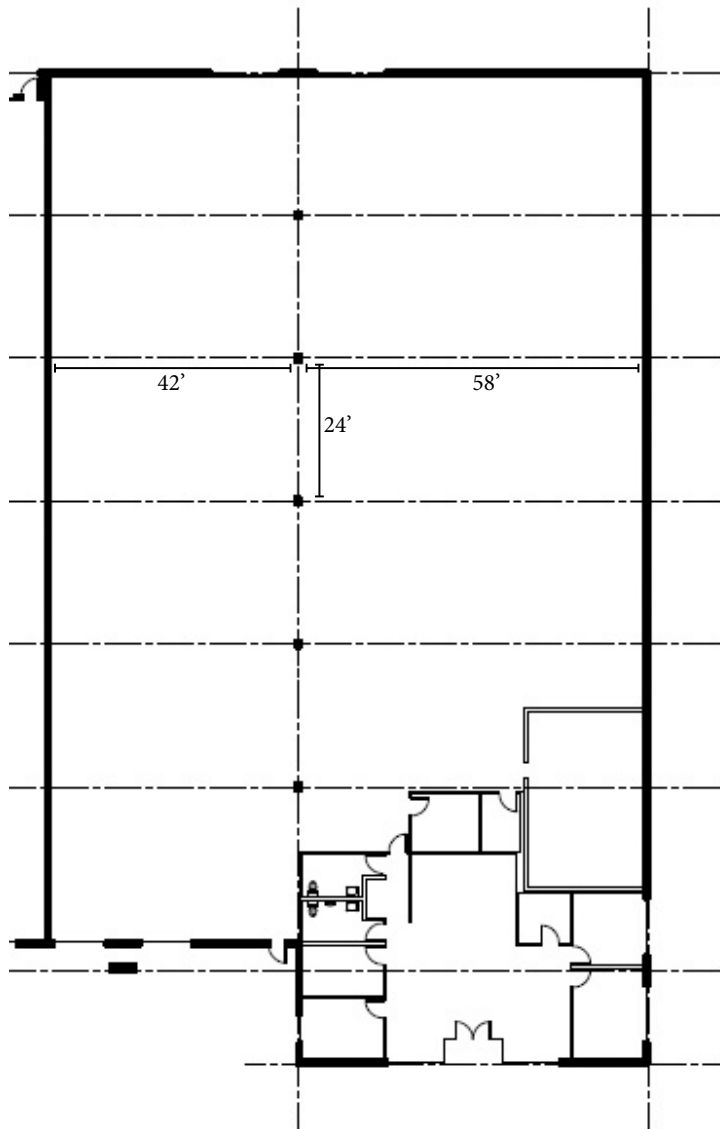


**THE ANDOVER  
COMPANY, INC.**

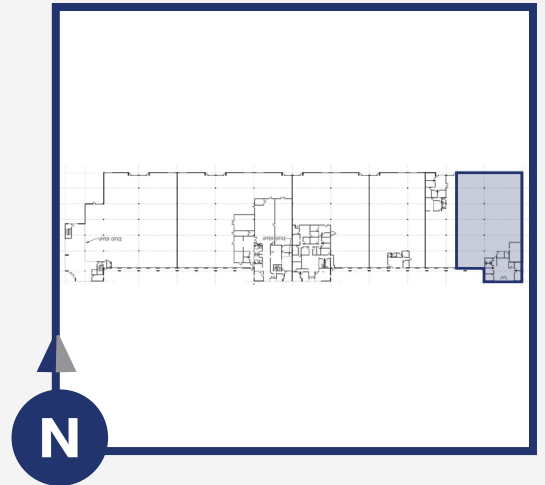
**CORFAC INTERNATIONAL**



# Suite 17680



**±2,187 SF OFFICE**  
**±14,622 SF WAREHOUSE**  
**±16,809 SF TOTAL**



Suite: **17680**  
**17680 W VALLEY HWY**  
**TUKWILA, WA 98188**

Total SF: **16,809 SF**  
Rates: **\$1.15 SHELL/\$1.30 OFFICE**

## Contact

**GEORGE ROCKWELL, SIOR**  
(206) 679-7625  
[grockwell@andoverco.com](mailto:grockwell@andoverco.com)



The information contained herein has been obtained from reliable sources, but is not guaranteed. A prospective buyer/tenant should verify each item relating to this property and all information contained herein.