

PARK 76

22437 76TH AVE S | KENT, WA

FOR LEASE

10,150 SF



**THE ANDOVER
COMPANY, INC.**

CORFAC INTERNATIONAL

DAVE DUNN, CCIM | VICE PRESIDENT

206.336.5326

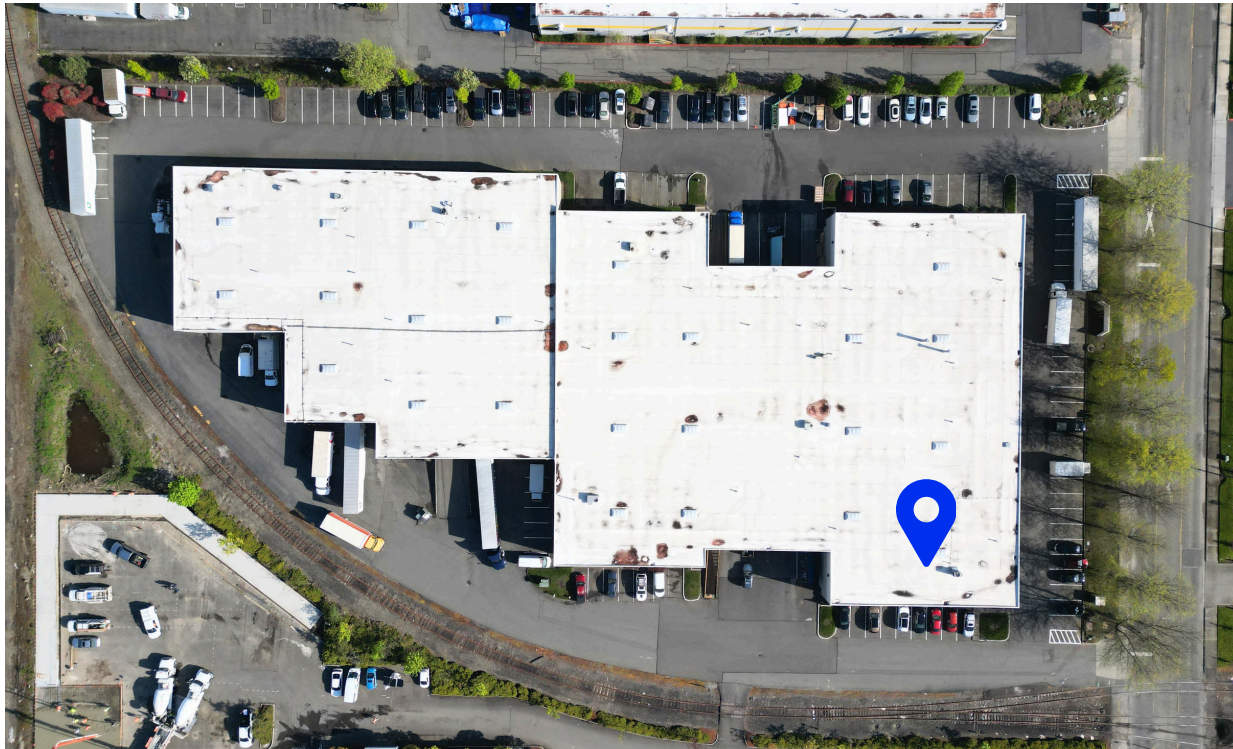
ddunn@andoverco.com

SHANE MAHVI, SIOR | PRINCIPAL

206.336.5338

smahvi@andoverco.com

The information contained herein was obtained from sources believed reliable; however, The Andover Company, Inc. makes no guarantees, warranties or representations as to the completeness or accuracy thereof. The presentation of this property is submitted subject to errors, omissions, change of price or conditions, prior to sale or lease, or withdrawal without notice.



PARK 76

22437 76TH AVE S | KENT, WA

PROPERTY HIGHLIGHTS

- 10,150 SF TOTAL
- 1,100 SF OFFICE
- 3 DOCK HIGH DOORS
- 20' CLEAR HEIGHT
- FULLY SPRINKLERED
- ABOVE STANDARD POWER
- M-3 ZONING, CITY OF KENT
- AVAILABLE DECEMBER 1, 2026
- PLEASE CONTACT BROKERS FOR RATES

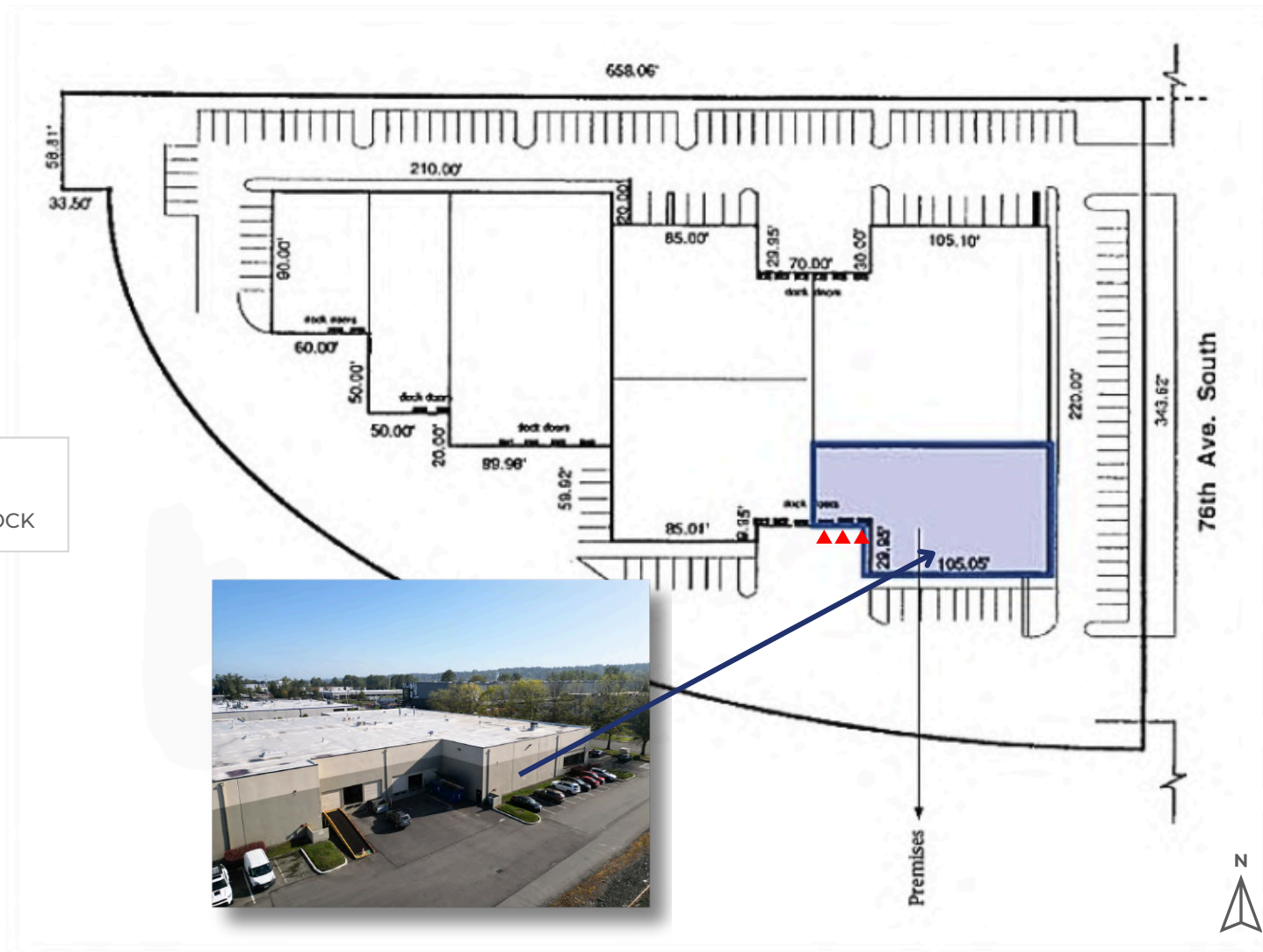


22437 76TH AVE S | KENT, WA

SITE PLAN

PARK 76

22437 76TH AVE S | KENT, WA



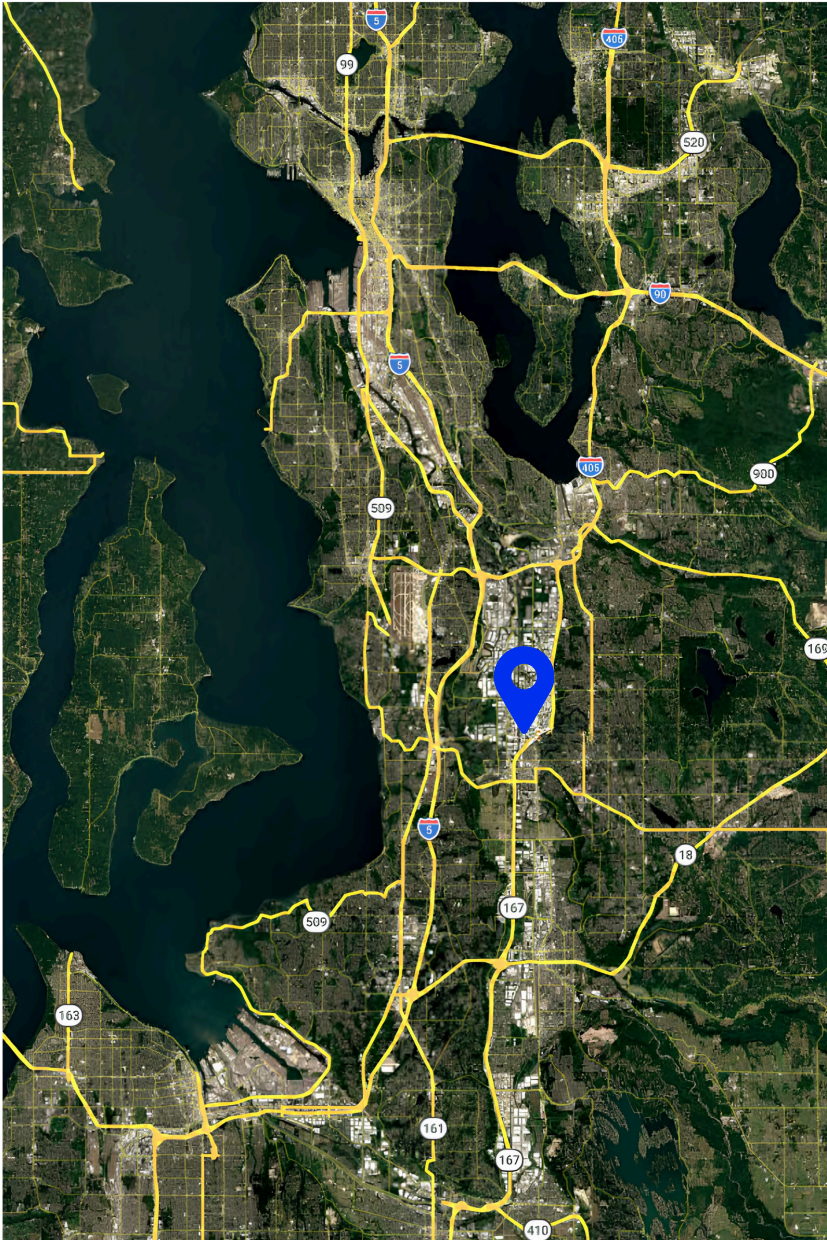
KEY
▲ LOADING DOCK



LOCATION PROXIMITY

PARK 76

22437 76TH AVE S | KENT, WA



- SR-167 (Valley Freeway) – 1 mile
- West Valley Hwy – 1.5 miles
- I-5 – 3.5 miles
- Kent (Downtown) – 3 miles
- SR-516 – 2.5 miles
- Tukwila – 5 miles
- Sea-Tac Airport – 6 miles
- I-405 – 6.5 miles
- Tacoma – 18 miles
- Seattle (Downtown) – 20 miles

22437 76TH AVE S | KENT, WA

PARK 76

22437 76TH AVE S | KENT, WA

DAVE DUNN, CCIM | VICE PRESIDENT

206.336.5326

ddunn@andoverco.com

SHANE MAHVI, SIOR | PRINCIPAL

206.336.5338

smahvi@andoverco.com

**THE ANDOVER
COMPANY, INC.**

CORFAC INTERNATIONAL