

WEST PARK

CORPORATE CAMPUS

FOR SUBLEASE

3402 W VALLEY HWY N | C100 | AUBURN, WA | 15,559 SF



DOCK HIGH WAREHOUSE & OFFICE SPACE

 THE ANDOVER
COMPANY, INC.
CORFAC INTERNATIONAL


Schnitzer
PROPERTIES

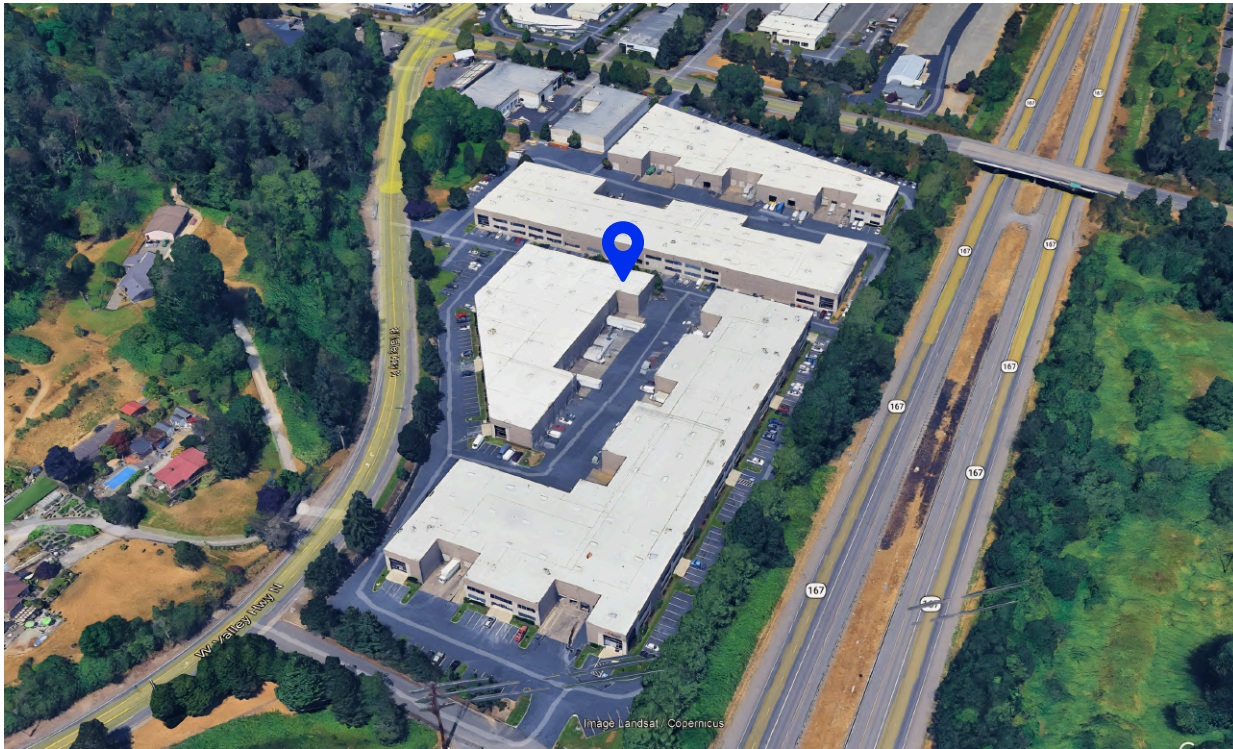
EXCLUSIVELY OFFERED BY:

ARNE SVENDSEN

206.947.2885

ASVENDSEN@ANDOVERCO.COM

The information contained herein was obtained from sources believed reliable; however, The Andover Company, Inc. makes no guarantees, warranties or representations as to the completeness or accuracy thereof. The presentation of this property is submitted subject to errors, omissions, change of price or conditions, prior to sale or lease, or withdrawal without notice.



WEST PARK

CORPORATE CAMPUS

PROPERTY HIGHLIGHTS

- 15,559 SF Total
- 1,177 SF Office
- 2 Dock-High Doors (1 pit leveler)
- 1 Oversized Grade-Level Door
- 3-Phase Power
- 30' Clear Height
- Excellent Office Layout
- Sprinklered
- Highway 167 Frontage
- Class A Image
- Easy Access to I-5, SR-18 & Hwy-167
- Built in 2000
- Sublease Through 7/31/28
- Contact Brokers for Rates



3402 W VALLEY HWY N | AUBURN, WA

SITE PLAN

WEST PARK

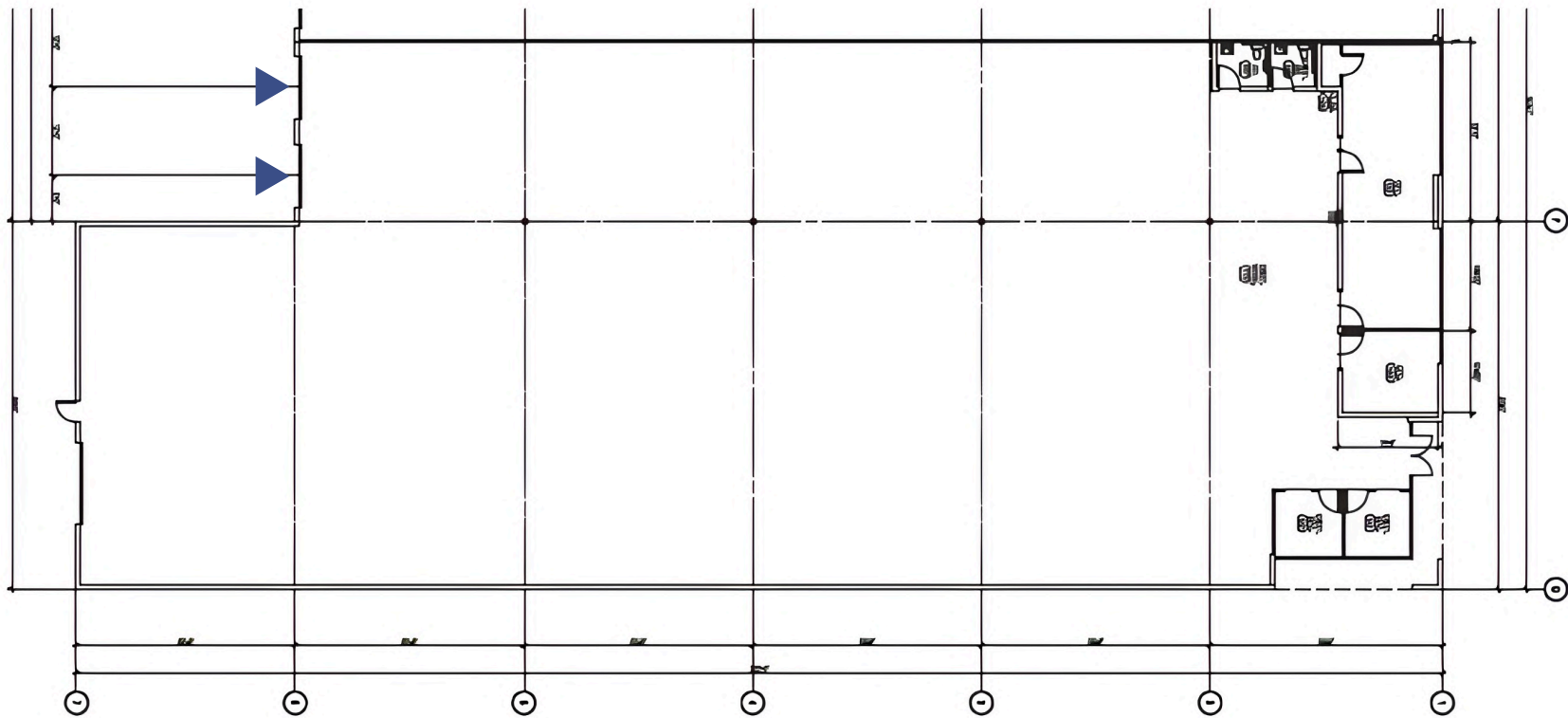
CORPORATE CAMPUS



FLOOR PLAN

WEST PARK

CORPORATE CAMPUS



▶ Dock High Door