

**EXCEPTIONAL
OFFICE SPACE IN
FEDERAL WAY**

FOR LEASE

**MULTIPLE SPACES &
CONFIGURATIONS**



9TH AVENUE PAVILION

33434 8TH AVENUE SOUTH | FEDERAL WAY, WA 98003

MIKE HEMPHILL

(206) 550-4176

mhemphill@andoverco.com

SHANE MAHVI, SIOR

(858) 442-0441

smahvi@andoverco.com

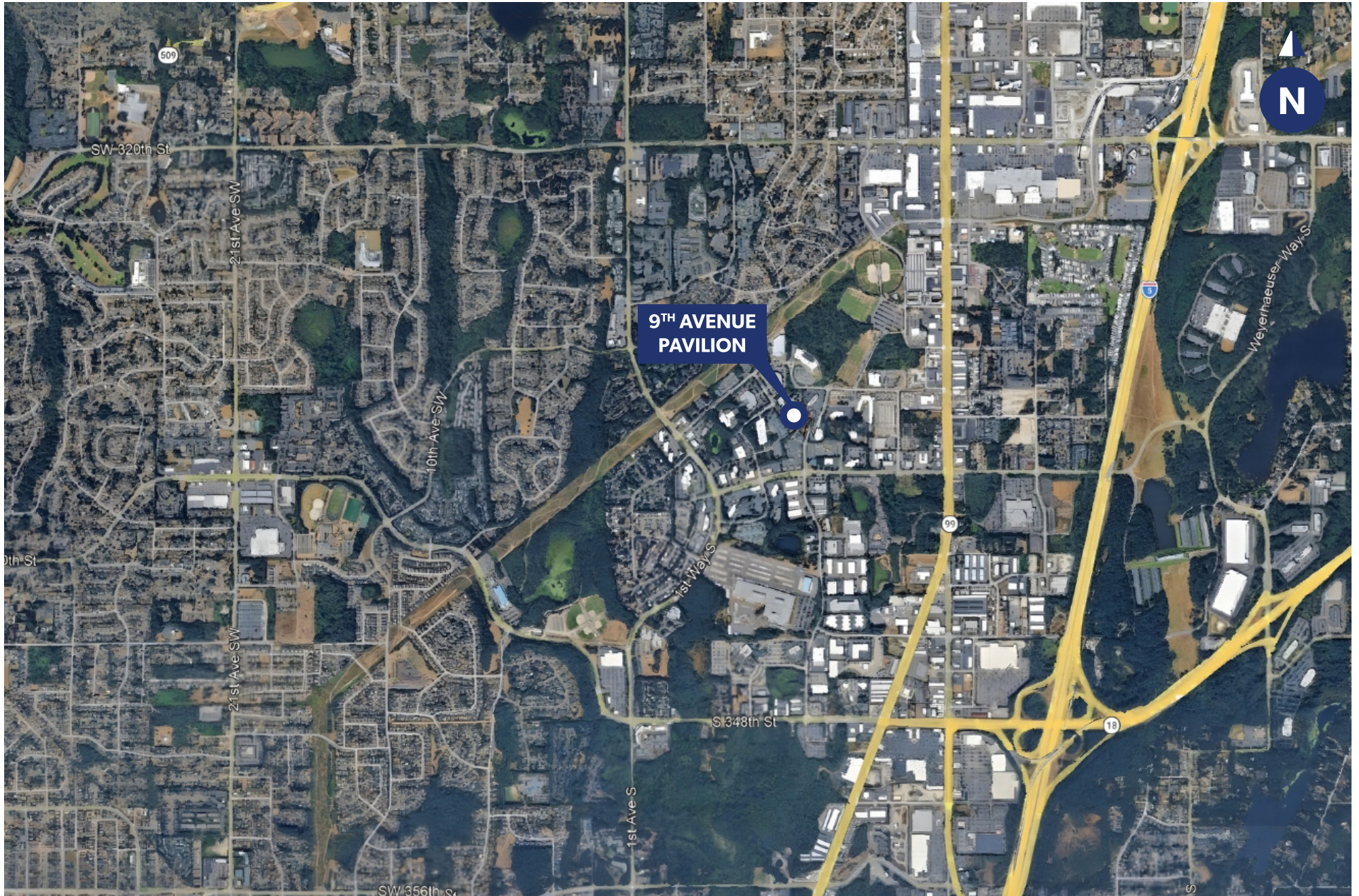


**THE ANDOVER
COMPANY, INC.**

CORFAC INTERNATIONAL



LOCATION MAP





PRESTIGIOUS CORPORATE IMAGE WITH A SUPERB LOBBY THAT FEATURES A GLASS ATRIUM



FLOOR TO CEILING WINDOWS THROUGHOUT PROVIDES ABUNDANT NATURAL DAYLIGHT



UNIQUE SUITES WITH OUTSIDE PATIOS AND MOUNT RAINER VIEWS



STATE-OF-THE-ART TELECOMMUNICATION WITH COMCAST BUSINESS SERVICE OR CENTURYLINK



COMPLETELY RENOVATED LOBBY, COMMON AREAS, AND RESTROOMS



MINUTES AWAY FROM SHOPPING AND AMENITIES AT FEDERAL WAY COMMONS



CLOSE PROXIMITY TO METRO TRANSIT STOPS



AMPLE PARKING RATIO OF 3.2 STALLS PER 1,000 SF OF BUILDING AREA



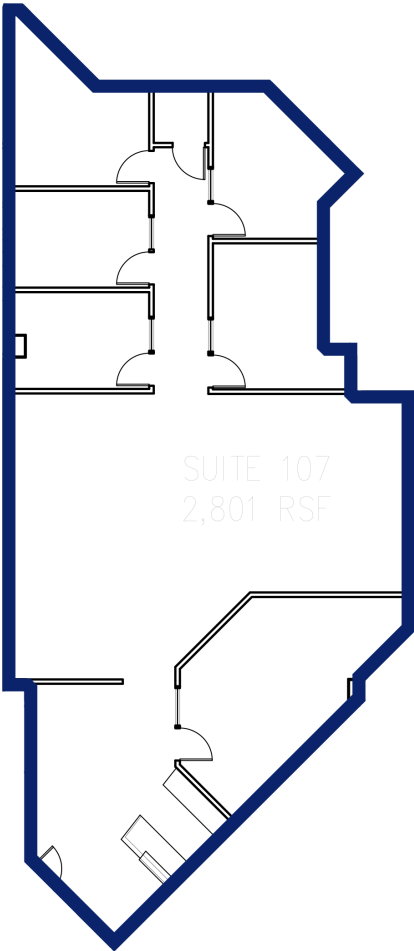
AVAILABLE SPACES

FLOOR/SUITE	RENTABLE SF	RENTAL RATE/RSF	COMMENTS
1 st Floor - Suites 106 + 107	5,832 RSF	\$27.50/SF Full Service	<ul style="list-style-type: none"> • Reception area • Twelve (12) Private Offices • Open Work Area • Conference Rooms • Breakroom • Furniture Can Be Made Available • Available now
1 st Floor - Suite 107	3,717 RSF	\$27.50/SF Full Service	<ul style="list-style-type: none"> • Reception area • Five (5) Private Offices • Open Work Area • Breakroom • Furniture Can Be Made Available • Available now
1 st Floor - Suite 106	2,115 RSF	\$27.50/SF Full Service	<ul style="list-style-type: none"> • Six (6) Private Offices • Open Work Area • Break Area • Available now

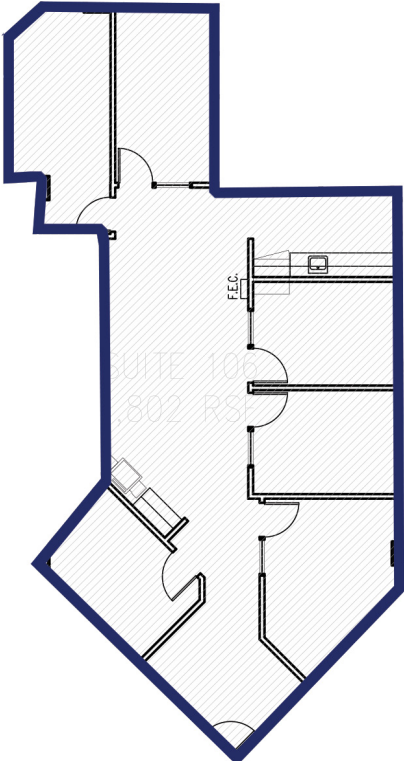


AVAILABLE SPACES

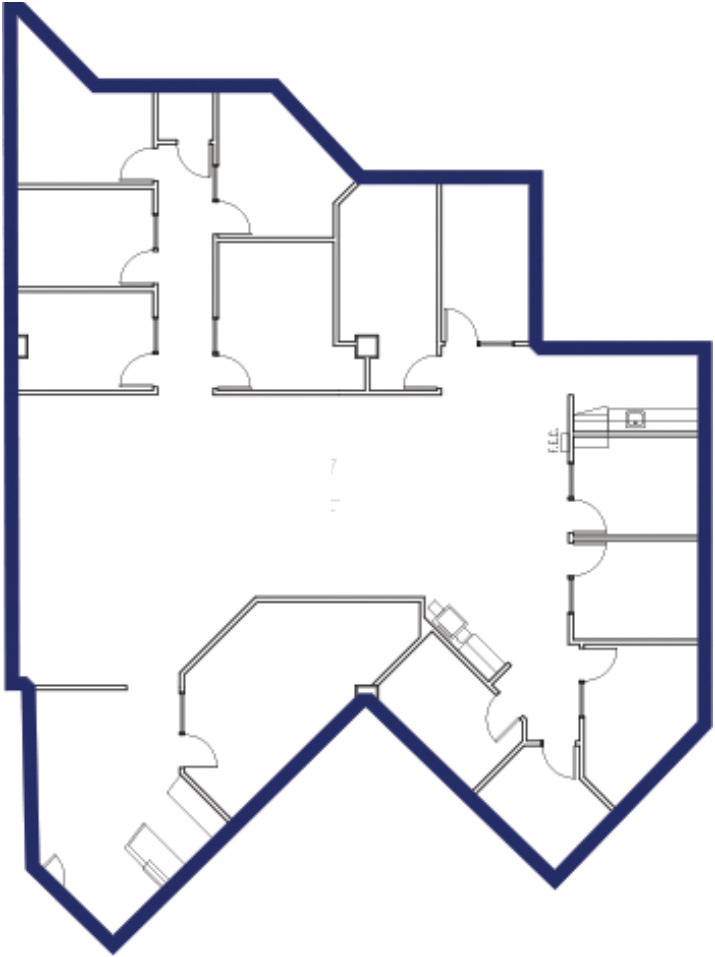
Suite 107: **3,717 RSF**



Suite 106: **2,115 RSF**



Suites 106 + 107: **5,832RSF**





SITE PLAN

