

# KENT WEST

CORPORATE PARK

# FOR LEASE

21929 67<sup>TH</sup> AVE SOUTH | BLDG D | KENT, WA



**45,864 SF DISTRIBUTION SPACE**  
AVAILABLE NOVEMBER 1, 2026



**BRIAN BRUININKS, CCIM**  
206-336-5324  
bbruininks@andoverco.com

**SHANE MAHVI, SIOR**  
206-336-5338  
smahvi@andoverco.com

The information contained herein was obtained from sources believed reliable; however, The Andover Company, Inc. makes no guarantees, warranties or representations as to the completeness or accuracy thereof. The presentation of this property is submitted subject to errors, omissions, change of price or conditions, prior to sale or lease, or withdrawal without notice.



# KENT WEST

## CORPORATE PARK

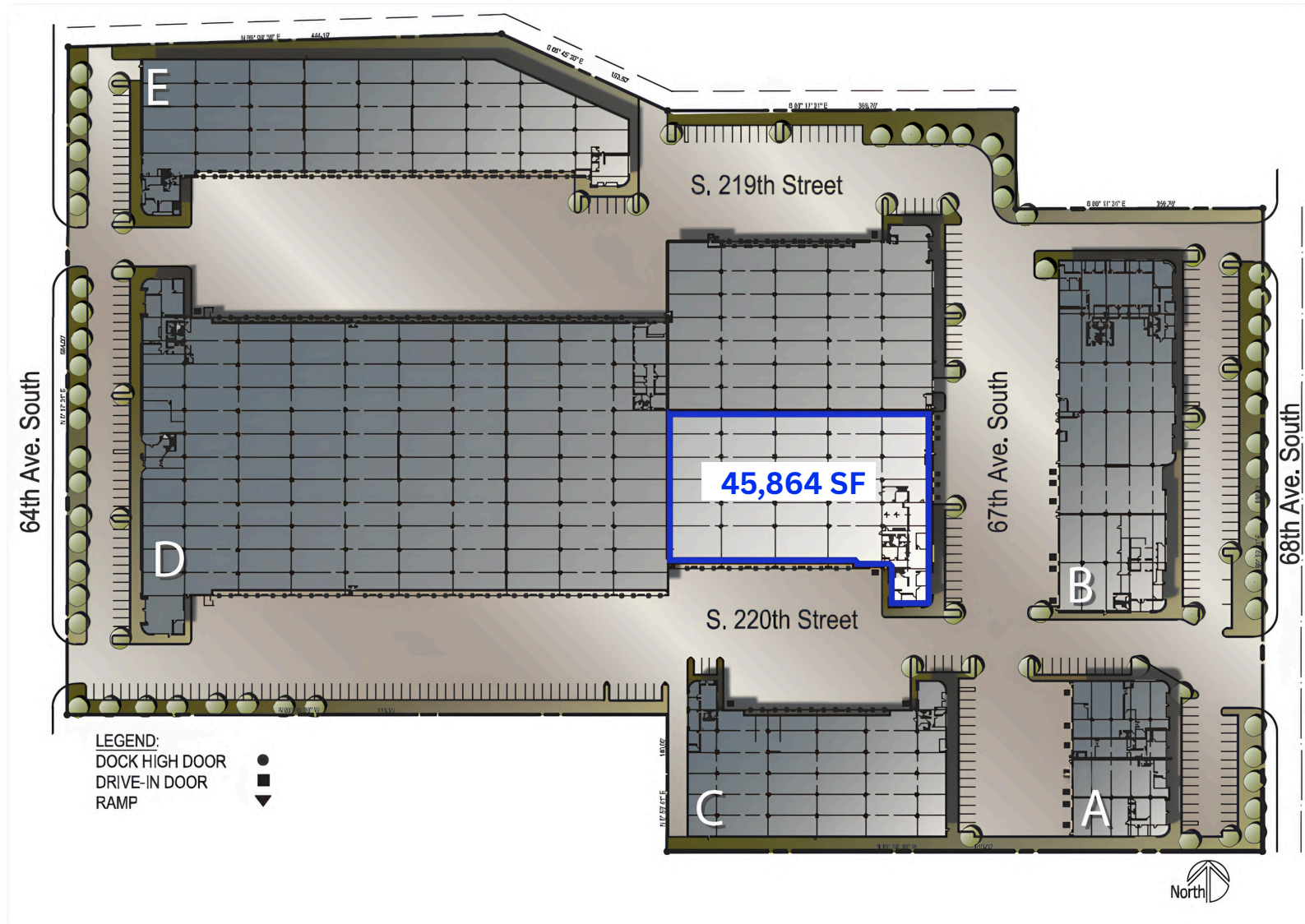
### BLDG D HIGHLIGHTS

- 45,864 SF Total
- 5,588 SF First Floor Office
- 2,378 SF Second Floor Office
- 3,088 SF Second Floor Unfurnished Mezzanine
- 13 Dock High Doors
- 1 Ramp Door (12' x 14')
- 24' Clear Height
- 6 Pony Docks on East Side
- Zoning I-1
- Easy Access to I-5, SR-18 & Hwy-167
- **Available November 1, 2026**
- Contact Brokers for Rates

# SITE PLAN

Property sits in Kent West Corporate Park (±250,000 SF industrial building) with direct West Valley Hwy frontage and strong freeway access.

# KENT WEST CORPORATE PARK

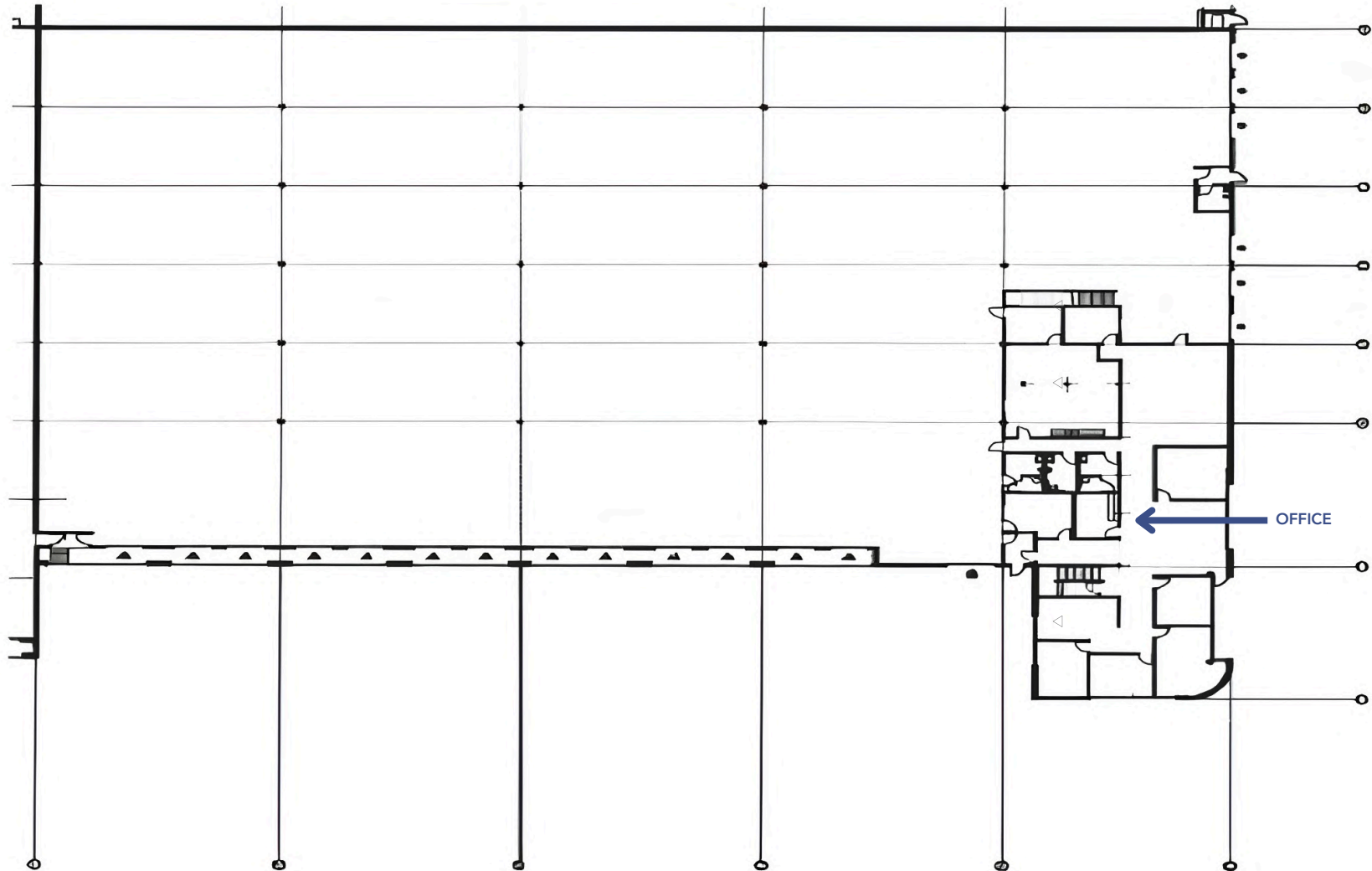


# FLOOR PLAN

1ST FLOOR | 5,588 SF OFFICE

# KENT WEST

CORPORATE PARK

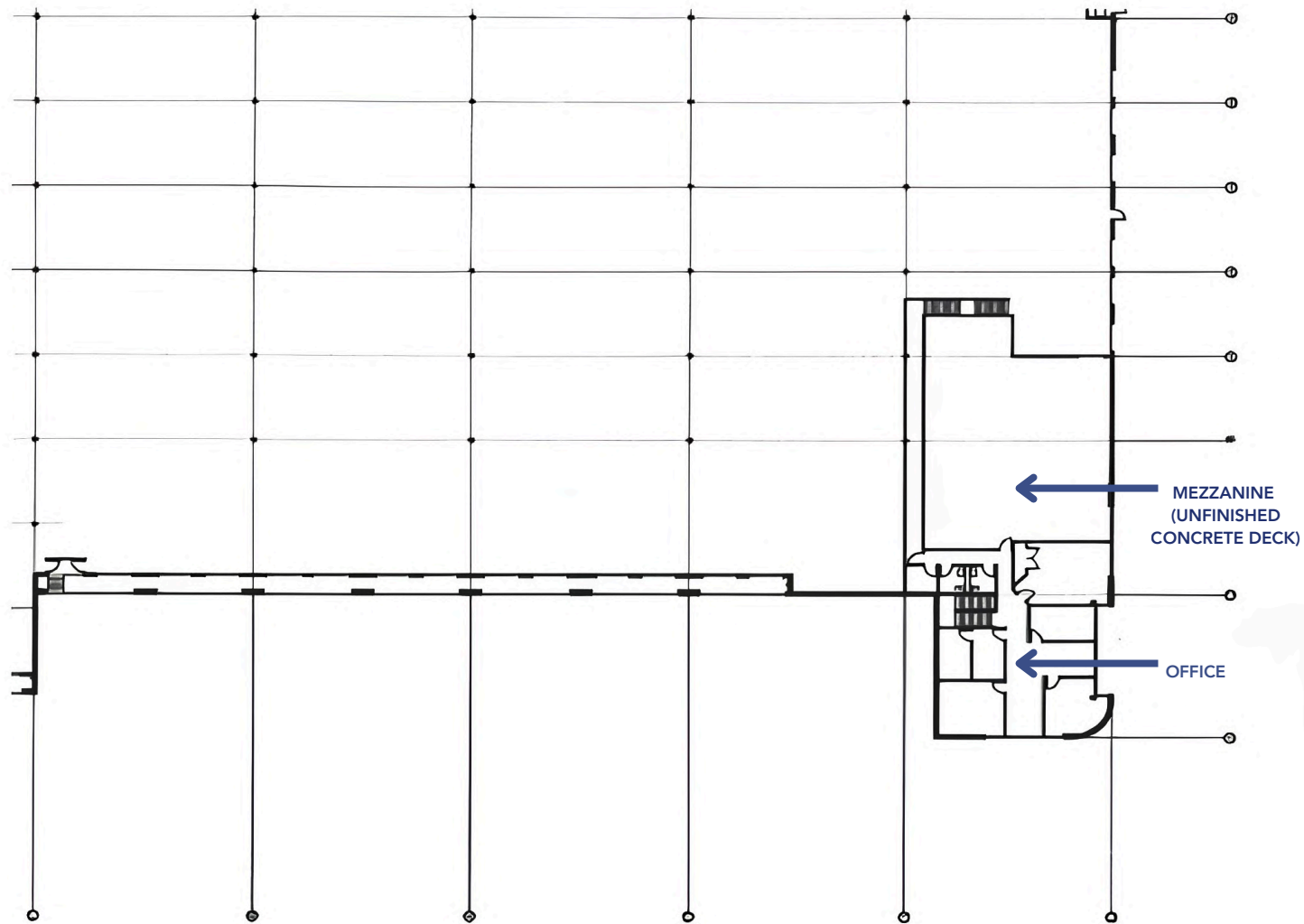


# FLOOR PLAN

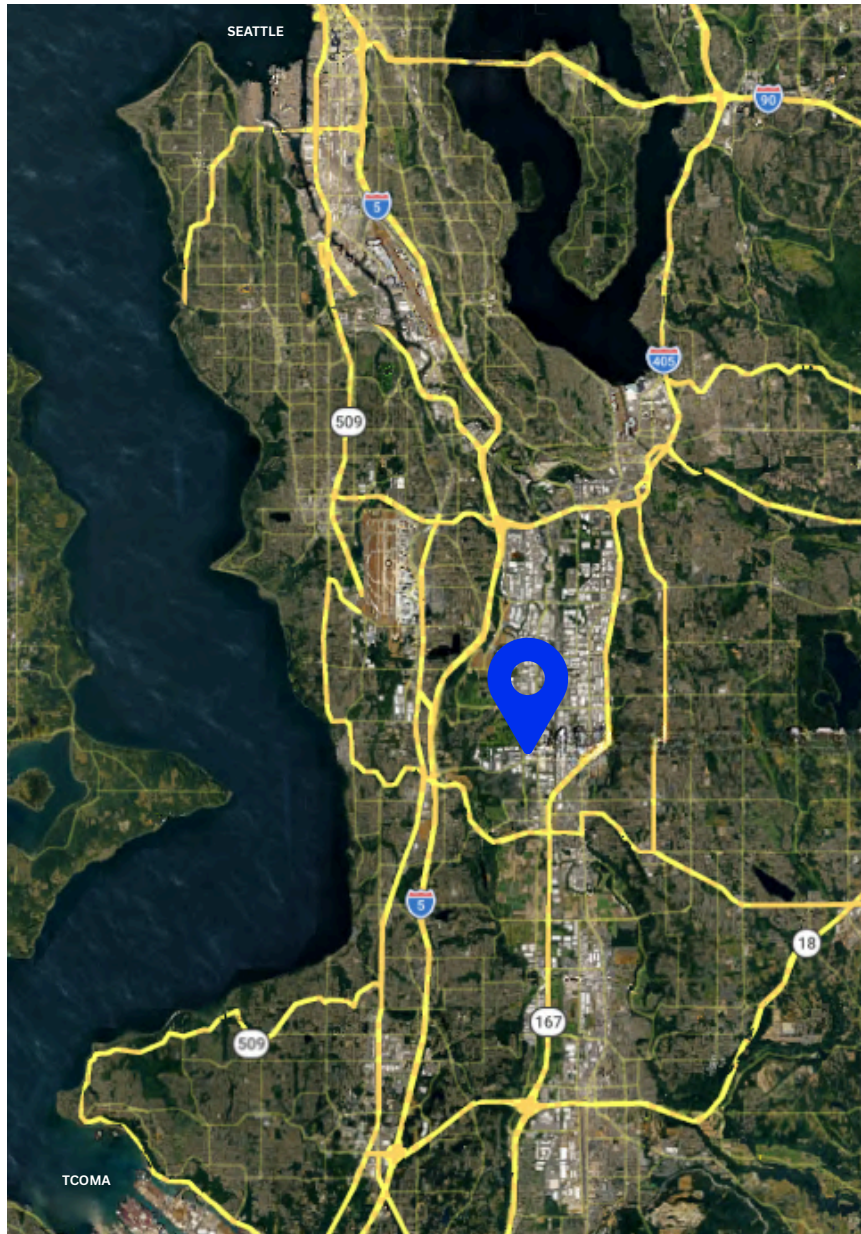
2ND FLOOR | 3,088 SF MEZZANINE | 2,378 SF OFFICE

# KENT WEST

CORPORATE PARK



## LOCATION PROXIMITY



# KENT WEST

## CORPORATE PARK

- SR-167 (Valley Freeway) – 1 mile
- West Valley Hwy – 0.5 mile
- I-5 – 3.5 miles
- Kent (Downtown) – 3 miles
- SR-516 – 2.5 miles
- Tukwila – 5 miles
- Sea-Tac Airport – 6 miles
- I-405 – 6.5 miles
- Tacoma – 18 miles
- Seattle (Downtown) – 20 miles

# **KENT WEST**

CORPORATE PARK

---

**BRIAN BRUININKS, CCIM**  
206-336-5324  
bbruininks@andoverco.com

**SHANE MAHVI, SIOR**  
206-336-5338  
smahvi@andoverco.com



**THE ANDOVER  
COMPANY, INC.**

---

**CORFAC INTERNATIONAL**